

# Packshed Design for our Small & Growing Orchard





# 2003 Farm Plan

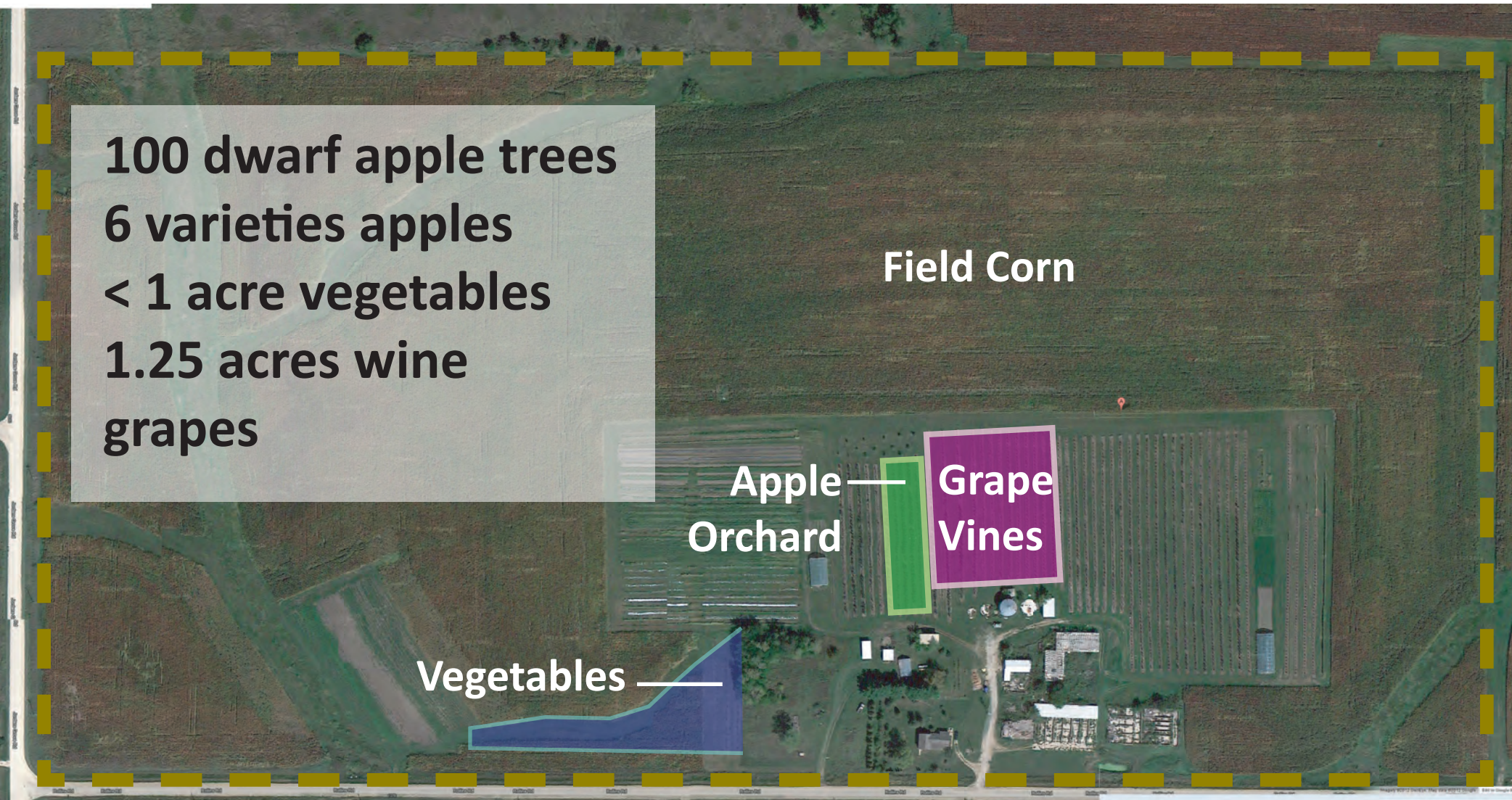
100 dwarf apple trees  
6 varieties apples  
< 1 acre vegetables  
1.25 acres wine  
grapes

Field Corn

Apple  
Orchard

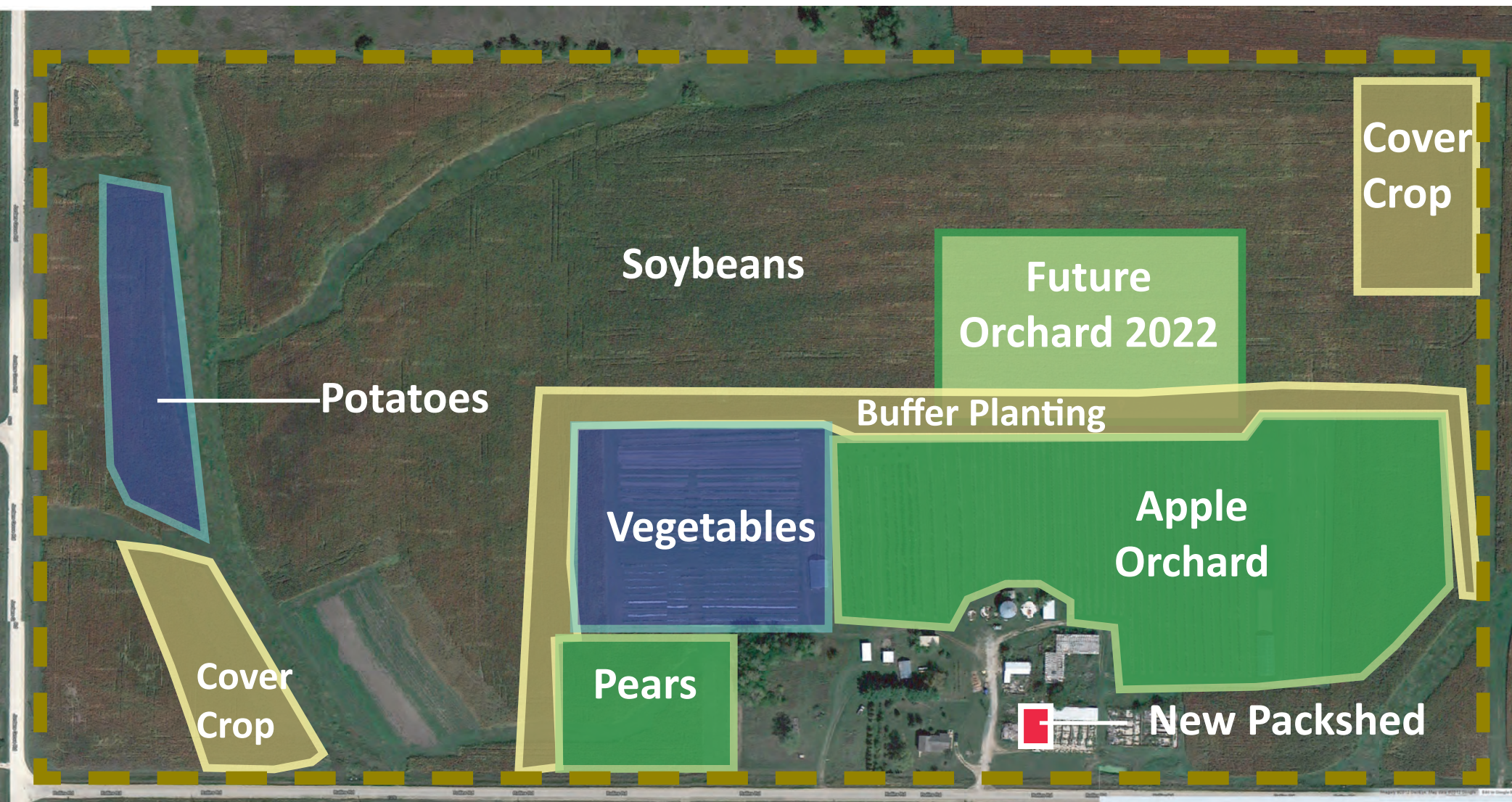
Grape  
Vines

Vegetables





# Farm Plan 2019







# Current Situation

**12+ acres apple trees (4,200 trees)**

**2+ acres pear trees (360 trees)**

**4 acres vegetables**

**5 acres in cover crop**

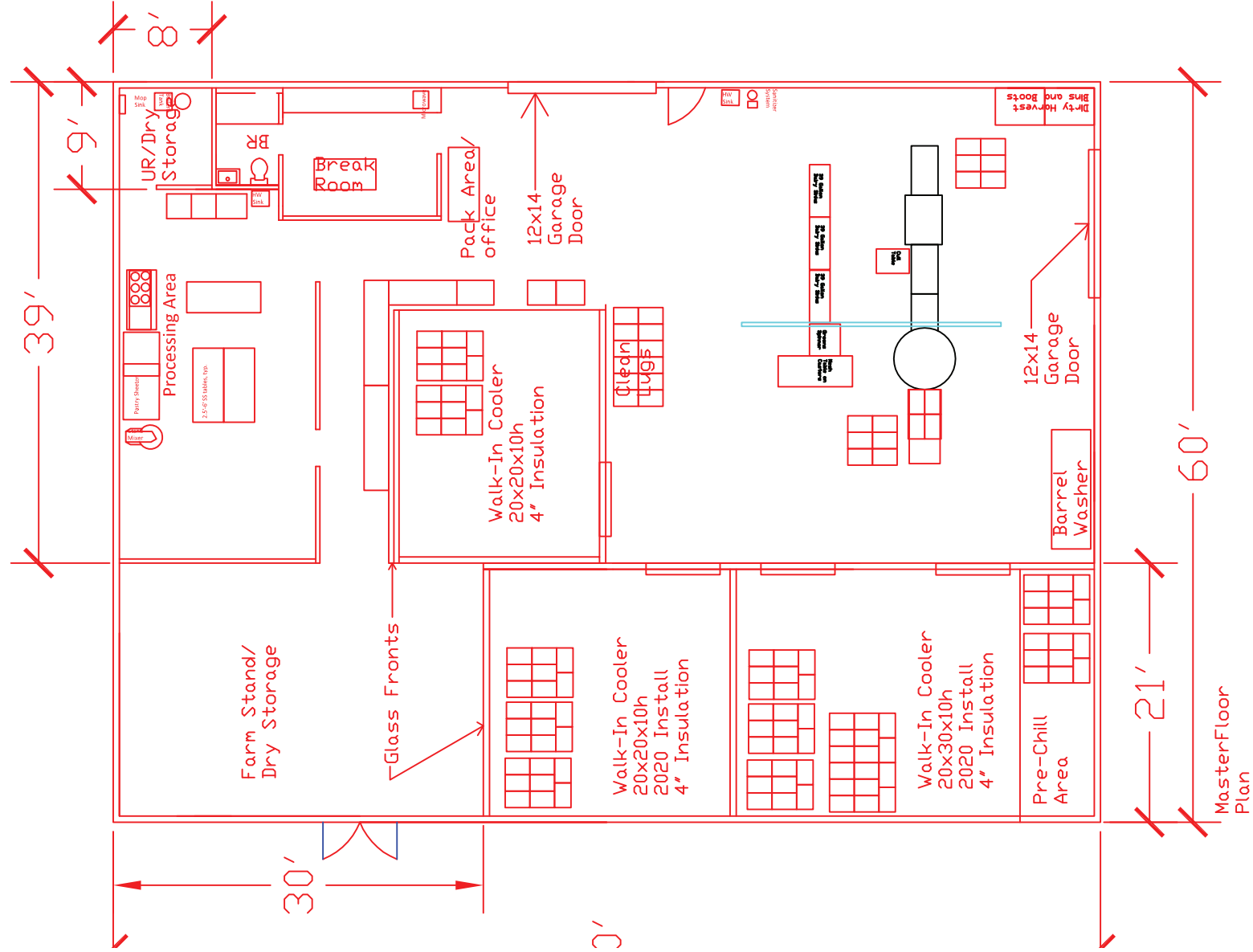
**45 acres in row crop (corn/beans)**

**2 moveable hoophouses**

**1 greenhouse**



# New Building (2018-2019)





# New Building Construction





# New Building Construction





# Packing Area





# Apple Packing Line





# Root Veggie Packing Line





# Farm Store & Process Area





# Apple Processing Area









# Farm Store







Garlic  
\$1.25 / bulb

Red Ace Beets  
\$3.00 / Bowl +  
Pound  
Organic Spray Only

Potatoes  
\$3 /  
Bowl  
Organic spray only

Carrots  
\$2.50 / lb.

↑ 50¢

Apple Chips  
\$4.50 / bag  
or  
2 for \$8  
made with apples from our farm



