

Our Farm

*Lesson's Learned & Available
Resources*

Resources Available:

NRCS Representatives (Pheasants Forever)

Private Lands Wildlife Biologist

District Forester

Soil Scientist

We get what we manage for!

Do nothing and you may get this, sooner than you think.



You may also want:



With an end goal of this

Summer



Winter



*If You Have Timber,
Contact Your District Forester!*



District Forester may recommend:

Selective Harvest



Timber Stand Improvement



*Timber can be a **Cash Crop**!*



Less Invasive Practices

Stump Grinding



Top Soil Remains



Terracing

Using a Moldboard Plow



***Tested to a 6 inch/hr rain at 2%
grade***



Can be seeded immediately



*Overgrown pastures can be renovated
with brush management techniques*



Maybe even add a Pollinator strip next to a drainage!



Planning is the Key!

Conducting a prescribed burn on pastures in early March, sets back small woody stock!



Recommend a minimum of two chemical burn downs prior to drilling warm season grasses or Pollinator mixes



Prescribed Burning works in Warm Season Grass & Pollinator Mixes

Grasses in the spring



Flowers in the Fall

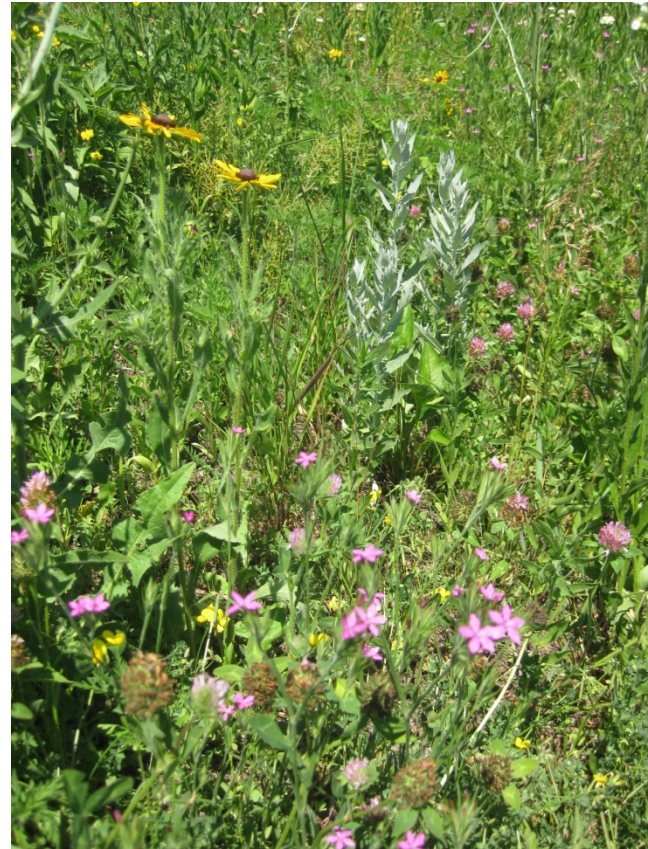


Results from a prescribed burn!

Prairie Partners CP-29



EQIP Pollinators



*Shrubs
grow fast
& provide
cover,
screening,
food &
more!*



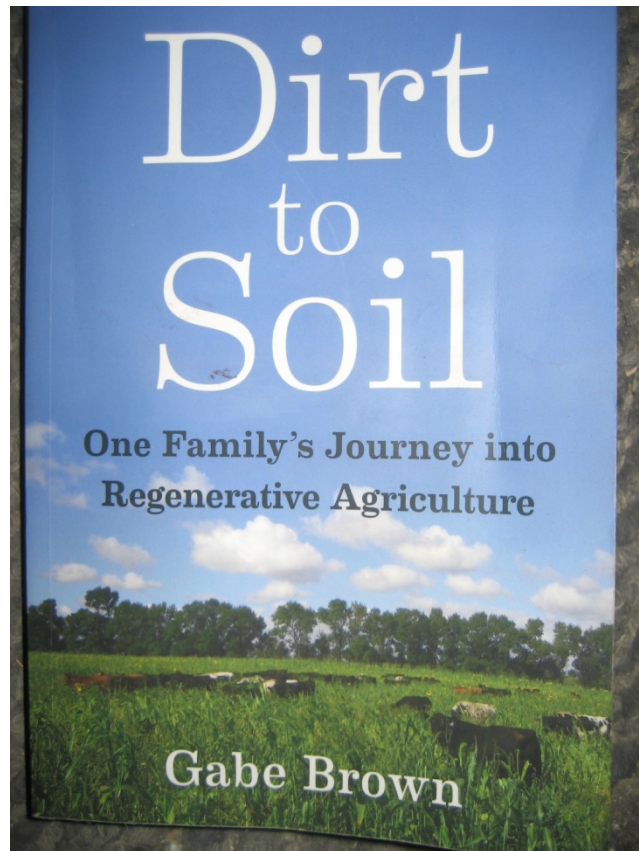
Where there is Light, there is Life!

Edge feathering provides instant food
& cover



Planning on Planting? See your Soil Scientist

Also recommend:



Ask about Soil Health



Inquire about seed blends & Cover Crops



Remember, we get what we manage for:

*The School of Hard Knocks is
tough!*



Assistance is available!



*Resources Available:
All are just a phone call away*

*NRCS Representatives (Pheasants Forever)
Private Lands Wildlife Biologist
District Forester
Soil Scientist*