



JAN 18-20, 2018

REVIVAL

PROGRAM

PRACTICAL FARMERS OF IOWA
ANNUAL CONFERENCE

WELCOME

2018

REVIVAL

JAN 18-20

PRACTICAL FARMERS OF IOWA ANNUAL CONFERENCE

THANK YOU
TO OUR A-LEVEL SPONSORS

PROGRAM CONTENTS

Conference Schedule Overview	pg. 3
Welcome	pg. 4
Volunteers, Staff & Board	pg. 5
Sessions-at-a-Glance	pg. 6-7
Map of Scheman Center	pg. 8
Sponsor & Exhibitor List & Contacts	pg. 9-13
Sponsor & Exhibitor Key & Location Map	pg. 14-15
Friday Sessions-at-a-Glance	pg. 16
Friday Session Descriptions	pg. 17-19
PFI Annual Update; Award Presentation	pg. 20
Keynote Address Details	pg. 21
PFI Potluck Details & Directions	pg. 22
Food at the Conference	pg. 23
Saturday Sessions-at-a-Glance	pg. 24-25
Saturday Sessions Descriptions	pg. 26-32
Blank Pages for Notes	pg. 33-35

WEB & SOCIAL MEDIA

Looking to get online? Free wifi is available throughout Scheman on Iowa State University's guest wireless network. If you need assistance, ask at the registration desk.

Share the experience! Use **#PFI18** to post social media updates on your favorite social media site. Let's get a conversation going!

CERTIFIED CROP ADVISORS: CEU CREDITS

Earn CEU credits: We are excited to offer continuing education credits (CEUs) at several sessions this year. Earn CEUs in all four categories (nutrient management; soil & water management; crop management; and integrated pest management). Eligible sessions are noted throughout this program book.



ALBERT LEA
SEED



IOWA STATE UNIVERSITY
Department of Agronomy



ODDS & ENDS

Please fill out your conference evaluation. Your feedback is important to us! We read each evaluation we receive, so tell us what you think! You can turn your form in at the registration desk, or give it to a staff member at your last session.

Return name tags. We recycle tags and reuse holders. Please help us conserve by returning your name tag to the registration desk.

SCHEDULE OVERVIEW

FRIDAY JANUARY 19

11 a.m. – EXHIBIT HALL OPENS – (1ST & 2ND FLOORS)

- See Sponsor Location key and map on pgs. 14-15
- Beverages available in the Exhibit Hall

11 a.m. – 12:30 p.m. – CONFERENCE REGISTRATION

12:30 p.m. – SILENT AUCTION OPENS (2ND FLOOR)

12:30 – 2 p.m. – SESSION 1

- See pg. 16 for locations, pgs. 17-18 for descriptions

2 – 3 p.m. BREAK to visit with sponsors in the Exhibit Hall

- See Sponsor Location key and map on pgs. 14-15
- Snacks available in the Exhibit Hall

3 – 4:30 p.m. – SESSION 2

- See pg. 16 for locations, pgs. 18-19 for descriptions

4:30 – 4:45 p.m. – BREAK to visit with sponsors in the Exhibit Hall

4:45 – 5:15 p.m. – ANNUAL BUSINESS MEETING

- Hear the latest on Practical Farmers programming, finances, staffing and more

5:15 – 5:30 p.m. – SUSTAINABLE AGRICULTURE ACHIEVEMENT AWARD PRESENTATION

- To: Earl Hafner, of Early Morning Harvest

5:30 – 6:30 p.m. KEYNOTE ADDRESS:

“An English Shepherd’s Vision to Revive Rural America”

- Learn more on pg. 20

7 – 11 p.m. – PFI POTLUCK PARTY!

- WHERE: CPMI Event Center • 2321 North Loop Drive
- See pg. 22 for directions

SATURDAY JANUARY 20

7:30 – 8:30 a.m. – REGISTRATION & BREAKFAST

- See breakfast food offerings on pg. 23

7:30 a.m. – EXHIBIT HALL OPENS – (1ST & 2ND FLOORS)

- See Sponsor Location key and map on pgs. 14-15
- Beverages available in the Exhibit Hall

8:30 – 9:40 a.m. – SESSION 1

- See pg. 24 for locations, pgs. 26-27 for descriptions

9:40 – 10 a.m. – BREAK

- Snacks available in the Exhibit Hall

10 – 11:10 a.m. – SESSION 2

- See pg. 24 for locations, pgs. 27-28 for descriptions

11:10 – 11:30 a.m. – BREAK

- Snacks available in the Exhibit Hall

11:30 a.m. – 1 p.m. – LUNCH & NETWORKING

- Featuring foods from PFI members

1 – 2:10 p.m. – SESSION 3

- See pg. 25 for locations, pgs. 28-29 for descriptions

2:10 – 2:30 p.m. – BREAK

- Snacks available in the Exhibit Hall

2:30 – 3:40 p.m. – SESSION 4

- See pg. 25 for locations, pgs. 29-31 for descriptions

3:40 – 4 p.m. – BREAK

- Snacks available in the Exhibit Hall
- Make final bids on silent auction items

4 p.m. – SILENT AUCTION CLOSES

- Must be present to win

4 – 5:10 p.m. – SESSION 5

- See pg. 25 for locations, pgs. 31-32 for descriptions

POTLUCK FOOD DROP OPTIONS

1

Drop off your food items at Scheman when you arrive for the conference. We will safely store and transport them for you. Look for a sign and table on the ground floor of Scheman. Volunteers will make sure your food items are labeled.

2

Self-Delivery: Bring your food items to the potluck yourself. *If you plan to attend, please bring a side dish to share and your own beverages!*

NEED LAST-MINUTE FOOD TO BRING?


Not to worry! You can pick up side dishes (no chips, please!) at one of these local establishments:

- Wheatsfield Cooperative – 413 Northwestern Ave.
- Hy-Vee – 640 Lincoln Way
- Fareway Grocery – 619 Burnett Ave.
- ALDI – 108 S 5th St.
- Pammel Grocery & Grill – 113 Colorado Ave.




WELCOME

THANK YOU FOR JOINING OUR REVIVAL!




WELCOME to Practical Farmers of Iowa's 2018 annual conference, "REVIVAL." Thank you for joining us – we are so glad you are here! We hope you learn a lot and make new acquaintances during this annual gathering.

At Practical Farmers, we believe that revival – of rural communities; of our soil, creeks and rivers; of opportunities for young people to set down roots where they grew up – is vital for agriculture, people and the land.



If we look back in recent history, Iowa's rural landscape was one with more people: families and children, farmers and townsfolk, people of diverse ages fueling rural economies. Rural residents have been moving to metro areas where there are more opportunities to make a living, meet friends and build community. Rural schools are consolidating, businesses are closing and our once thriving rural communities are losing their vibrancy.



This trend is not inevitable. Practical Farmers of Iowa has a different vision for the future – one where rural communities are repopulated with farmers and a rich tapestry of people; where our soils are regenerated thanks to living roots in the ground year-round, diverse crop rotations and livestock on the land; where our creeks and rivers are restored to health and all Iowans have clean water; and where opportunities abound for the next generation of farmers.

We have a lot of work to do – but with your help, we can make REVIVAL a reality across Iowa and beyond.





VOLUNTEERS, STAFF & BOARD



CONFERENCE VOLUNTEERS

Practical Farmers of Iowa Members

Deb Draper
Beth Grabau
Alice McGary
Santos Nunez
Scattergood Friends School
Jordan Scheibel

Julia Slocum
Dave Stevenson
Paula Stevenson

Other Volunteers

Ames Convention and Visitors Bureau
Jared Dressman

Erik Eastman
FoodCorps IA
Jaime Foxen
ISU Rodeo Club
Chris Stevenson

STAFF & CONSULTANTS

Conference Coordinator

Kathy Eastman

Staff

Erica Andorf
OFFICE MANAGER

Samantha Beckman
OFFICE SUPPORT

Debra Boekholder
MEMBERSHIP AND EVENTS ASSISTANT

Alisha Bower
MIDWEST COVER CROP ASSOCIATE

Sarah Carlson
MIDWEST COVER CROP DIRECTOR

Steve Carlson
BEGINNING FARMER AND PROGRAM ASSOCIATE

Henry Corbin
MULTIMEDIA ASSISTANT

Meghan Filbert
LIVESTOCK COORDINATOR

Laura Frescoln
PROGRAM DIRECTOR

Stefan Gailans
RESEARCH AND FIELD CROPS DIRECTOR

Suzi Howk
FINANCE AND BENEFITS MANAGER

Tamsyn Jones
OUTREACH AND PUBLICATIONS COORDINATOR

Liz Kolbe
HORTICULTURE COORDINATOR

Nick Ohde
RESEARCH AND MEDIA COORDINATOR

Greg Padget
BEGINNING FARMER MANAGER

Sally Worley
EXECUTIVE DIRECTOR

BOARD OF DIRECTORS

Founders

Larry Kallen
Dick Thompson
Sharon Thompson

Board

Nathan Anderson
DISTRICT 1 - NORTHWEST
Ann Franzenburg
SECRETARY; DISTRICT 3 - NORTHEAST

Tyler Franzenburg
AT-LARGE FARMER

Gail Hickenbottom
AT-LARGE FRIEND OF FARMERS

Wendy Johnson
VICE-PRESIDENT; DISTRICT 2 - NORTH CENTRAL

Vic Madsen
AT-LARGE FARMER

Gayle Olson
DISTRICT 5 - SOUTHEAST

Mark Peterson
PRESIDENT; DISTRICT 4 - SOUTHWEST

Mark Quee
AT-LARGE FARMER

David Rosmann
AT-LARGE FARMER

Kurt Van Hulzen
AT-LARGE FRIEND OF FARMERS

Julie Wheelock
AT-LARGE FARMER



SESSIONS AT-A-GLANCE

BENTON

004

167-179

220

◆ FRIDAY, JANUARY 19

12:30 – 2 p.m.	An Economic Evaluation of Cover Crops in Midwestern Agriculture (1.5 CEUs)	Farming the Sun: The Ecology of Chemical Energy	Managing a Young and Growing Orchard	
3 – 4:30 p.m.	Carbonomics (1.5 CEUs)	Solar-Powered Livestock: From Plants to Animals	Using Habitat to Increase Beneficial Insects on Fruit and Vegetable Farms (1.5 CEUs)	
4:45 – 5:15 p.m.	Practical Farmers Update: Learn about PFI programming, finances, staffing and more			
5:15 – 5:30 p.m.	PFI Sustainable Agriculture Achievement Award presentation			
5:30 – 6:30 p.m.	Keynote Address: "An English Shepherd's Vision to Revive Rural America"			

◆ SATURDAY, JANUARY 20

SESSION 1 8:30 – 9:40 a.m.	The Shepherd's Life: Soil, Sheep Dogs and Social Media	Soil Health and Grazing: Can They Coexist? (1.0 CEU)	Field Preparation, Cultivation & Fertility	Q&A: Hiring Migrant & Seasonal Workers & Year-Round Employees
SESSION 2 10 – 11:10 a.m.	Teaching Livestock to Eat Weeds	Using the SmartMix Calculator to Develop Good Cover Crop Mixes (1.0 CEU)	Winter Vegetable Production	Learning From On-Farm Research: Horticulture
LUNCH & NETWORKING 11:30 a.m. – 1 p.m.	Rm. 220 – 240 (lunch)			
SESSION 3 1 – 2:10 p.m.	Pragmatic Approaches to Sustainability and Profitability	Indoor Mushroom Production and Marketing	Livestock Guardian Dogs 101	
SESSION 4 2:30 – 3:40 p.m.	Using Tea Bags to Assess Soil: A Low-Cost Approach? (1.0 CEU)	More Sunlight to Corn = Space for Cover, Companion and Cash Crops	GAP, FSMA and Post-Harvest Handling for Food Safety	
SESSION 5 4 – 5:10 p.m.	Soil Health: Continuous Testing, Continual Learning (1.0 CEU)	Growing Better Brussels Sprouts	Pack Shed and Post-Harvest Efficiency	



SESSIONS AT-A-GLANCE

230	240	250-252	260-262	275
	Risk and Conflict in Family Farm Businesses	Ecology & Management of Iowa's Common Vegetable Insect Pests	Non-Traditional Methods of Accessing Capital	Doudlah Farms Organics: How and Why We Transitioned to Organic
	How to Talk to Your Family About Succession Planning	Alternative Models and the Future of CSAs	Traditional Methods of Accessing Capital	Developing Relationships to Implement Conservation on Rented Cropland
Swine Genetics Made Easy		Physical Strengthening, Recovery & Injury Prevention for Vegetable Farmers	Organic No-Till: Soil Health & Regeneration vs. Short-Term Returns and Weeds	Separating Science From Pseudoscience
Making Your Planter Ready for Next Year		Balancing Quality of Life & Direct-Marketing by Crunching Numbers	Iowa Author Panel: Reviving Culture in Agriculture	Q&A With James Rebanks
Exhibit Hall (networking)				
Expanding Operations to Add Beef Cattle	Learning From On-Farm Research: Field Crops (1.0 CEU)	Q&A: Strengthening and Recovery With Tony Gallo	Better Food, Farm and Conservation Policies Through Involvement	Off-Target Movement: Can Herbicides Be Kept in Place? (1.0 CEU)
Estate Planning With Farming and Non-Farming Heirs	Q&A With Kathy Voth and Rachel Gilker	Foraging for Market: Morels and Greens	Land Access: Pitfalls and Potential	Cover Crops and Crop Rotations in Organic Systems Without Livestock
Leaving Your Legacy	Learning From On-Farm Research: Livestock (1.0 CEU)	Landowners: Are Weed-Free Fields the Best Your Farm Can Be?	Innovations in Weed Control	Livestock Insurance: Identifying Risks and Risk Management Tools

GROUND FLOOR

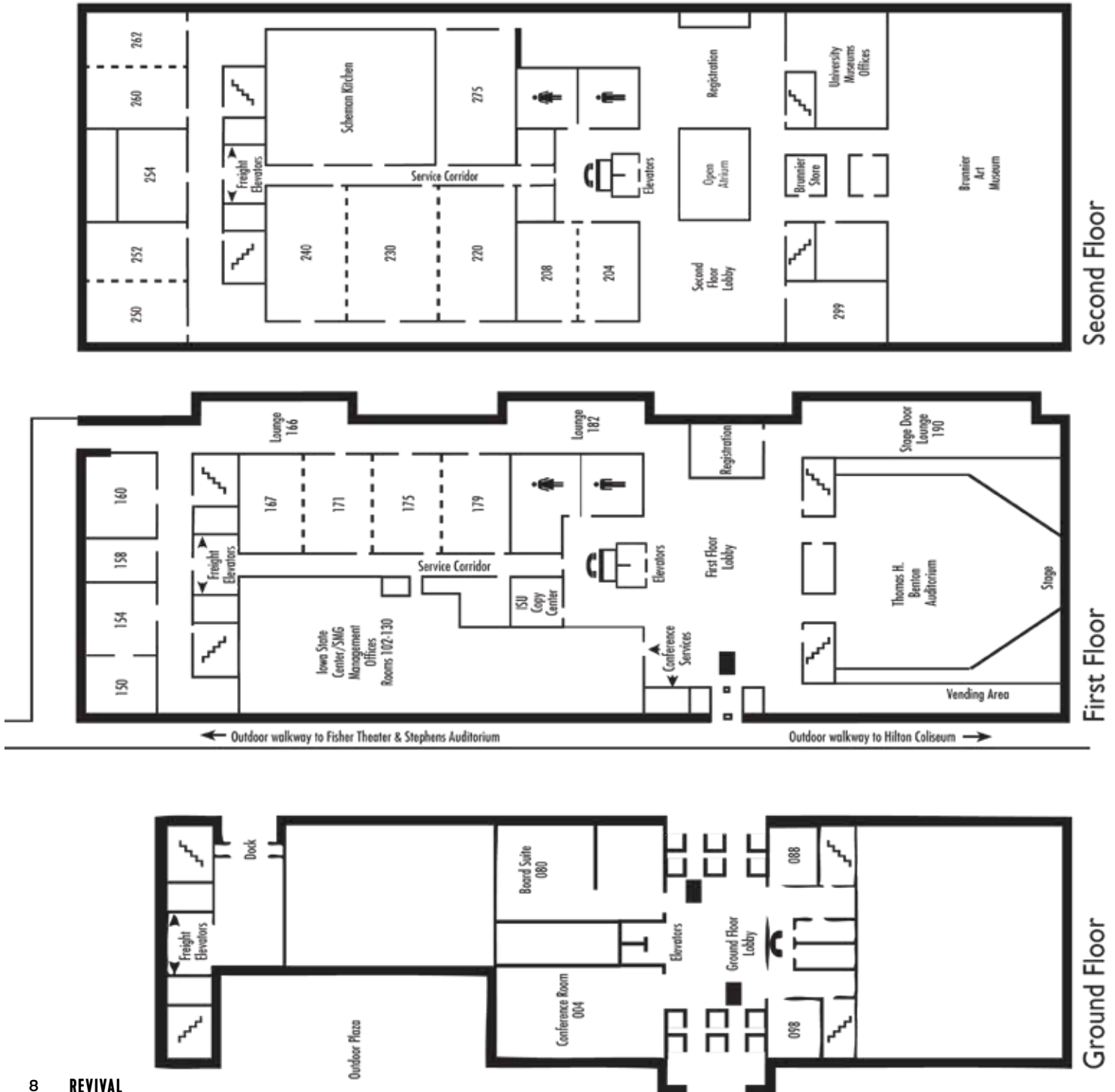
Conference Room 004
Board Suite 080
Conference Room 088
Conference Room 098

FIRST FLOOR

Thomas H. Benton Auditorium
Conference Rooms 150 - 179
Stage Door Lounge
Iowa State Center/SMG Management Office
Event and Conference Services
ISU Copy Center

SECOND FLOOR

Conference Rooms 204 - 299
Brunnier Art Museum and Store
University Museums Offices





SPONSORS & EXHIBITORS



**HELP US THANK THE SPONSORS AND EXHIBITORS WHOSE GENEROUS SUPPORT
HAS HELPED MAKE THIS CONFERENCE POSSIBLE!**

See a sponsor or exhibitor in the list below that you'd like to meet? Use the sponsor location key and map on pgs. 14-15 to help you more quickly find the groups you want to visit. (**Note:** Sponsors with an asterisk * by their names do not have a staffed table in the Exhibit Hall.)

LEVEL A SPONSORS

ALBERT LEA SEED

Albert Lea, Minnesota
Ben Hinueber
www.alseed.com
(800) 352-5247
@alseedorganics
seedhouse@alseed.com

APPLEGATE*

Bridgewater, New Jersey
Matt Nelson
www.applegate.com
(641) 373-2797
@applegate
matthew.nelson@applegate.com

CLIF BAR & CO.*

Emeryville, California
Rada Dogandjiev
www.clifbar.com
@clifbar
rada@clifbar.com

GRAIN MILLERS

Eden Prairie, Minnesota
Jessie VanderPoel
(952) 983-1277
jessie.vanderpoel@grainmillers.com

IOWA STATE UNIVERSITY AGRONOMY DEPARTMENT AND GRADUATE PROGRAM IN SUSTAINABLE AGRICULTURE

Ames, Iowa
Mary Wiedenhoeft
(515) 294-3274
mwiedenh@iastate.edu

NIMAN RANCH*

Hardy, Iowa
Philip Kramer
www.nimanranch.com
(515) 290-8636
@niman_ranch
philipk@nimanranch.com

PREMIER 1 SUPPLIES

Washington, Iowa
Joe Putnam
www.Premier1supplies.com
(800) 282-6631
info@premier1supplies.com

USDA/NRCS

Des Moines, Iowa
Jason Johnson
www.ia.nrcs.usda.gov
(515) 284-4262
@iowaNRCS
jason.johnson@ia.usda.gov

LEVEL B SPONSORS

CATALYST NNG

Urbandale, Iowa
Justin Toler
www.catalystnng.com
@catalystnng
(515) 254-1290
jtoler@catalystnng.com

HALL ROBERTS' SON/THE FERTRELL COMPANY

Postville, Iowa
Dan Hayes
www.fertrell.com
(563) 864-7421
hrson7421@gmail.com

IOWA FARM BUREAU FEDERATION*

West Des Moines, Iowa
www.iowafarmbureau.com
@iowafarmbureau

IOWA SARE

Ames, Iowa
Linda Naeve
www.iowasare.org
(515) 294-8946
lnaeve@iastate.edu

IOWA STATE UNIVERSITY EXTENSION AND OUTREACH

Ames, Iowa
David Baker
www.extension.iastate.edu
(515) 537-5502
@johnlawrenceisu
baker@iastate.edu

IROQUOIS VALLEY FARMS

Evanston, Illinois
Claire Mesesan
www.iroquoisvalleyfarms.com
(847) 859-6645
@iroquois_valley
info@iroquoisvalleyfarms.com

LEMKEN USA

Minnetonka, Minnesota
Jim Balstad and Jay Halbert
balstad@lemken.com; (701) 630-9154
j.halbert@lemken.com; (507) 951-2494
www.lemken.com/en-us
@lemkenmidwest

MAN@MACHINE

Grijpskerke, The Netherlands
Jos Pelgrom
www.manatmachine.com
(319) 759-1096
info@manatmachine.com

STONEBRIDGE LTD.

Cedar Falls, Iowa
Tim Daley
www.stonebridgeltld.org
(319) 277-4277
timd@stonebridgeltld.org

USDA FARM SERVICE AGENCY

Des Moines, Iowa
Bob Wegand
www.fsa.usda.gov/state-offices/iowa/index
(515) 254-1540

WELTER SEED AND HONEY CO

Onslow, Iowa
Karen Knepper
(800) 470-3325
info@welterseed.com

LEVEL C SPONSORS

AMERICAN NATIONAL INSURANCE

Council Bluffs, Iowa
Maureen Eickholt
www.mlagents.americannational.com/
maureeneickholt-7234
(712) 256-0246
maureen.eickholt@american-national.com

BAY SHORE SALES

Unionville, Michigan
Matt Sattelberg
www.bayshoresales.com
renae@bayshoresales.com

(Continued on pg. 10 →)



SPONSORS & EXHIBITORS



FARM CREDIT SERVICES*

Perry, Iowa
Teresa Davenport
www.fcsamerica.com
(515) 465-5318
@fcsamerica
teresa.davenport@fcsamerica.com

FARM NUTRIENTS

Rembrandt, Iowa
Adam Cook
www.farmnutrients.com
(712) 291-1701
adam_cook@farmnutrients.com

GREEN COVER SEED

Bladen, Nebraska
Colten Catterton
www.greencoverseed.com
(402) 984-1631
colten@greencoverseed.com

HERBRUCK'S POULTRY RANCH, INC.

Saranac, Michigan
Brian Geerlings
www.herbrucks.com
(616) 902-2025
bgeerlings@herbrucks.com

IOWA AGRICULTURAL MITIGATION INC.

Ames, Iowa
Kim Perlstein
www.iowamitigation.com
(515) 298-4974
kperlstein@iowamitigation.com

IOWA BARN YESTERDAY AND TODAY

Omaha, Nebraska
Karlene Kingery
www.iowabarnbook.com
(402) 556-9082
kakingery2@gmail.com

IOWA CENTRAL COMMUNITY COLLEGE AGRICULTURAL PROGRAM

Fort Dodge, Iowa
Mike Robertson
www.iowacentral.edu
(515) 574-1943
robertson@iowacentral.edu

IOWA CHOICE HARVEST

Penny Brown Huber
www.iowachoiceharvest.com
(515) 232-1344
pbrownhuber@iowachoiceharvest.com

IOWA ENVIRONMENTAL COUNCIL

Des Moines, Iowa
Ann Robinson
www.iaenvironment.org
(515) 244-1194
robinson@iaenvironment.org

IOWA FINANCE AUTHORITY

Des Moines, Iowa
Steve Ferguson
www.iowafinanceauthority.gov
@iowafinance
(515) 725-4928
steve.ferguson@iowa.gov

IOWA NATURAL HERITAGE FOUNDATION

Des Moines, Iowa
Erin Van Waus
www.inhf.org
(515) 288-1846
evanwaus@inhf.org

IOWA SHEEP INDUSTRY ASSOCIATION

Newton, Iowa
Regina Frahm
www.iowasheep.com
(641) 792-0065
info@iowasheep.com

IOWA WIND AND SOLAR

Fairfield, Iowa
Lewis Butler
www.iowawindandsolar.com
(800) 808-0786
bebright@iowawindandsolar.com

MODERN WOODMEN FRATERNAL FINANCIAL

Lincoln, Nebraska
Del Ficke
www.modern-woodmen.org
(402) 499-0329
fickecattle@outlook.com

MIDWEST ORGANIC AND SUSTAINABLE EDUCATION SERVICES (MOSES)*

Spring Valley, Wisconsin
Bailey Webster
www.mosesorganic.org
(715) 778-5775
bailey@mosesorganic.org

NATIONAL YOUNG FARMERS COALITION

Hudson, New York
Caitlin Arnold
www.youngfarmers.org
@youngfarmers
caitlin@youngfarmers.org



NATURAL RESOURCES DEFENSE COUNCIL*

Washington, D.C.
Lara Bryant
www.nrdc.org
@nrdcwater
lbryant@nrdc.org

ONE SOURCE SOLAR

Ankeny, Iowa
Mark Gowen
www.1sourcesolar.com
(515) 289-1974
mark@1sourcesolar.com

ORGANIC VALLEY - CROPP COOPERATIVE - ORGANIC PRAIRIE

La Farge, Wisconsin
Joe Klein
www.farmers.coop
(888) 809-9297
farmerhotline@organicvalley.com

PESTICIDE ACTION NETWORK

Minneapolis, Minnesota
Carmen Black
www.panna.org
(319) 331-3957
carmen@panna.org

PRUDENTERRA

Nevada, Iowa
Luke Gran
www.prudenterra.com
(515) 382-1239
@prudenterra
luke@prudenterra.com

(Continued on pg. 12 →)



SPONSORS & EXHIBITORS



RED DEVON USA

Bellevue, Iowa
Jamie Hostetler
(815) 718-1100
jamie@emypeople.net

RED FERN FARM

Wapello, Iowa
Tom Wahl
www.redfernfarm.com
(319) 729-5905

SCOLAR*

Omaha, Nebraska
Adam Masche
www.scolar.com
(402) 342-3500
organicgrain@scolar.com

SHOOTING STAR NATIVE SEEDS

Spring Grove, Minnesota
Jessi Strinmoen
www.shootingstarnativeseed.com
(507) 498-3944
info@ssns.com

SEED SAVERS EXCHANGE

Decorah, Iowa
Tom Wahlberg
www.seedsavers.org
(563) 382-5990
tom@seedsavers.org

SUSTAINABLE IOWA LAND TRUST

West Branch, Iowa
Suzan Erem
www.silt.org
(319) 800-8108
@sustainableiowa
info@silt.org

SUNOPTA

Hope, Minnesota
Laverne Klecker
www.sunopta.com
(507) 451-4724
laverne.klecker@sunopta.com

SUTTON AG

Salinas, California
Joe Sutton
www.suttonag.com
(831) 422-9693
info@suttonag.com

TALLGRASS PRAIRIE CENTER

Cedar Falls, Iowa
Justin Meissen
www.tallgrassprairiecenter.org
(319) 273-3836
justin.meissen@uni.edu

THE VINEGAR GUYS*

New Albon, Iowa
Brian Buessing
www.vinegarguys.com
(785) 562-7495
brian@vinegarguys.com

TOWN & COUNTRY INSURANCE/ HASTINGS MUTUAL INSURANCE

Webster City, Iowa
Doug Follmann
www.tcins.com
(515) 832-3787
dfollmann@tcins.com

UNI - GOOD NEIGHBOR IOWA

Cedar Falls, Iowa
Kamylar Enshayan
(319) 273-7575
kamylar.enshayan@uni.edu

USDA AMS

Des Moines, Iowa
Nina Biensen
www.ams.usda.gov/market-news/
organic
(641) 352-0649
nina.biensen@ams.usda.gov

USDA - NATIONAL AGRICULTURAL STATISTICS SERVICE

Des Moines, Iowa
Greg Thessen
www.nass.usda.gov
(515) 776-3400
nassrfoumr@nass.usda.gov

XERCES SOCIETY

Portland, Oregon
Sarah Foltz Jordan
www.xerces.org
(612) 845-4531
@xercessociety
sarah@xerces.org

LEVEL E SPONSORS

CONSERVATION DISTRICTS OF IOWA*

Des Moines, Iowa
Linda King
(515) 289-8300
Linda.King@cdiowa.org

IOWA BEEF CENTER*

Ames, Iowa
Dan Loy and Joe Sellers
www.iowabeefcenter.org
(515) 294-2333
beefcenter@iastate.edu



IOWA FORAGE & GRASSLAND COUNCIL*

Des Moines, Iowa
Joan O'Brien
www.iowaforage.org
(515) 262-8323
joano@agribiz.org

JOHNNY'S SELECTED SEEDS*

Winslow, Maine
www.johnnyseeds.com
(207) 238-5348
rcummings@johnnyseeds.com

RINCON-VITTOVA INSECTARIES*

Ventura, California
Kyra Rude
www.rinconvittova.com
(800) 248-2847
kyra@rinconvittova.com

THE ORGANIC & NON-GMO REPORT*

Fairfield, Iowa
Lori Larson
www.non-gmoreport.com
(641) 209-3426
@nongmoreport
lori@non-gmoreport.com

WHEATSFIELD COOPERATIVE*

Ames, Iowa
www.wheatfield.coop
(515) 232-4094

WOMEN, FOOD & AGRICULTURE NETWORK

Ames, Iowa
Wren Almitra
www.wfan.org
(215) 384-3094
@womenfoodagnet
wren@wfan.org



SPONSORS & EXHIBITORS



THANK YOU TO OUR B LEVEL SPONSORS



IROQUOIS VALLEY
FARMS



WELTER SEED & HONEY CO.

17724 Hwy. 136
Onslow, IA 52321-7549
(800) 470-3325
www.welterseed.com

SPONSORS & EXHIBITOR KEY

ALPHABETICAL LIST



Use this sponsor location key to help you locate sponsors or exhibitors you are interested in visiting. Look up their name in the list below, then use the maps on the right-hand page to find the location of their table.

NOTE: Letters "A - P" are on the 1st floor; "Q - Z" are on the 2nd floor.

- A Greener World - **M1**
- Ag Arts - **M2**
- Albert Lea Seed - **G3**
- American National Insurance - **Y1**
- Bay Shore Sales - **E1**
- Blue River Organic Seed - **A3**
- BlueStem Organic Feed Mill - **O4**
- Catalyst NNG - **B2**
- Center for Rural Affairs - **F1**
- Cowsmo - **P1**
- Current R/E Solar - **S3**
- Deer Creek Seed, Inc. - **K2**
- Farm Nutrients - **M3**
- Genetic Enterprises International - **A1**
- Grain Millers - **C1**
- Green Cover Seed - **R1**
- Hall Roberts' Son - The Fertrell Company - **Q4**
- Herbruck's Poultry Ranch, Inc. - **N1**
- I-CASH - **G2**
- Iowa Agricultural Mitigation, Inc. - **Y2**
- Iowa Barns Yesterday and Today - **M7**
- Iowa Central Community College Agricultural Program - **S4**
- Iowa Choice Harvest - **S5**
- Iowa Cover Crop - **M6**
- Iowa Environmental Council - **K3**
- Iowa Finance Authority - **N2**
- Iowa Natural Heritage Foundation - **Q1**
- Iowa Organic Association - **D2**
- Iowa SARE - **B1**
- Iowa Sheep Industry Association - **N3**
- Iowa Wind and Solar - **Q6**
- Iroquois Valley Farms - **H3**
- ISU Department of Agronomy/ Graduate Program in Sustainable Agriculture - **L2**
- ISU Extension and Outreach - **B3**
- La Crosse Seed - **I1**

- Lemken USA - **L3**
- Man@Machine - **O2**
- Modern Woodmen Fraternal Financial - **M5**
- National Young Farmers Coalition - **J3**
- Nature's Best LLC - **S1**
- Nature's International Certification Services - **L1**
- One Source Solar - **M4**
- Organic Valley - CROPP Cooperative - Organic Prairie - **O1**
- Peoples Company - **H2**
- Pesticide Action Network - **P2**
- Premier 1 Supplies - **K1**
- Prudenterra - **Q5**
- Red Devon - **P4**
- Red Fern Farm - **R4**
- Rimol Greenhouse Systems - **J2**
- Riverside Feeds LLC - **J1**
- Saddle Butte Ag Inc. - **F2**
- Seed Savers Exchange - **N4**
- Shooting Star Native Seeds - **P3**
- Stonebridge Ltd. - **E2**
- Sunopta - **Q3**
- Sustainable Iowa Land Trust - **R3**
- Sutton Ag Enterprises - **O5**
- Tallgrass Prairie Center - **E3**
- Town & Country Insurance / Hastings Mutual Insurance - **I2**
- Trees Forever - **A2**
- UNI - Good Neighbor Iowa - **Q2**
- USDA AMS - **R2**
- USDA Farm Service Agency - **G1**
- USDA National Agricultural Statistics Service - **S2**
- USDA NRCS - **D1**
- Welter Seed and Honey Co. - **H1**

- Xerces - **O3**

LEVEL E SPONSORS WITH PUBLICATIONS OR MATERIALS (FREE) - X1 AND X2

- Conservation Districts of Iowa
- Iowa Beef Center
- Iowa Forage & Grassland Council
- Johnny's Selected Seeds
- Rincon-Vitova Insectaries
- The Organic & Non-GMO Report
- Wheatsfield Cooperative
- Women, Food & Agriculture Network

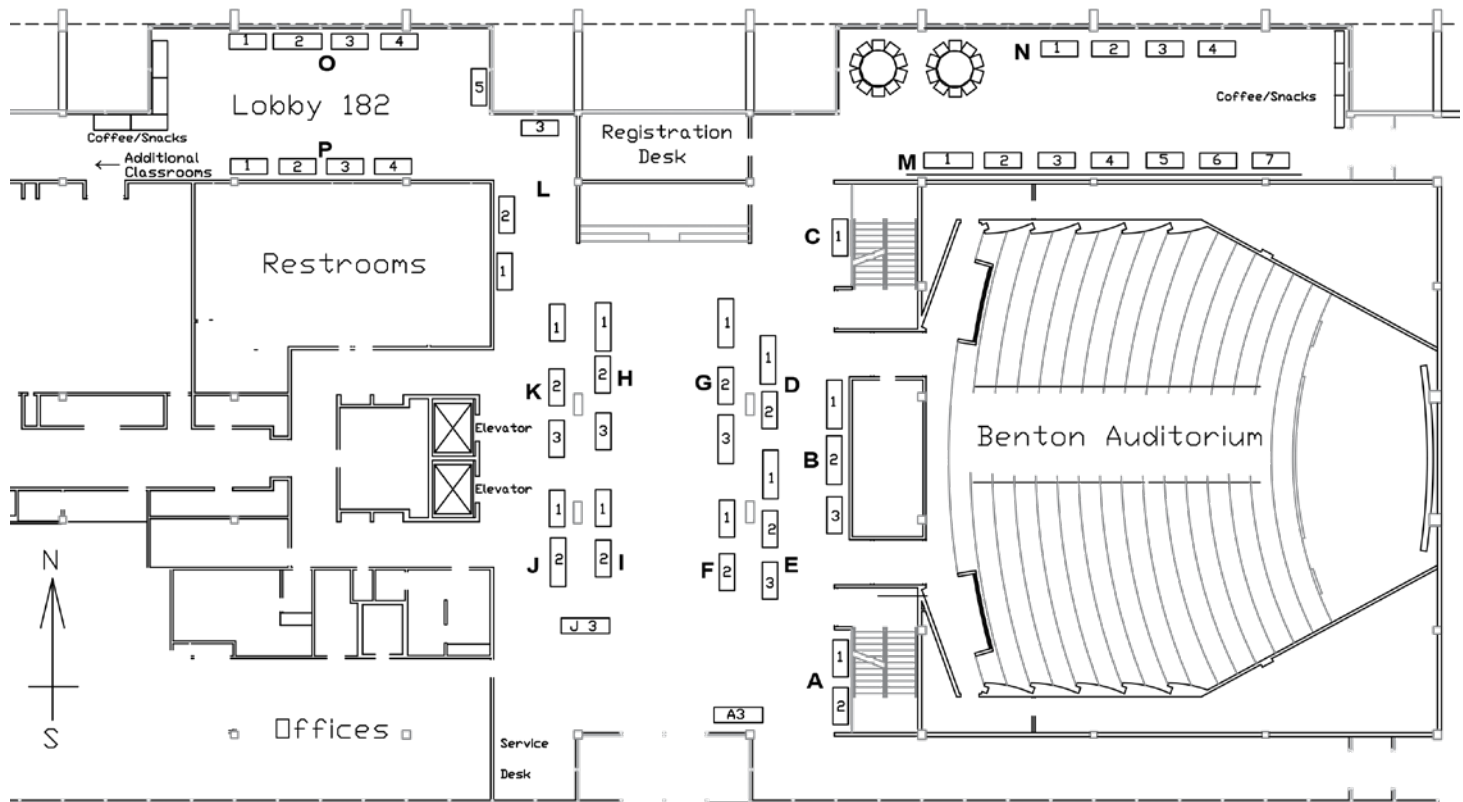
OTHER KEY AREAS TO VISIT

- Practical Farmers of Iowa (*items to purchase, brochures and more*) - **T**
- Silent Auction - **2nd Floor (west of Q)**
- Book Signing with James Rebanks - **2nd Floor (west of W)**
- Posters - **W**

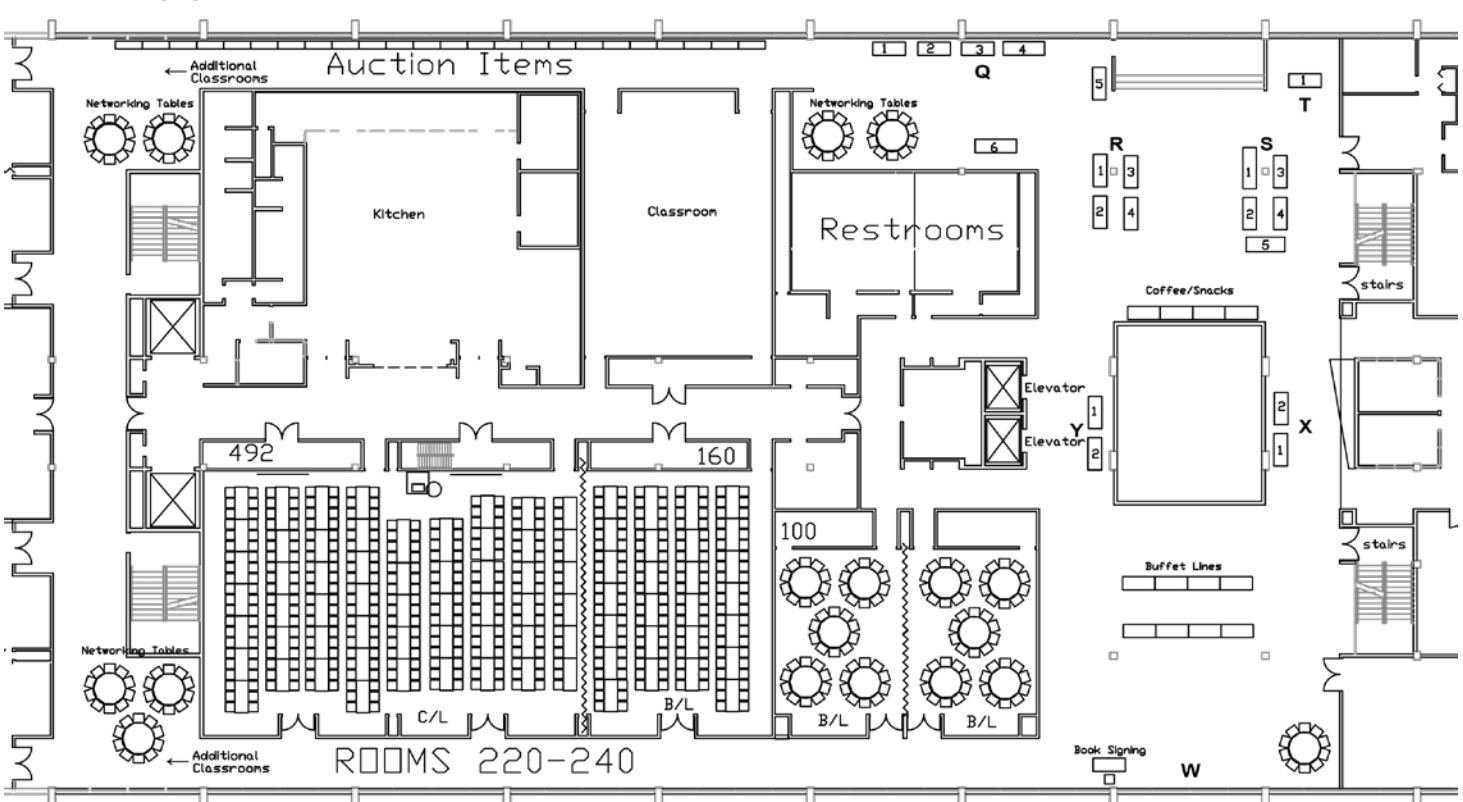
SPONSORS & EXHIBITOR KEY

LOCATION MAP

1ST FLOOR



2ND FLOOR



FRIDAY SCHEDULE

AT-A-GLANCE

TIME	SESSION	PRESENTER(S)	LOCATION
11 a.m	Exhibit Hall Opens		1st & 2nd Floors
11 a.m. – 12:30 p.m.	Conference Registration		1st Floor
12:30 p.m	Silent Auction Opens		2nd Floor
12:30 – 2 p.m	Session 1		
	Farming the Sun: The Ecology of Chemical Energy	Mark Bader	004
	Doudlah Farms: Why & How We Transitioned to Organic	Mark Doudlah	275
	Risk and Conflict in Family Farm Businesses	Rena Striegel Dan and Lorna Wilson	240
	An Economic Evaluation of Cover Crops in Midwestern Agriculture ▶ 1.5 CEU credits	Alejandro Plastina	Benton
	Managing a Young & Growing Orchard	Emma and Marcus Johnson	167-179
	Non-Traditional Methods of Accessing Capital	Rick Hartmann Melissa Dunham Jordan Clasen	260-262
	Ecology & Management of Iowa's Common Vegetable Insect Pests	Donald Lewis	250-252
2 – 3 p.m	BREAK to Meet with Sponsors & Exhibitors (snacks available in Exhibit Hall)		
3 – 4:30 p.m	Session 2		
	Solar-Powered Livestock: From Plants to Animals	Mark Bader	004
	Using Habitat to Increase Beneficial Insects on Fruit & Vegetable Farms ▶ 1.5 CEU credits	Sarah Foltz Jordan, Jennifer Hopwood	167-179
	Carbonomics ▶ 1.5 CEU credits	Keith Berns	Benton
	Traditional Methods of Accessing Capital	Chad Hensley, Jenny Quiner Rory Van Wyk	260-262
	Developing Relationships to Implement Conservation on Rented Cropland	Lee Tesdell, Mike Helland, Gary Guthrie, Danny Harrison	275
	Alternative Models & the Future of CSAs	Laura Krouse, Danelle Myer, Jordan Scheibel, Erik Sessions	250-252
	How to Talk to Your Family About Succession Planning	Rena Striegel Dan and Lorna Wilson	240
4:30 – 4:45 p.m	BREAK		
4:45 – 5:30 p.m	♦ Annual Business Meeting ♦ PFI Sustainable Agriculture Achievement Award Presentation		Benton
5:30 – 6:30 p.m	Keynote Address: "An English Shepherd's Vision to Revive Rural America"	James Rebanks	Benton
7 – 11 p.m	PFI POTLUCK PARTY		CPMI EVENT CENTER

ROOM LOCATIONS 004 – Ground Level 150-179 – 1st Floor Benton Auditorium – 1st Floor 250-275 – 2nd Floor

FRIDAY

SESSION DESCRIPTIONS

◀ SESSION 1 ▶
12:30 – 2 P.M.

Farming the Sun: The Ecology of Chemical Energy

Whether grass, legume, deciduous or coniferous, almost all plants grow the same way. Thus, a firm grasp of the basic biochemistry behind plant growth is essential to the success of the forage, the animal and the farmer. This two-part series offers an in-depth – yet simplified – understanding of energy cycling and photosynthetic plant growth. This session will focus on the importance of gas exchange, soil and water quality, and vital symbiotic relationships with microflora in the environment.

Mark Bader is the owner and president of Free Choice Enterprises, Ltd., a family-owned and -operated business that has catered to the needs of the livestock industry in the U.S. and internationally for over 60 years. His holistic approach to livestock nutrition focuses on natural supplementation of established feed programs that allow the animal to decide what it needs to thrive. Mark was raised farming cattle, and he and his wife, Janna, currently raise beef on their farm in Potosi, Wisconsin.

Doudlah Farms Organics: Why & How We Transitioned to Organic

Regenerate your soils using value-added organic production. Learn how Doudlah Farms transitioned to organic by using cover crops while aligning with today's consumer demands. Soils Health = Plant Health = Human Health. Learn how!

Mark Doudlah raises corn, soybeans and wheat on Doudlah Farms, a certified organic farm near Cooksville, Wisconsin. He is currently the fourth generation to farm his family's land. Mark and his wife, Lucy, have an organic cropping system on 1,750 acres using cover crops. He has integrated 15-inch row spacing in all crops with controlled traffic tram lanes. He was also an early adopter of one-pass no-till and minimum-tillage systems.

Risk and Conflict in Family Farm Businesses

Why do we avoid communications in family businesses? How can we create an atmosphere where communication can happen, even when the stakes are high? Business coach Rena will help families address these issues. She will discuss the reasons why conflict occurs in family businesses and offer strategies to minimize conflict. In a follow-up session in Session II, Rena will help you talk about succession planning, including challenges, and how to prepare for the discussion, clarify expectations and deal with disagreements.

Rena Striegel, of Transition Point Business Advisors, is an internationally recognized business coach and consultant with more than 20 years of experience working directly with farmers to identify and implement

strategies that create growth and profitability. Rena grew up on a dairy and hog farm in What Cheer.

Dan and Lorna Wilson of Paulina, farm with two sons, one daughter and two daughters-in-law. They are previous winners of Practical Farmers of Iowa's Sustainable Agriculture Achievement Award.

An Economic Evaluation of Cover Crops in Midwestern Agriculture

CCAs: 1.5 CEU credits approved – Crop Management

In 2017, Alejandro, along with a team of researchers from ISU and Practical Farmers of Iowa, collected over 800 responses to a Midwest cover crop economics survey. He will report the results of this research, including partial budgets created from cover crop scenarios, and share an economic evaluation of the social benefits of cover crops associated with reducing soil erosion and keeping nutrients in place.

Alejandro Plastina is an assistant professor and extension economist at ISU. His area of specialization is agricultural production and technology, with an emphasis on farm business and financial management.

Managing a Young & Growing Orchard

Returning to the farm in 2012, Emma and Marcus have expanded the orchard from the initial planting in 2003, focusing on medium-density production for farmers markets, CSA and institutional buyers. They will share their orchard management schedule and practices, orchard improvements, and successes and mistakes they've made as beginning orchardists.

Emma and Marcus Johnson own and operate Buffalo Ridge Orchard in Central City, with Emma's parents, Mary and Vernon Zahradnik. The 80-acre farm has 5 acres of diversified vegetables and 13 acres of orchard, including 3,600 apple trees consisting of 50 new and classic varieties.

Non-Traditional Methods of Accessing Capital

Capital can be essential when establishing or expanding your farming operation, but figuring out where to seek capital can be difficult. Three farmers will share their experiences with accessing capital by non-traditional methods such as crowd-source funding and CSA member investments.

Rick Hartmann runs Small Potatoes Farm, a certified organic vegetable farm near Minburn, with his wife, Stacy. From 2004 until 2017, they raised vegetables, primarily marketed through a successful CSA in the Ames-Des Moines corridor. Rick also works as an inspector for various accredited organic certifying agencies.

(Continued on pg. 18 →)

FRIDAY SESSION DESCRIPTIONS

Melissa Dunham and her husband, **Andrew**, operate *Grinnell Heritage Farm* in Grinnell. Together they raise 25 acres of certified organic vegetables, herbs and fruit.

Jordan Clasen operates *Grade A Gardens* on 10 acres of rented certified organic land. Jordan markets his vegetables, eggs and specialty crops through a CSA and the *Downtown Farmers' Market* in Des Moines.

Ecology & Management of Iowa's Common Vegetable Insect Pests

Donald will examine the ecology of common vegetable pests to better understand how pests develop into populations that cause unacceptable losses, and why populations can vary from year to year and place to place. While much of insect ecology is out of our control, Donald will discuss IPM tactics that can help solve pest problems while preserving the ecosystem.

Donald Lewis is a professor and extension entomologist with ISU. He is responsible for outreach education on insect pest management in fruits, vegetables, turfgrass, trees and shrubs, and households.

◀ SESSION 2 ▶
3 – 4:30 P.M.

Solar-Powered Livestock: From Plants to Animals

While all biological components in feeds and forages can theoretically be converted to caloric energy, not all are actually usable by the animal. Both plant and animal metabolic requirements must be met before growth and production can occur. Mark will discuss how biochemical, microbial and mineral-nutrient interactions in livestock relate to the consumption of feeds and forages within the surrounding environment, and to feed efficiency. He will also discuss sustainable practices to overcome imbalances; optimize dietary intake to improve nutritional balance and health; and maximize performance and output.

Mark Bader is the owner and president of *Free Choice Enterprises, Ltd.*, a family-owned and-operated business that has catered to the needs of the livestock industry in the U.S. and internationally for over 60 years. His holistic approach to livestock nutrition focuses on natural supplementation of established feed programs that allows the animal to decide what it needs to thrive. Mark was raised farming cattle, and he and his wife, Janna, currently raise beef on their farm in Potosi, Wisconsin.

Using Habitat to Increase Beneficial Insects on Fruit & Vegetable Farms

CCAs: 1.5 CEU credits approved – Integrated Pest Management

Providing on-farm habitat for pollinators and predatory insects can take a variety of forms. Sarah and Jennifer have installed prairie plantings and other habitat around the Midwest; they will share

specific examples and best practices, and will answer questions about beetle banks, prairie, field borders and flowering strips.

Sarah Foltz Jordan works as the *Xerces Society* pollinator conservation specialist for the Great Lakes Region. Based in Minnesota, Sarah also farms organic fruits and vegetables, and is an avid mushroom and plant forager.

Jennifer Hopwood is a senior pollinator conservation specialist for the *Xerces Society*, based in eastern Nebraska. Her focus in recent years has been on roadside and farm habitat for pollinators, as well as pesticide risk mitigation.

Carbonomics

CCAs: 1.5 CEU credits approved – Soil & Water Management

Carbonomics is a unique approach to looking at the big picture of soil health by comparing the economy of a country to the economy of the soil. This session will explore the relationship between plants, soil and biology – and how they are interconnected. We will look at supply, demand, currency, capital, energy, resources, infrastructure and defense. The role of carbon in this system, and how it functions as currency, will be explored.

Keith Berns combines 20 years of no-till farming with 10 years of teaching about agriculture and computers. In addition to no-tilling 2,500 acres of irrigated and dryland corn, soybeans, rye, triticale, peas, sunflowers and buckwheat in south-central Nebraska, he also co-owns and operates *Green Cover Seed*, one of the major cover crop seed providers and educators in the U.S. Through *Green Cover Seed*, Keith has experimented with over 100 different cover crop types and hundreds of mixes planted into various situations and has learned a great deal about cover crop growth, nitrogen fixation, moisture usage and use of cover crops by grazers. Keith also developed the *SmartMix Calculator*, a widely used cover crop selection tool.

Traditional Methods of Accessing Capital

Capital can be essential when establishing or expanding your farming operation, but figuring out where to seek capital can be difficult. Three farmers will share their experiences with accessing capital by traditional methods such as bank loans, EQIP funding and much more.

Chad Hensley and his wife, **Katie**, raise cut flowers on 1.5 acres. They specialize in heirloom, open-pollinated and specialty crops. In 2016 they added beef cattle to their farm located near Lamoni.

Jenny Quiner started *Dogpatch Urban Gardens* in the fall of 2015 with the help of her husband, **Eric**. They farm a small-scale market garden growing produce naturally with organic principles and sustainable methods on a quarter-acre within the Des Moines city limits.

Rory Van Wyk grew up on a small, diverse livestock farm. He and his wife, **Lynette**, are working to teach daughters, **Annika** and **Emma**, to be good stewards of their 40 acres.

FRIDAY SESSION DESCRIPTIONS

Developing Relationships to Implement Conservation on Rented Cropland

The four speakers in this session represent landowner-tenant relationships where the landowner and tenant together implemented conservation practices on the rented ground. They have added in-field and edge-of-field conservation practices such as cover crops, no-till, terraces, a waterway, a bioreactor, prairie strips and a saturated buffer. Both pairs will review how they started conversations about these practices, and the legal and financial arrangements they agreed upon to put these practices in place.

Lee Tesdell farms near Slater on a Century Farm that has been in his family since 1884. On a small scale, he raises cross-bred sheep and layer hens. Lee participates in the Conservation Reserve Program, Regional Conservation Partnership Program and the Environmental Quality Incentives Program. He rents his crop ground to Mike Helland.

Mike Helland operates a Heritage Farm in Huxley that has been in his family since 1861. He has no-tilled beans for 23 years, one-tills his corn and integrates livestock on the farm. Last year, he raised 500 acres of cereal rye for pasture and hay for cattle.

Gary Guthrie, "The Carrot King," has farmed fresh vegetables at Growing Harmony Farm near Nevada for more than 20 years. A lifetime member of Practical Farmers of Iowa, he has been active in hosting conservation- and production-focused field days. Gary works with his tenant, Danny Harrison, to care for his rented farmland.

Danny Harrison started farming in 1976 on his family operation near Nevada. He raises corn, hard red winter wheat and soybeans. Danny has years of experience in no-till production and started using cover crops about five years ago. He rents land from his neighbor, Gary Guthrie.

Alternative Models & the Future of CSAs

Many diversified vegetable farmers rely on CSAs for a stable market and early-season cash flow. But with more options to find local food, will CSAs survive? Three farmers will share their CSA models and experiences, discuss their views of trends and markets in Iowa, and answer audience questions.

Laura Krouse manages 72 acres near Mt. Vernon where she grows vegetables, oats, hay and cover crops, and also operates Abbe Hills Farm CSA.

Danelle Myer is the fifth generation to farm her family's land near Logan. At One Farm, Danelle raises vegetables for farmers markets, pop-up farm stands, online ordering, and restaurants and wholesale in Omaha and Des Moines.

Jordan Scheibel raises vegetables at Middle Way Farm in Grinnell. He sells through a traditional and a customizable CSA, at farmers markets and through Iowa Food Cooperative, as well as limited wholesale markets.

Erik Sessions operates Patchwork Green Farm in Decorah, where he raises vegetables. He uses a market CSA, and also sells at farmers markets, to restaurants and through Oneota Co-op.

How to Talk to Your Family About Succession Planning

Why do we avoid communications in family businesses? How can we create an atmosphere where communication can happen, even when the stakes are high? As a follow-up to her first session, Rena Striegel will help you talk about succession planning, including challenges, and how to prepare, clarify expectations and deal with disagreements.

Rena Striegel, of Transition Point Business Advisors, is an internationally recognized business coach and consultant with more than 20 years of experience working directly with farmers to identify and implement strategies that create growth and profitability. Rena grew up on a dairy and hog farm in What Cheer.

Dan and Lorna Wilson of Paulina, farm with two sons, one daughter and two daughters-in-law. They are previous winners of Practical Farmers of Iowa's Sustainable Agriculture Achievement Award.

JOIN US!

◀ PRACTICAL FARMERS' YEAR IN REVIEW ▶

4:45 P.M. FRIDAY ♦ BENTON

PLEASE JOIN US to hear a summary of Practical Farmers' work in 2017 – and hear plans for 2018 and beyond (we have some exciting news on the horizon). We just completed our strategic plan for 2018 – 2020 and look forward to sharing our mission, vision and priorities for the coming years.

BOARD ELECTIONS will also take place. If you are a PFI member, please come and vote! As a member-led organization, it's vital that your voice is heard. Come choose the members who will help lead PFI!

NOTE: This meeting is open to everyone; you don't have to be a PFI member to attend!

◀ PFI SUSTAINABLE AGRICULTURE ACHIEVEMENT AWARD PRESENTATION ▶

5:15 P.M. FRIDAY ♦ BENTON

PLEASE JOIN US as we present **Earl Hafner**, of Early Morning Harvest in Panora, with PFI's 2018 Sustainable Agriculture Achievement Award.

Earl farms with his son, Jeff, who together operate a diversified farm that includes certified organic row crops and grass-fed cattle; hogs; small grains; vegetables raised in an aquaponics greenhouse; pastured poultry for egg production; and flours milled on-site from certified organic cereal grains (wheat, rye, buckwheat, and corn meal) raised on the farm.



"Earl has done many innovative and diverse agricultural projects," says PFI member Donna Prizgintas, who nominated Earl for the award. "He is an innovator with organic practices in crops and is now exploring further grass-fed ranching techniques for his cattle. He has also created a value-added grain-milling and distribution business on his farm. Earl just has a frog in every pocket – and he is one of the nicest men I know."

KEYNOTE ADDRESS

DON'T MISS IT! ▶ 5:30 P.M. FRIDAY ♦ BENTON

AN ENGLISH SHEPHERD'S VISION TO REVIVE RURAL AMERICA

James Rebanks will talk about his farming life, as recounted in his *The New York Times* bestselling memoir "The Shepherd's Life." James is a passionate advocate for heritage breeds of sheep, cattle and crops, and farming in the tried-and-tested older ways that have roots in his landscape dating back 4,000 to 5,000 years. He shepherds in the mountains in the north of England.

He lives and works on the farm his father and grandfather farmed before him, in a landscape his family has worked for over six centuries.

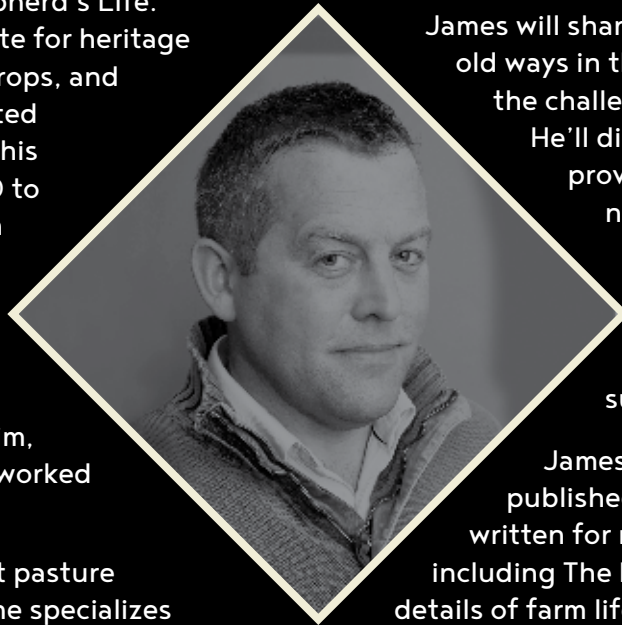
The farm is largely permanent pasture and hay meadows, on which he specializes in raising high-value breeding stock: native

Herdwick and Swaledale sheep, and a British cattle breed called Blue Greys.

James will share what it's like to farm using old ways in the modern world, both the challenges and opportunities.

He'll discuss how traditional ways provide many of the answers we need for a farming future in which antibiotics, wormers, pesticides, herbicides and oil may all be reduced in effectiveness or are in scarce supply.

James is a bestselling author, published in 20 countries. He has written for newspapers and magazines including *The New York Times*, and he shares details of farm life daily with 100,000 Twitter followers (@herdyshepherd1)—perhaps, the most-followed farming account in the world.



SPECIAL: Book Signings With James Rebanks at the Conference

James will hold two book signings of his memoir, "The Shepherd's Life," during the conference:

♦ Friday, Jan. 19: 2 – 3 p.m.; 2nd Floor (see key on pg. 15 for location)

♦ Friday, Jan. 19: During the PFI Potluck Party

Books will be available to purchase, or bring your own copy!

Learn more from James! He will also present at two sessions on Saturday morning, including a Q&A.

*"The future we have been sold doesn't work;
Applying the principles of the factory floor to the natural world
just doesn't work. Farming is more than a business. Food is more
than a commodity. Land is more than a mineral resource."*

– JAMES REBANKS



PFI POTLUCK PARTY!

CPMI EVENT CENTER
2321 NORTH LOOP DRIVE, AMES

Please bring food and beverages to share!

7 – 11 P.M.

JOIN US FOR FOOD, CAMARADERIE AND CELEBRATION!

HOSTED BY:

Ty and Bobbie Gustafson, Donna Prizgintas and Lonna Nachtigal

- Catch up with old friends, and make new ones.
- Continue good conversations and networking.
- Visit with some of the conference speakers

DIRECTIONS FROM SCHEMAN:

- Head south on University Blvd.
- Turn LEFT onto Airport Road.
Note: There is a roundabout at this intersection; you must be in the left lane as you enter the roundabout in order to access Airport Road.
- Take the SECOND LEFT onto North Loop Drive, then the FIRST RIGHT to access parking.



Note: There are limited outlets for slow cookers. Practical Farmers will provide a main dish, water and tableware.

**WE HOPE TO SEE YOU
THERE!**

FOOD AT THE CONFERENCE

Practical Farmers of Iowa strives to source as much food from our members as possible for our events. As part of our belief in paying our members for their hard work and time, we pay them market rates for all food they provide. Much of the food at the conference has been supplied by PFI farmers. Enjoy the diverse array of locally raised products supplied by the following PFI-member farmers and businesses!

PRE-CONFERENCE

THURSDAY AFTERNOON SNACK

Squash Hummus, Pita Chips, Tortilla Chips, Carrots, Prosciutto

Winter Squash from 1). Lee's Greens - Nevada; 2). Rolling Acres Farm - Atlantic (procured through Farm Table Delivery - Harlan) | **Prosciutto** donate by Niman Ranch

FRIDAY MORNING SNACK

Oatmeal Bread, Cinnamon-Raisin Bread and Apple Bread

Bread baked by Stop & Smell the Flours - Kelley | **Eggs** from Madsen Stock Farm - Audubon | **Flour** from Early Morning Harvest - Panora | **Apples** from Iowa Choice Harvest - Marshalltown

THROUGHOUT THE CONFERENCE

Tea donated by Wheatsfield Cooperative - Ames | **Cream** from Hansen's Dairy - Hudson | **Clif Bars** donated by Clif Company | **Apples** from Appleberry Farm - Marshalltown

FRIDAY AFTERNOON SNACK

Squash Hummus, Pita Chips, Tortilla Chips, Carrots, Prosciutto

Winter Squash from 1). Lee's Greens - Nevada; 2). Rolling Acres Farm - Atlantic (procured through Farm Table Delivery - Harlan) | **Prosciutto** donate by Niman Ranch

FRIDAY NIGHT PFI POTLUCK AT CPMI Prepared by Story City Locker - Story City

Hog Roast Meat from Crooked Gap Farm - Knoxville | **Buns** baked by Madrid Bakery - Madrid (using Early Morning Harvest flour - Panora) | **Kidney Beans** from Darren Fehr - Mallard | **Salad Greens** from Lee's Greens - Nevada

SATURDAY BREAKFAST

Polenta Breakfast Buffet, Aronia Berry Muffins, Hard-Boiled Eggs

Polenta from Early Morning Harvest - Panora | **Breakfast Sausage** from Remnant Hills Farm - Nevada | **Walnuts** from Madsen Stock Farm - Audubon | **Cream** from Hansen's Dairy - Hudson | **Honey** from Early Morning Harvest - Panora | **Butter** from Hansen's Dairy - Hudson | **Maple Syrup** from Turkey River Farm - Elkport | **Butter** from Hansen's Dairy - Hudson | **Eggs** from AJ Farms - Shelby | **Aronia Berries** from Madsen Stock Farm - Audubon | **Flour** from Early Morning Harvest - Panora

SATURDAY LUNCH

Brats, Roasted Vegetables, Salad, Ice Cream with a Mixed-Berry Sauce

Brats donated by Niman Ranch | **Buns** baked by Madrid Bakery - Madrid (using Early Morning Harvest flour - Panora) | **Potatoes** from 1). Dick Schwab - Solon; 2). One Farm - Logan (procured through Farm Table Delivery - Harlan) | **Sweet Potatoes** from Grinnell Heritage Farm - Grinnell (procured through Farm Table Delivery - Harlan) | **Carrots** from Wallace Center - Greenfield (procured through Farm Table Delivery - Harlan) | **Winter Squash** from 1). Lee's Greens - Nevada; 2). Rolling Acres Farm - Atlantic (procured through Farm Table Delivery - Harlan) | **Salad Greens** from Lee's Greens - Nevada | **Micro Greens** from Organic Greens - Kalona | **Ice Cream** from Hansen's Dairy - Hudson | **Berries** (strawberries; red and black raspberries; and blackberries) from Lee's Greens - Nevada

SATURDAY AFTERNOON SNACK

Brownies and Popcorn

Brownies baked by Stop & Smell the Flours - Kelley | **Eggs** from Madsen Stock Farm - Audubon | **Flour** from Early Morning Harvest - Panora | **Popcorn** from Rosmann Family Farms - Harlan

CONFERENCE

SATURDAY SCHEDULE

TIME	SESSION	PRESENTER(S)	LOCATION
7:30 – 8:30 a.m.	Registration & Breakfast		1st Floor
8:30 – 9:40 a.m.	Session 1		
	The Shepherd's Life: Soil, Sheep Dogs & Social Media	James Rebanks	Benton
	Soil Health and Grazing – Can They Coexist? ▶ 1.0 CEU credit	Alan Franzluebbbers	004
	Organic No-Till: Soil Health & Regeneration vs. Short-Term Returns & Weeds	Jack Erisman	260–262
	Field Preparation, Cultivation & Fertility	Michael Kilpatrick	167–179
	Physical Strengthening, Recovery & Injury Prevention for Vegetable Farmers	Tony Gallo	250–252
	Swine Genetics Made Easy	Bob Owen	230
	Separating Science From Pseudoscience	Kathy Voth, Rachel Gilker	275
	Q&A: Hiring Migrant & Seasonal Workers and Year-Round Employees	Melissa Garcia, Amy Beller	220
9:40 – 10 a.m.	BREAK to Meet with Sponsors & Exhibitors (snacks available in Exhibit Hall)		
10 – 11:10 a.m.	Session 2		
	Using the SmartMix Calculator to Develop Good Cover Crop Mixes ▶ 1.0 CEU credit	Keith Berns	004
	Balancing Quality of Life and Direct Marketing by Crunching Numbers	Tom Cory	250–252
	Making Your Planter Ready for Next Year	Randy Peterson	230
	Learning From On-Farm Research: Horticulture	Carmen Black, Rob Faux, Liz Kolbe	220
	Iowa Author Panel: Reviving Culture in Agriculture	Susan Futrell, Brandi Janssen, Mary Swander	260–262
	Teaching Livestock to Eat Weeds	Kathy Voth	Benton
	Winter Vegetable Production	Michael Kilpatrick	167–179
	Q&A With James Rebanks	James Rebanks	275
11:10 – 11:30 a.m.	BREAK to meet with Sponsors & Exhibitors (snacks available in Exhibit Hall)		
11:30 a.m. – 1 p.m.	LUNCH & NETWORKING Notes: ♦ The buffet is set up in the lobby, but seating is in Rm. 220–240 ♦ Be sure to bring your lunch ticket (find it in the back of your name badge!). ♦ Wondering about the tablewear at lunch? Don't worry, we're not throwing it out – it's compostable! ♦ Please continue your conversations in the lobby after eating so we can clean the room for the next session.		220–240

ROOM LOCATIONS 004 – Ground Level 150–179 – 1st Floor Benton Auditorium – 1st Floor 250–275 – 2nd Floor

AT-A-GLANCE

TIME	SESSION	PRESENTER(S)	LOCATION
1 – 2:10 p.m.	Session 3		
	Pragmatic Approaches to Sustainability and Profitability	Whilden Hughes	Benton
	Learning From On-Farm Research: Field Crops ▶ 1.0 CEU credit	Tim Sieren, Jack Boyer, Stefan Gailans	240
	Off-Target Movement: Can Herbicides Be Kept in Place? ▶ 1.0 CEU credit	Bob Hartzler	275
	Expanding Operations to Add Beef Cattle	Matthew and Lori Wiese, Joe Sellers	230
	Better Food, Farm and Conservation Policies Through Involvement	Kamyar Enshayan, Anna Johnson	260-262
	Indoor Mushroom Production and Marketing	Tyson Allchin	004
	Livestock Guard Dogs 101	Angela Johnson	167-179
	Q&A: Strengthening and Recovery With Tony Gallo	Tony Gallo	250-252
2:10 – 2:30 p.m.	BREAK to meet with Sponsors & Exhibitors (snacks available in Exhibit Hall)		
2:30 – 3:40 p.m.	Session 4		
	Using Tea Bags to Assess Soil: A Low-Cost Approach? ▶ 1.0 CEU credit	Marshall McDaniel	Benton
	Cover Crops and Crop Rotations in Organic Systems Without Livestock	Mark Doudlah	275
	GAP, FSMA and Post-Harvest Handling for Food Safety	Michael Kilpatrick	167-179
	Estate Planning with Farming and Non-Farming Heirs	Bonnie and Vance Haugen, Rachel Dahl	230
	Q&A With Kathy Voth and Rachel Gilker	Kathy Voth, Rachel Gilker	240
	Foraging for Market: Morels and Greens	Jill Beebout, Sarah Foltz Jordan	250-252
	Land Access: Pitfalls and Potential	Kate Edwards, Brett Olson	260-262
	More Sunlight to Corn = Space for Cover, Companion and Cash Crops	Bob Recker	004
3:40 – 4 p.m.	BREAK to meet with Sponsors & Exhibitors (snacks available in Exhibit Hall)		
4 p.m.	Silent Auction Closes (must be present to win)		
4 – 5:10 p.m.	Session 5		
	Pack Shed and Post-Harvest Efficiency	Michael Kilpatrick	167-179
	Learning From On-Farm Research: Livestock ▶ 1.0 CEU credit	Bruce Carney, Tom Frantzen, Meghan Filbert	240
	Growing Better Brussels Sprouts	Ajay Nair, Andrew Dunham	004
	Leaving Your Legacy	Ashley Shafer, Steve Hamilton	230
	Landowners: Are Weed-Free Fields the Best Your Farm Can Be?	Lee Tesdell, Mike Helland, Gary Guthrie	250-252
	Livestock Insurance: Identifying Risks and Risk Management Tools	Ryan Marquardt, Rodney Sebastian	275
	Innovations in Weed Control	Leonard Mol, Hans Bishop	260-262
	Soil Health: Continuous Testing, Continual Learning ▶ 1.0 CEU credit	Mitchell Hora	Benton

ROOM LOCATIONS 004 – Ground Level 150-179 – 1st Floor Benton Auditorium – 1st Floor 250-275 – 2nd Floor

SATURDAY SESSION DESCRIPTIONS

◀ SESSION 1 ▶

8:30 – 9:40 A.M.

The Shepherd's Life: Soil, Sheep Dogs & Social Media

James will discuss his passion for healthy soil and diverse pastures, while detailing the practical management of his sheep flock: making traditional hay and keeping livestock well-fed through long, wet and cool winters. He'll speak about border collies and how critical they are to his "dog and stick" farming. You'll learn how James manages lameness, parasites and the extent to which he relies upon chemical "shop-bought" solutions. Economics and social media will be a part of the discussion.

James Rebanks is a shepherd in the mountains of northern England. He lives and works on the farm his family has worked for over six centuries. He farms native Herdwick and Swaledale sheep, and the British cattle breed called Blue Greys. His farm's acres are in permanent pasture and hay meadows, and he specializes in raising high-value breeding stock.

Soil Health and Grazing – Can They Coexist?

CCAs: 1.0 CEU credit approved – Soil & Water Management

Cattle grazing has a reputation of being hard on soil and water resources. But livestock that are managed based on available forage resources can have many benefits for agricultural production and environmental quality. In fact, farm resources can be used more efficiently when crops and livestock are combined on the landscape. This presentation explores the impacts of livestock on crop production, soil resource indicators and soil health.

Alan Franzluebbers is a research ecologist with USDA-ARS in Raleigh, North Carolina, and professor at North Carolina State University. Recent areas of research are in multi-species cover cropping, agroforestry, integrated crop-livestock systems, nitrogen management and conservation-tillage cropping.

Organic No-till: Soil Health & Regeneration vs. Short-Term Returns & Weeds

In partnership with Iowa Organic Association

What are the critical focal points for seasoned no-tillers transitioning to organic production? What about the focus for long-time organic producers looking to reduce tillage? These are open-ended questions that Jack will address when describing how his crop production system has evolved over the years.

Jack Erisman transitioned 2,000 acres into organic production "cold turkey" in 1990. While some might question this method, these are now certified organic acres of food-grade corn, soy and edible beans, as well as oats and seed rye. The farm, near Pana and Assumption, Illinois, has permanent and rotational pastures for 100-plus brood cows and forage-finished beef in a closed herd. Companion seeding, no-till systems and building soil are the practices driving the experiments.

Field Preparation, Cultivation & Fertility

In this session Michael will cover the principles of field prep, cultivation and fertility, and how these principles relate to various scales of vegetable production. He'll discuss hacks, tools and techniques for farms of all sizes to speed up farm processes.

Michael Kilpatrick and his brother, Philip, started Kilpatrick Family Farm in Middle Granville, New York, in 2005. They grew the farm to over 500 acres, with 15 acres in field vegetable production rotated on 50 tillable acres; 100 acres of pasture for layers, broilers and turkeys; and 350 acres of woodlot. Products were sold to a 250-member CSA, farmers markets, co-ops, restaurants, institutional buyers and wholesale. The farm pushed the boundaries in winter production and season extension, and created a highly profitable business model. In 2015, Michael and his family moved to Ohio, where Michael directs his passion for farming toward helping other farmers become more efficient, productive, sustainable and profitable.

Physical Strengthening, Recovery & Injury Prevention for Vegetable Farmers

A healthy body is a vegetable farmer's most important tool. During this interactive session, Tony will show farmers how to safely and effectively pull, lift, twist and carry, and teach techniques to strengthen muscle groups for better stability and endurance.

Tony Gallo is a senior physical therapist at Grinnell Regional Medical Center, where he has practiced since 1988. In addition to injury recovery and orthopedic care, he specializes in athletic performance and sports medicine.

Swine Genetics Made Easy

This crash course in swine genetics will introduce you to the characteristics of different pig breeds, especially those best suited to the outdoors, and cover how to select the right breed for your farm. Bob will discuss what to look for in body structure and list traits for selecting replacement sows. He'll also teach the do's and don'ts of artificial insemination and breeding.

Bob Owen, with his parents, Bill and Karen Owen, operates North Iowa Boar Stud in Riceville. Bob comes from a long line of swine breeders; his family started breeding Durocs in the 1930s. He's the owner of a 15-head purebred sow herd, and produces replacement breeding stock. Bob also works part-time for James Frantzen at Riverside Feeds.

Separating Science From Pseudoscience

At some point in our lives, we've been tricked into spending time and money on something that didn't pan out. Fortunately, there are some questions we can ask to protect ourselves from being bamboozled. Kathy and Rachel will demonstrate how asking these questions can protect you and help you make sound decisions, using examples of products and services being sold to farmers and ranchers.

Kathy Voth is best known for using animal behavior principles to develop a method of teaching cows (and other livestock) to eat weeds, reducing costs and increasing forage for farmers and ranchers. Her background includes

SATURDAY SESSION DESCRIPTIONS

12 years with the Bureau of Land Management working with ranchers, university researchers and agency staff to develop solutions that help communities live sustainably in their environment. With Rachel Gilker, she publishes "On Pasture," a weekly online grazing magazine serving 100,000 readers a month.

Rachel Gilker earned her M.S. and Ph.D. in agronomy and soil science at the University of Maryland after serving in the Peace Corps in Niger. She spent more than a decade conducting on-farm research with, and offering technical assistance to, grass farmers in Maryland and Vermont. In 2013, Rachel and Kathy Voth began publishing "On Pasture," a weekly online magazine.

Q&A: Hiring Migrant and Seasonal Workers and Year-Round Employees

Have questions about hiring walking crews, harvesters, seasonal workers or year-round farm employees? Join this session to get your questions answered.

Melissa Garcia is the monitor advocate for the state of Iowa. She works with a team of outreach specialists across the state to supply migrant and seasonal farm workers with information about available employment inside and outside of agriculture. She works with agricultural employers in all stages of the hiring process to fill their seasonal workforce needs.

Amy Beller is the registered apprenticeship program coordinator for Iowa Workforce Development. Amy works with a team of business service members across the state to provide business information about creating and registering their Registered Apprenticeship Programs with the U.S. Department of Labor. She also assists job seekers who are interested in becoming a Registered Apprentice.

◀ SESSION 2 ▶ 10 – 11:10 A.M.

Using the SmartMix Calculator to Develop Good Cover Crop Mixes

CCAs: 1.0 CEU credit approved – Crop Management

Attend this session for an inside and in-depth look at the industry's No. 1 cover crop calculator. Keith will demonstrate how the newest version of the SmartMix calculator works, explain the logic and thought processes that went into its development and show how you can use it to select the most appropriate species for your next cover crop mix.

Keith Berns combines 20 years of no-till farming with 10 years of teaching about agriculture and computers. He also co-owns and operates Green Cover Seed, one of the major cover crop seed providers and educators in the U.S. Through Green Cover Seed, Keith has experimented with over 100 different cover crop types and hundreds of mixes. Keith also developed the SmartMix Calculator, one of the most widely used cover crop selection tools on the internet.

Balancing Quality of Life and Direct Marketing by Crunching Numbers

After 20 years of direct marketing, the Cory family began questioning their quality of life and wondered if they were really making money from direct markets. Tom "put a pencil to their feelings" and discovered astounding results. Tom will discuss home delivery, restaurants, grocery stores, farmers markets, ethnic on-farm butchering, and farm pickup in relation to profits and quality of life. You'll leave pondering your own journey as a direct-marketer.

Tom Cory grew up 3 miles from his home in rural Elkhart. He purchased a farm from his relatives in 1980 just before the farm crisis. His family lives on a Century Farm and their grazing farm is also a Century Farm. Tom taught high school agriculture for many years and Mary homeschools their children.

Making Your Planter Ready for Next Year

Maintaining your planter is important in achieving optimum yield potential. But this practice is often overlooked or not always prioritized in the busy times before and during planting season. Randy will explain how basic planter upkeep and maintenance pays off by ensuring seed placement and singulation, and why these planter performance characteristics are vital to crop performance.

Randy Peterson is a product specialist with Agco Corp. He focuses on Fendt and Massey Ferguson tractors, Sunflower tillage tools and White planters. Randy has been in the business almost 40 years servicing areas of Wisconsin, Nebraska, Iowa and southeast Minnesota.

Learning From On-Farm Research: Horticulture

Through Practical Farmers of Iowa's Cooperators' Program, fruit and vegetable farmers have designed and completed projects related to crop varieties, cover crops, weed control, high tunnel production, trellising, pollinators and more. Join farmer-researchers Rob and Carmen to discuss what they've learned from their research successes and failures, and how the research process impacts their farms. Liz will share how the program works and how you can get involved.

Carmen Black operates SunDog Farm and Local Harvest CSA near Solon. She raises vegetables for 200 families, and raises a small flock of sheep. She began participating in 2015, and has now completed four projects.

Rob Faux and his wife, Tammy, operate Genuine Faux Farm, a small-scale CSA and poultry operation near Tripoli. Since 2009, Rob and Tammy have completed 16 research projects with Practical Farmers.

Liz Kolbe is the horticulture coordinator for Practical Farmers of Iowa. Her work includes facilitating the fruit and vegetable research in the Cooperators' Program, and planning field days, workshops and conference sessions.

(Continued on pg. 28 →)

SATURDAY SESSION DESCRIPTIONS

Iowa Author Panel: Reviving Culture in Agriculture

Farmers and non-farmers alike have opportunities beyond their purchasing practices to help local farms thrive across the Iowa landscape. Three Iowa authors have spent extensive time researching the challenges local foods and farms face in Iowa, and will share their insights for developing a vibrant Iowa food system rooted in culture and community.

Susan Futrell has spent over 30 years working in sustainable food distribution, including more than a decade with apple growers in the Northeast as marketing director for non-profit Red Tomato. Her new book *"Good Apples: Behind Every Bite,"* digs into the apple industry to better understand how we as citizens and consumers can sustain the farms that provide food for our communities.

Brandi Janssen is a researcher and advocate for local food systems, as well as the director of Iowa's Center for Agricultural Safety and Health (I-CASH). She is the author of *"Making Local Food Work: The Challenges and Opportunities of Today's Small Farmers,"* a book that uncovers the complex realities of building a healthy local food system.

Mary Swander is the poet laureate of Iowa, the artistic director of Swander Woman Productions and the executive director of AgArts, a non-profit designed to imagine and promote healthy food systems through the arts. Among her works is *"Map of My Kingdom,"* a play commissioned by Practical Farmers of Iowa that tackles the critical issue of land transition.

Teaching Livestock to Eat Weeds

Worried about weeds in your pastures? Don't be. It turns out weeds are very nutritious and livestock can learn to eat them. Kathy will share what scientists have discovered about how animals choose food, and how she uses this info to train cows to eat weeds in just seven hours spread over eight days. When you leave this session, you'll have everything you need to train your livestock to be weed eaters.

Kathy Voth is best known for using animal behavior principles to develop a method to teach cows (and other livestock) to eat weeds, reducing costs and increasing forage for farmers and ranchers. Her background includes 12 years with the Bureau of Land Management working with ranchers, university researchers and agency staff to develop solutions that help communities live sustainably in their environment. With Rachel Gilker, she publishes *"On Pasture,"* a weekly online grazing magazine serving 100,000 readers a month.

Winter Vegetable Production

Winter growing can be a highly profitable part of your farm plan. Michael will cover the principles of winter production, structures needed for winter production, how to plan successions to ensure winter-long harvests, and tips for preventing disease and pests in winter production systems.

Michael Kilpatrick and his brother, Philip, started Kilpatrick Family Farm in Middle Granville, New York, in 2005. They grew the farm to over 500 acres, with 15 acres in field vegetable production rotated on 50 tillable acres; 100 acres of pasture for layers, broilers and turkeys; and 350 acres of woodlot. Products were sold to a 250-member CSA, farmers markets,

co-ops, restaurants, institutional buyers and wholesale. The farm pushed the boundaries in winter production and season extension, and created a highly profitable business model. In 2015, Michael and his family moved to Ohio, where Michael directs his passion for farming toward helping other farmers become more efficient, productive, sustainable and profitable.

Q&A with James Rebanks

Continue conversations on sheep production and farming in the context of wider social, cultural and economic systems with James.

James Rebanks is a shepherd in the mountains of northern England. He lives and works on the farm his family has worked for over six centuries. He farms native Herdwick and Swaledale sheep, and the British cattle breed called Blue Greys. His farm's acres are in permanent pasture and hay meadows, and he specializes in raising high-value breeding stock.

◀ SESSION 3 ▶
1 – 2:10 P.M.

Pragmatic Approaches to Sustainability and Profitability

Whilden will share experiences from his family farm's journey to increase profitability and environmental stewardship through crop diversity, precision agriculture and the constant search for niche markets.

Whilden Hughes works on his family's parallel production (organic and conventional) farm in Rock County, Wisconsin. He and his family grow corn, soybeans, wheat, rye, oats, vegetable crops, sweet corn, green beans, lima beans and other specialty crops for niche markets. In addition to his love for farming, he is also passionate about being a good steward of the land and learning about new technologies for the farm.

Learning From On-Farm Research: Field Crops

CCAs: 1.0 CEU credit approved – Crop Management

The Cooperators' Program is Practical Farmers of Iowa's vehicle for conducting on-farm research. Come learn about the research design process from Stefan and hear from two cooperators who have been conducting research on cover crops. Tim will share details of his trial investigating cover crop termination date and nitrogen fertilizer strategies ahead of corn. Jack will discuss his recent work on interseeding cover crops into corn.

Tim Sieren, and his wife, Ethel, run Green Iron Farms, a diversified crop and livestock farm near Keota. Since joining the Cooperators' Program in 2013, Tim has been conducting trials on cover crops, green manures and small grains.

Jack Boyer and his wife, Marion, are lifetime members of Practical Farmers of Iowa. They raise corn, seed corn, soybeans, cereal rye and cover crops near Reinbeck. Jack joined the Cooperators' Program in 2014, focusing primarily on optimizing his farm's cover crops.

Stefan Gailans is Practical Farmers' research and field crops director. His primary responsibility is to manage the Cooperators' Program. He also plans field days, conference sessions and workshops for Practical Farmers' field crops program.

SATURDAY SESSION DESCRIPTIONS

Off-Target Movement: Can Herbicides Be Kept in Place?

CCAs: 1.0 CEU credit approved – Integrated Pest Management

Herbicides are the backbone of weed management for conventional farmers. In 2017, the Iowa Department of Agriculture and Land Stewardship received a record 200 complaints of pesticide misuse. The discussion will focus on changes in herbicide use patterns, factors that influence off-target movement and concerns about increased Dicamba use.

Bob Hartzler is an agronomy professor at ISU. His primary responsibilities are weed science extension and teaching. A native of Indiana, Dr. Hartzler has been with ISU Extension since 1982.

Expanding Operations to Add Beef Cattle

Before adding an enterprise to your existing operation, it pays to explore all factors before going “all in.” Join Matthew and Lori as they share their planning process before adding beef cattle to their vegetable and poultry enterprises. Joe will coach Matthew and Lori to help them make the right decision for their business and their family.

Matthew and Lori Wiese own and operate Heirloom Farm near Earlham. Since 2015, they have been raising vegetables for their CSA members, as well as producing eggs and broiler chickens that they sell directly to consumers.

Joe Sellers is the livestock field specialist for ISU, specializing in beef production.

Better Food, Farm and Conservation Policies Through Involvement

Climate change, water quality, soil degradation, rural decline – Iowans are facing many issues affecting the future of our landscapes and our communities. Fortunately, farmers and non-farmers in Practical Farmers’ network see a path toward an Iowa with vibrant rural communities and diversified farms. Two members will share ideas on how to engage your community. Come join the discussion to help shape policy for a healthier Iowa.

Kamyar Enshayan was a 2008 recipient of PFI’s Sustainable Agriculture Achievement Award; he directs the University of Northern Iowa’s Center for Energy & Environmental Education, and has been a voice for better care of the land we share in Iowa.

Anna Johnson is a policy program associate at the Center for Rural Affairs, where she empowers farmers and rural community members to play an active role in shaping policy issues related to farming and conservation.

Indoor Mushroom Production and Marketing

Oyster mushrooms are a delicious addition to a farm’s offerings. When grown indoors, they are consistently productive and profitable. Tyson will share his expertise with setting up an efficient and cost-effective grow room, and producing and marketing mushrooms.

Tyson Allchin grows mushrooms year-round on his farm, Allchin Acres, near Columbus Junction. He primarily sells oyster mushrooms to grocery stores and restaurants, but has also grown lion’s mane, shiitake and pioppino. Tyson also prepares and sells inoculated fruiting blocks to other growers.

Livestock Guardian Dogs 101

Livestock guard dogs play a key role on farms with livestock. Angela and Jason have been breeding and training guard dogs for four years. Join our discussion on how to choose the right guardian dog for your farming operation and family needs. Angela will discuss breeds; training; normal guardian behavior; and using dogs to work with goats, poultry, cattle and pigs. She’ll also speak on using a llama for predator protection. Bring your questions!

Angela Johnson owns and operates Lucky George Farm, with her husband, Jason, near Derby. Lucky George Farm is a diversified livestock farm specializing in the conservation of Large Black pigs and other British-breed livestock. The Johnsons are the only American members of the British Pig Association and have extensive hands-on experience raising livestock guardian dogs for low-impact farmers across the U.S. Dogs born at Lucky George Farm now live on farms across the country, and throughout their home state of Iowa.

Q&A: Strengthening and Recovery With Tony Gallo

Tony will answer audience questions about proper form, strengthening, and injury prevention and recovery.

Tony Gallo is a senior physical therapist at Grinnell Regional Medical Center, where he has practiced since 1988. In addition to injury recovery and orthopedic care, he specializes in athletic performance and sports medicine.

◀ SESSION 4 ▶

2:30 – 3:40 P.M.

Using Tea Bags to Assess Soil: A Low-Cost Approach?

CCAs: 1.0 CEU credit approved – Nutrient Management

Marshall will present some preliminary data from a 2017 study using decomposition of common types of tea as an inexpensive, yet scientifically robust way to measure soil health. This study included over a dozen PFI farms across Iowa. He will present major trends across soil types and management treatments, and also whether the tea decomposition seems to be a good indicator of soil health.

Marshall McDaniell is an assistant professor in soil-plant interactions at ISU. Soils and plants are in a give-and-take relationship with carbon and nutrients. The McDaniel Research Group studies how this relationship is affected by management and the environment to seek an understanding of what enhances soil-plant synergy, soil health and agroecosystem sustainability.

(Continued on pg. 30 →)

SATURDAY SESSION DESCRIPTIONS

Cover Crops and Crop Rotations in Organic Systems Without Livestock

Using no-till, crimped cereal rye ahead of soybeans can make organic weed control a simple matter. Mark will describe the crop rotations he employs and the cover crop species he plants ahead of each crop in his organic system. He will also discuss the crop, cover crop and tillage systems he uses for the highly erodible land on his farm in south-central Wisconsin.

Mark Doudlah raises corn, soybeans and wheat on Doudlah Farms, a certified organic farm near Cooksville, Wisconsin. He is currently the fourth generation to farm his family's land. Mark and his wife, Lucy, have an organic cropping system on 1,750 acres using cover crops. He has integrated 15-inch row spacing in all crops with controlled traffic tram lanes. He was also an early adopter of one-pass no-till and minimum-tillage systems.

GAP, FSMA and Post-Harvest Handling for Food Safety

With the advent of Good Agricultural Practices, and now the Food Safety Modernization Act, growers have a lot to understand and implement when it comes to food safety. Michael will unpack the regulation, discuss areas where farmers should focus and show easy ways to track the required information, including new software on the market.

Michael Kilpatrick and his brother, Philip, started Kilpatrick Family Farm in Middle Granville, New York, in 2005. They grew the farm to over 500 acres, with 15 acres in field vegetable production rotated on 50 tillable acres; 100 acres of pasture for layers, broilers and turkeys; and 350 acres of woodlot. Products were sold to a 250-member CSA, farmers markets, co-ops, restaurants, institutional buyers and wholesale. The farm pushed the boundaries in winter production and season extension, and created a highly profitable business model. In 2015, Michael and his family moved to Ohio, where Michael directs his passion for farming toward helping other farmers become more efficient, productive, sustainable and profitable.

Estate Planning With Farming and Non-Farming Heirs

Bonnie and Vance have turned over the day-to-day management of their grazing dairy operation to son Olaf and are now thinking about him and their non-farming children in their estate planning. Hear their story and their plans, and listen to feedback from attorney Rachel about other issues and strategies they (and you) might consider.

Bonnie and Vance Haugen are PFI members from Springside Farm in Canton, Minnesota.

Rachel Dahl, a former farm kid, specializes in estate and farm transition planning for Hellmuth & Johnson law firm in Minneapolis.

Q&A With Kathy Voth and Rachel Gilker

Come with your grazing questions! "On Pasture" readers will have the chance to speak in-person with publishers Kathy and Rachel.

Kathy Voth is best known for using animal behavior principles to develop a method of teaching cows (and other livestock) to eat weeds, reducing costs and increasing forage for farmers and ranchers. Her background includes 12 years with the Bureau of Land Management working with ranchers, university researchers and agency staff to develop solutions that help communities live sustainably in their environment. With Rachel Gilker, she publishes "On Pasture," a weekly online grazing magazine serving 100,000 readers a month.

Rachel Gilker earned her M.S. and Ph.D. in agronomy and soil science at the University of Maryland after serving in the Peace Corps in Niger. She spent more than a decade conducting on-farm research with, and offering technical assistance to, grass farmers in Maryland and Vermont. In 2013, Rachel and Kathy Voth began publishing "On Pasture," a weekly online magazine.

Foraging for Market: Morels and Greens

Mushrooms are an exciting hunt, but foraged wild greens can also add diversity and nutrition to your market table and kitchen. Join Jill and Sarah to pick up practical information about foraging, marketing and preparing "the best of the best" wild edibles. They will cover foraged greens and morels, as well as a few other safe and delicious wild mushrooms.

Jill Beebout farms at Blue Gate Farm with her husband, Sean Skeeahan. They steward 40 acres of family land near Chariton, where they raise Certified Naturally Grown produce, laying hens, honey bees, hay and alpacas; their marketing is done primarily through their CSA and farmers markets.

Sarah Foltz Jordan works as the Xerces Society pollinator conservation specialist for the Great Lakes Region. Based in Minnesota, Sarah also farms organic fruits and vegetables, and is an avid mushroom and plant forager.

Land Access: Pitfalls and Potential

Whether you've identified the land you want to farm on or are just starting your search, this session will share tools and best practices to help you in the process. Kate and Brett will cover assessing the farmability of a piece of land, whether buying or leasing is the best option for you, resources for finding land and what to know about financing. You'll also find out snags to avoid and issues to anticipate.

Kate Edwards is a CSA farmer near Iowa City, growing food for 200 families each week of the growing season. Kate is entering her eighth year of farming.

Brett Olson is co-founder and creative director at Renewing the Countryside. His work focuses on local food systems, entrepreneurship and community development in rural areas. Brett helps design and develop programming on issues including farm transitions, farmland access, sustainable tourism and farm-to-table.

SATURDAY SESSION DESCRIPTIONS

More Sunlight to Corn = Space for Cover, Companion and Cash Crops

Bob will discuss his on-farm research covering non-traditional corn row spacing to support strip intercropping, cover crops and companion crops, as well as to provide a traffic pathway (tramline) for late season treatments. The yield of individual corn rows is higher due to greater sunlight access and a higher plant population. These sunlight openings proffer an alternate way to use the open spaces. Several will be discussed in this presentation and the ensuing discussion.

Bob Recker grew up on a farm in eastern Iowa and worked as a product engineer at John Deere until his retirement in 2008. He formed Cedar Valley Innovation LLC to “pay back” the farmers of the world for supporting him and his family for 41 years at John Deere. He uses his own modified equipment to conduct test plots and experiments on commercial growers’ farms, with a focus on high-resolution yield data and heavy use of aerial and in-field imagery.

◀ SESSION 5 ▶
4 – 5:10 P.M.

Pack Shed and Post-Harvest Efficiency

On a vegetable farm, up to 50 percent of labor is spent after the crop is grown. In this session Michael will dive into principles behind a well-designed facility, tools and equipment to make the job easier, and systems that speed up the process and reduce stress levels. He will share washing shed designs and explain why they work (or don’t), and help you figure out what makes sense for your farm.

Michael Kilpatrick and his brother, Philip, started Kilpatrick Family Farm in Middle Granville, New York, in 2005. They grew the farm to over 500 acres, with 15 acres in field vegetable production rotated on 50 tillable acres; 100 acres of pasture for layers, broilers and turkeys; and 350 acres of woodlot. Products were sold to a 250-member CSA, farmers markets, co-ops, restaurants, institutional buyers and wholesale. The farm pushed the boundaries in winter production and season extension, and created a highly profitable business model. In 2015, Michael and his family moved to Ohio, where Michael directs his passion for farming toward helping other farmers become more efficient, productive, sustainable and profitable.

Learning From On-Farm Research: Livestock

CCAs: 1.0 CEU credit approved – Crop Management

Through PFI’s Cooperators’ Program, livestock farmers have designed and completed projects related to forage production and grazing, feed efficiency, milk production, meat quality and animal health. Join farmer-researchers Tom and Bruce to discuss recent swine and cattle trials: what they’ve learned from their research successes and failures, and how the research process impacts their farms. Meghan will share details about the program and how you can get involved.

Bruce Carney, and his wife, Connie, are lifetime members of Practical Farmers of Iowa. They operate a diversified, pastured livestock farm near Maxwell, specializing in grass-finished beef. Bruce joined the Cooperators’ Program in 2009, focusing on optimizing forage production and animal gains. Bruce is currently researching cover crop grazing for soil health and grazing for bird habitat.

Tom Frantzen and his wife, Irene, are lifetime members of Practical Farmers of Iowa and have been conducting on-farm research since 1988. They operate an organic crop and livestock farm near New Hampton. The Frantzens have conducted trials to reduce inputs, increase crop yields and feed pigs alternative rations. Tom is currently researching pelleting small grains and feeding hybrid rye instead of corn.

Meghan Filbert is Practical Farmers’ livestock coordinator. She manages the on-farm livestock research trials and is responsible for planning all the livestock programs – field days, conference sessions and workshops.

Growing Better Brussels Sprouts

Brussels sprouts have become a culinary darling, but their long growing season and unusual growing pattern are challenging for many growers. Andrew and Ajay will help attendees navigate these challenges and discuss their own best practices for successful Brussels sprouts.

Ajay Nair is an assistant professor at ISU working on sustainable vegetable production.

Andrew Dunham and his wife, Melissa, operate Grinnell Heritage Farm in Grinnell. He is a fifth-generation farmer, raising 25 acres of organic vegetables, herbs and flowers.

Leaving Your Legacy

Seventy percent of U.S. farmland will transfer to the next generation within 20 years, yet only 11 percent of family farms have a transition plan in place. Transition planning is critical to successful transfer and retirement. The right plan can help you leave the legacy you intend! In this session, two financial planning experts will preview the multitude of options available to you, including charitable gift annuities and life insurance.

Ashley Shafer is a financial advisor for Morgan Stanley and has more than a decade of charitable and estate planning experience.

Steve Hamilton is director of Nationwide’s Advanced Consulting Group. He was raised on a farm in central Iowa, and has over 30 years of experience in the financial services industry, specializing in farm transition planning as well as estate planning, business succession, and IRA and annuity distribution options.

(Continued on pg. 32 →)

SATURDAY SESSION DESCRIPTIONS

Landowners: Are Weed-Free Fields the Best Your Farm Can Be?

Weed-free fields are often seen as signs that a farm is well-managed – but we know that soil erosion and nitrate leaching are problems for much of Iowa's farmland. In fact, counties where much of the land is cash-rented have very few acres in cover crops and minimal in-field conservation practices. Three experienced Practical Farmers members will answer your questions about how landowners can do more with their farm.

Lee Tesdell farms near Slater on a Century Farm that has been in his family since 1884. On a small scale, he raises cross-bred sheep and layer hens. Lee participates in the Conservation Reserve Program, Regional Conservation Partnership Program and the Environmental Quality Incentives Program. He rents his crop ground to Mike Helland.

Mike Helland operates a Heritage Farm in Huxley that has been in his family since 1861. He has no-tilled beans for 23 years, one-tills his corn and integrates livestock on the farm. Last year, he raised 500 acres of cereal rye for pasture and hay for cattle.

Gary Guthrie, "The Carrot King," has farmed fresh vegetables at Growing Harmony Farm near Nevada for more than 20 years. A lifetime member of Practical Farmers of Iowa, he has been active in hosting conservation- and production-focused field days. Gary works with his tenant, Danny Harrison, to care for his rented farmland.

Livestock Insurance: Identifying Risks and Risk Management Tools

Ryan enrolled in livestock insurance policies to manage his farm's risks. In this session, he will discuss the process of assessing his on-farm risk and how he chose the right insurance program – including some negative experiences he has endured. Rodney Sebastian, with USDA Risk Management Agency, will answer specific questions from the audience about current insurance programs and risk assessment tools.

Ryan Marquardt and his wife, Janice, own Wild Rose Pastures near Van Meter. They raise chicken, turkey, beef, and eggs for Central Iowa customers using sustainable practices.

Rodney Sebastian grew up on a farm near Spencer, Iowa. He has worked with USDA for more than 30 years, first with the Ag Marketing Service in Dairy Programs, and the past 15 years with RMA.

Innovations in Weed Control

More farmers are expressing interest in new tools for mechanical weed control. Leonard Mol, managing director of Steketee in The Netherlands, and Hans Bishop, 2017 MOSES Farmer of the Year from PrairiErth Farm in Atlanta, Illinois, will speak about advances in mechanical weed control technology. Hans and his family use Steketee weed control tools on their diversified organic farm that includes corn, soybeans, oats, wheat, livestock, forages, vegetables, fruit and flowers.

Leonard Mol is managing director of Steketee, a farm implement company based in The Netherlands that has been developing weeding and soil cultivation machines since 1969.

Hans Bishop and his family raise organic corn, soybeans, oats, wheat, livestock, forages, vegetables, fruits and flowers at PrairiErth Farm near Atlanta, Illinois.

Soil Health: Continuous Testing, Continual Learning

CCAs: 1.0 CEU credit approved – Nutrient Management

Mitchell and his team at Continuum Ag are addressing soil health head-on in 14 states and three countries. Using continuous soil testing and results from over 1,000 soil health tests, data is helping farmers logistically and economically improve soil health. Learn how advanced testing procedures, including the Haney Soil Health Test, can paint a picture of your soil health while giving you the tools needed to improve your operation.

Mitchell Hora is a southeast Iowa farmer and a recent graduate of Iowa State University. He started Continuum Ag in the fall of 2015 as a consulting and data management company, focused on soil health. Today, Continuum Ag works with farmers, consultants and agribusinesses around the world to advance sustainable agriculture by quantifying and improving soil health.



THANK YOU
FOR COMING



NOTES





NOTES





NOTES





PRACTICAL FARMERS OF IOWA ANNUAL CONFERENCE

Practical Farmers of Iowa strengthens farms and communities through farmer-led investigation and information-sharing. Our values include: welcoming everyone; creativity, collaboration and community; viable farms now and for future generations; and stewardship and ecology. Founded in 1985, farmers in our network raise corn, soybeans, livestock, hay, fruits and vegetables, and more.

To learn more, visit practicalfarmers.org.

2018
REVIVAL