



2024

# Annual Conference



January 19-20, 2024 | Des Moines, Iowa





# *Join us for our* **2024 PFI ANNUAL CONFERENCE!**

January 19-20, 2024  
Short Courses: January 18-19, 2024



## **Highlights include:**

- 65 sessions featuring over 120 speakers
- Over 90 sponsors and exhibitors
- Pre-conference short courses
- Storytelling
- PFI Dinner and cocktails
- And more!

## **NEW 2024 LOCATION!**

**Community Choice Convention Center at the Iowa Events Center**  
**833 5<sup>th</sup> Avenue | Des Moines, IA**





# REGISTER TODAY!

There are three ways to register for PFI's 2024 Annual Conference:



## REGISTER BY MAIL

Registration details are on page 14 of this brochure. Fill out the registration forms, tear out the perforated page and mail it to the PFI office at this address:

*Practical Farmers of Iowa  
1615 Golden Aspen Drive, Suite 101  
Ames, IA 50010*



## REGISTER ONLINE

Visit our website to register online.  
*[practicalfarmers.org/annual-conference](https://practicalfarmers.org/annual-conference)*



## REGISTER BY PHONE

Questions? Need assistance with registration? We are here to help!  
Call the PFI office at *(515) 232-5661*.

## PRE-REGISTRATION INFORMATION

*Pre-registrations must be received by Thursday, Jan. 11, 2024. After that date, registration rates increase and all registrations are walk-in only. No refunds will be given after Jan. 11. All refunds prior to that date will be charged an \$8 processing fee.*

# CONFERENCE SCHEDULE

## • THURSDAY, JAN. 18

12:30-1:30 p.m.	Short Courses Check-In
1:30-6 p.m.	Short Courses

## • FRIDAY, JAN. 19

8-11 a.m.	Short Courses Continue
11 a.m.	Registration Opens
	Exhibit Hall Opens
11 a.m.-Noon	Lunch ( <i>Short Course &amp; Exhibitors Only</i> )
12:30-1:30 p.m.	Concurrent Session 1
2-3 p.m.	Concurrent Session 2
3:30-4:30 p.m.	Concurrent Session 3
4:45-5:30 p.m.	PFI Business Meeting Award Presentation
5:30-6:30 p.m.	Keynote Address
6:30-7:30 p.m.	Cocktail Hour
7:30-11 p.m.	PFI Dinner sponsored by ADM re:generations

## • SATURDAY, JAN. 20

7:30 a.m.	Breakfast, sponsored by Niman Ranch, & Exhibit Hall
9-10 a.m.	Concurrent Session 1
10:30-11:30 a.m.	Concurrent Session 2
Noon-1:30 p.m.	Lunch & Exhibit Hall
1:30-2:30 p.m.	Concurrent Session 3
2:45-3:45 p.m.	Concurrent Session 4
4-5:15 p.m.	Storytelling

## REGISTRATION IS OPEN!

Register by Dec. 8 to be entered to

**WIN TWO FREE NIGHTS AT THE HILTON  
DURING THE CONFERENCE!**



*Registration information on page 14.*



## About the PFI Annual Conference

Since our founding, the annual conference has been a keystone event for sharing knowledge, building connections and celebrating agriculture in Iowa (and good food!). As our conference grows to over 1,000 attendees, we are pleased to offer three pre-conference short courses, 60-plus farmer-led sessions on a wide variety of agricultural topics, 80-plus exhibitors, locally sourced meals and a spirit of curiosity and community. We hope to see you there!

## About Practical Farmers of Iowa

Practical Farmers of Iowa is a nonprofit, founded in 1985 as an organization for farmers, led by farmers. We are rooted firmly in farmer-to-farmer knowledge-sharing, network-building and farmer-led research. But we have also expanded our work in what we call “farm viability” – offering multiple cost-share opportunities, farm business coaching programs, landowner and farm transition support and first-generation farmer mentoring.

## PFI’s Vision

An Iowa with healthy soil, healthy food, clean air, clean water, resilient farms and vibrant communities.

## PFI’s Values

- Welcoming everyone
- Farmers leading the exchange of experience and knowledge
- Curiosity, creativity, collaboration and community
- Resilient farms now and for future generations
- Stewardship of land and resources





# There's something for everyone at the PFI Annual Conference

Choose from over 60 concurrent breakout sessions on Friday and Saturday. Focus on your farm's enterprises, or branch out to learn something new!

## Topics include:

Conventional and organic cover crops and small grains

Soil health practices for corn and soybeans

Pasture-based livestock

Crop-livestock systems

Vegetables and fruit production and marketing

Precision conservation and on-farm habitat

Landowner resources and farmland access

Urban farming

Farmer collaborations

And more...

## 2024 Conference Speakers

### Bios and sessions at [practicalfarmers.org/annual-conference](https://practicalfarmers.org/annual-conference)

**Aaron Blyth** – Latino Economic Development Center

**Ai Wen** – University of Northern Iowa

**Ajay Nair** – Iowa State University

**Alex Schaffer** – Iowa Soybean Association

**Alexis Barnes** – South Dakota State University

**Alfred Matiyabo** – Africando Farm

**Amber Mohr** – Forktail Farm

**Andrew Miller** – A Hilltop Homestead

**Andy Linder** – Linder Family Farms

**Angela Tedesco** – Turtle Farm (retired)

**Anne Carey** – Iowa State University

**Arnulfo Perrera** – Stacyville Poultry Processing

**Aubrey McEnroe** – University of Iowa

**Barbara Kraus** – Canoe Creek Produce

**Benji Deal** – Deal's Orchard

**Beth Hoffman** – Whippoorwill Creek Farm

**Bill Frederick** – Iowa Cover Crop

**Bonnie Warndahl** – Winnowburrow Farm & Florals

**Brent Larson** – Sunderman Farm Management

**Bruce Willems** – Farmer

**Bryce Irlbeck** – AgriSecure

**Caleb Akin** – A&W Farms

**Carlos Williams** – Sundog Farm

**Carly Strauser** – Iowa State University

**Chelsea Ferrie** – Practical Farmers of Iowa

**Chris Deal** – Deal's Orchard

**Clara Muggli-Toyloy** – Oak & Olive Flowers

**Dan Fillius** – Iowa State University

**Dana Jokela** – Sign Valley Farm

**Danelle Myer** – One Farm





*Ethan Book*



*Noreen Thomas*



*Nick Smith*



*Nicole Jonas*



*Jude Becker*

**Daniel Sheetz** – Barred Owl Organics

**DaQuan Campbell** – We Arose

**Darrick Weissenfluh** – U.S. Fish & Wildlife Service

**David Gossman** – Hidden Bluffs Farm

**David Mincer** – Mincer Farms

**Dirk & Kjersten Oudman** – Blue Sky Vegetable Co.

**Doan Schmitz** – Iowa Crop Improvement Association

**Doris Montag** – Curator of Historical Collections

**Eric Jellum** – Jellum Farm

**Esther Arkfeld** – De Melkerij Dairy

**Ethan Book** – Crooked Gap Farm

**Global Greens Farmers**

**Grace Yi** – Practical Farmers of Iowa

**Greg Judy** – Green Pastures Farm

**Hannah Breckbill** – Humble Hands Harvest

**Hannah Scates Kettler & Kurtis Kettler** – Minerva's Meadow

**Hannah Voyer** – South Dakota State University

**Isaac Hooley** – University of Iowa

**Jack Boyer** – J Boyer Farms, Inc.

**Jamey Meyer** – Iowa Department of Agriculture & Land Stewardship

**Jason Jones** – Star Grass Farm

**Javier Garcia Hernandez** – Agua Gorda Cooperative

**Jennifer Ripp** – Savanna Institute

**Jill Beebout** – Blue Gate Farm

**Joe Klingelhutz** – Land Access Navigator

**Joel Gruver** – Western Illinois University

**John Wesselius** – The Cornucopia

**Jon Bakehouse** – Maple Edge Farm

**Jordan & Whitney Clasen** – Grade A Gardens

**Jordan Scheibel** – Middle Way Farm

**Josh Nelson** – Cardinal Creek Farm

**Juan Arbelaez** – Cala Farm

**Jude Becker** – Becker Lane Organic

**Kate Edwards** – Wild Woods Farm

**Kate Solko** – Root to Rise Farm

**Kathryn Ashley-Wright** – Ewetopia Farm

**Katie Flinn** – Milk & Honey Orchard and Apiary

**Katie Prochaska** – River Root Farm

**Keaton Krueger** – Beaver Creek Acres

**Keith Berns** – Providence Farms, Green Cover Seed

**Kevin & Kendra Martin** – Holdfast Farmstead

**Kim Andersen** – Zihlman Family Farms and Blueberry Bottom

**Lee Goldsmith** – Native Legacy Nursery

**Louis Kemp** – Regenerative Agriculture Alliance

**Marcela Hurtado** – The Center for Worker Justice of Eastern Iowa

**Margaret Smith** – Ash Grove Farm, Albert Lea Seed

**Marshall McDaniel** – Iowa State University

**Martha McFarland** – Practical Farmers of Iowa

**Matt Liebman** – Iowa State University (Emeritus)

**Max Chavez** – Sunny Valley Vegetables

**Megan Booher** – Four Winds Hemp Farm

**Mike & Jodi Levine** – Fruit of Levine Farm

**Mollie Aronowitz** – Peoples Company

**Monika Owczarski** – Sweet Tooth Farm

**Morgan Jennings** – Practical Farmers of Iowa

**Nancy Brannaman** – White Oak Enterprises

**Natasha Wilson** – West Fork Farmstead

**Nick Helland** – Farmer

**Nick Smith** – Smith Farms

**Nicole Jonas** – Red Granite Farm

**Noah Wendt** – A&W Farms

**Noreen Thomas** – Doubting Thomas Farms

**Paul Mugge** – Farmer

**Peter Kerns** – Turkey River Farm

**Robyn Calvey** – Park Ridge Organics

**Rodrigo Cala** – Cala Farm

**Roger Wilcox** – Wilcox Farm

**Ruth McCabe** – Heartland Cooperative

**Sam Bennett** – Farmer

**Sarah Nizzi** – Xerces Society

**Scott Shriver** – Shriver Farms, LLC

**Sean Dengler** – Farmer

**Stennie Nelson** – Pheasants Forever

**Steve Strasheim** – Twisted River Farm

**Steven Hall** – University of Wisconsin-Madison

**Tim Youngquist** – Iowa State University

**Tom Cotter** – Cotter Farm

**Torray Wilson** – Seven W Farm



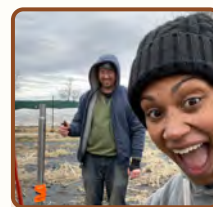
*Bill Frederick*



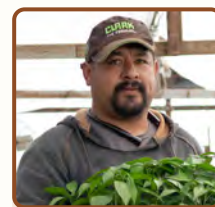
*Louis Kemp*



*Kate Solko*



*Hannah Scates Kettler  
& Kurtis Kettler*



*Rodrigo Cala*

# Pre-Conference Short Courses

Thursday, Jan. 18 | 1:30–6 p.m. CAAs: 4.5 CEU credits approved

Friday, Jan. 19 | 8–11 a.m. CAAs: 3 CEU credits approved

## • Soil Health and Fertility for Horticulture Production

Healthy soil is the foundation of productive cropping systems. For horticultural crops, the demands are diverse, but so are the opportunities. With this short course, take an intensive look with experts and practitioners at why soil health matters, how to measure it and tools to achieve it. You'll learn about:

- Essential soil health strategies for horticultural production
- Digging in with soil fertility planning and interpretation
- Tarping techniques from a panel of practitioners and researchers
- Incorporating annual and perennial living mulch on your farm – from the good and the bad to the “we’re not sure yet”
- Multispecies cover crops in vegetable production systems

### *Speakers*



*Ajay Nair*



*Alexis Barnes*



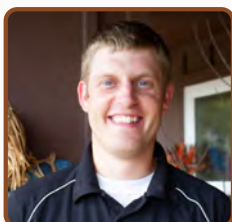
*Anne Carey*



*Benji Deal*



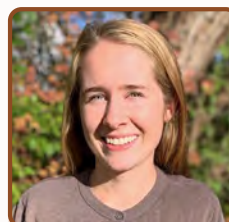
*Carly Strauser*



*Chris Deal*



*Hannah Breckbill*



*Hannah Voye*



*John Wesseliuss*



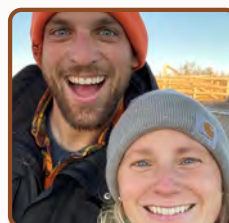
*Jordan & Whitney  
Clasen*



*Kate Edwards*



*Matt Liebman*



*Dirk & Kjersten  
Oudman*



*Robyn Calvey*



## • Grazing Intensive With Greg Judy

Back by popular demand! Come learn from Greg Judy in this grazing-focused workshop. Over years of trial and error, Greg has gained knowledge and tips about how to build a profitable grazing enterprise. This wide-ranging short course is an opportunity to hear him speak on the techniques that have led him to healthy soil, resilient adaptive grazing and financial security. You'll learn about:

- Drought management practices that may save your farm
- Building healthy soil and profit with planned grazing
- Advantages of multispecies grazing
- Economical water and fencing techniques
- Stockpiling forage for winter to reduce hay feeding
- Maximizing daily animal performance for high profits
- Tips for finding profitable grazing leases and working with landowners



## • Getting Started With Organic Transition

During this organic transition short course, a number of organic producers and experts will share their experiences and orient farmers interested in organic production to the ins and outs of transitioning field crops acres. You'll learn about:

- What to know about organic equipment and infrastructure
- Transition strategies and planning for organic field crops
- Thinking ahead for organic certification and record-keeping
- Farmer perspectives on marketing organic field crops
- Basic organic production strategies

### *Speakers*



*Bryce Irlbeck*



*Caleb Akin*



*Daniel Sheetz*



*Jamey Meyer*



*Margaret Smith*



*Noah Wendt*



*Paul Mugge*



*Scott Shriver*



*Tom Cotter*



Find short course speakers, bios and full session details at  
[practicalfarmers.org/annual-conference](http://practicalfarmers.org/annual-conference)



# Keynote Address

Friday, Jan. 19 | 5:30 p.m.

## Soil Health Makes Sense... But Does It Make Dollars?

### Keith Berns

There's no question that improving your soil's health can yield a host of benefits. Healthy soil can help prevent erosion, break up compaction, improve how water moves through soil and capture nitrogen. It can also hold more nutrients and make them more available to plants, and the soil health practice of cover crops can supplement grazing forage. It makes good agronomic sense to focus on soil health. But does it make financial sense?



Keith Berns, one of the cover crop pioneers over the past 15 years, will lay out the case and show the research on how soil health practices affect the bottom-line profitability of a farming operation. He'll discuss short-term and long-term benefits, as well as direct and indirect financial impacts of investing in healthier soil. Come find out if soil health makes both dollars and sense!

*Keith Berns farms with his family on 2,500 acres of irrigated and dryland ground in south-central Nebraska. The Bernses raise corn, soybeans, rye, triticale, peas, buckwheat and sunflowers and are completely no-till. In 2008, Keith co-founded Green Cover Seed with his brother Brian, and in 2012 he launched the SmartMix Calculator to help farmers select cover crop seed and build custom mixes.*

---

## Followed by a cocktail hour and the PFI Dinner

Keep the fun rolling! Following the keynote, we'll roll in the bar cart and set up the dinner service. Tickets (\$15) are required for the dinner, which will feature locally sourced ingredients.





# PFI Storytelling

Saturday, Jan. 20 | 4 p.m.

It's a tradition! To close out the conference on Saturday afternoon, all conference attendees will come together to hear true stories, performed live, from a selection of PFI farmers. If you enjoy bending your ear toward a lively, soberingly powerful or particularly well-narrated farmer tale, this storytelling event is for you.

*Grab a bag of popcorn on your way in!*



*Jill Beebout, Emcee*



*Nancy Brannaman*



*Sean Dengler*



*Ruth McCabe*



*Carlos Williams*

## STORY BOOTH

Friday, Jan. 19 | 12–4:30 p.m.

Saturday, Jan. 20 | 7:30 a.m.–3:30 p.m.



Have a story of your own to share? Want to record a memory from your farm? Look for the return of the PFI Story Booth! We'll be standing by to help record your story.



# Sessions at-a-Glance

Thursday, Jan. 18–Saturday, Jan. 20

THURSDAY & FRIDAY	FRIDAY	FRIDAY	FRIDAY	FRIDAY
Th: 1:30–6 p.m. & F: 8–11 a.m.	12:30–1:30 p.m.	2–3 p.m.	3:30–4:30 p.m.	4:45–6:30 p.m.
<b>SHORT COURSE:</b> Getting Started With Organic Transition	Producing and Marketing Waterfowl Eggs	Getting a Handle on Marketing Meat	Grass-Finishing Livestock With Perennial Pastures	<b>BUSINESS MEETING &amp; KEYNOTE ADDRESS</b>
<b>SHORT COURSE:</b> Grazing Intensive With Greg Judy	Beautiful Brassicas	Iowa's Raw Milk Bill Explained	<b>PANEL:</b> Writing From the Farm: An Orientation to Publishing a Book	
<b>SHORT COURSE:</b> Soil Health and Fertility for Horticulture Production	Exploring PFI's Field Crops Cost-Share and N-Rate Risk Protection Programs	<b>PANEL:</b> Introduction to Value-Added Products	Grass-Finishing Livestock With Perennial Pastures	
	Improving Weed Suppression and Reducing Herbicides With Cover Crops	<b>ROUNDTABLE:</b> Connecting Landowners and Beginning Farmers	<b>PANEL:</b> Trialing Biological Products on the Farm	
	On-Farm Research: Relay-Cropping Soybeans and Cereal Rye	Integrating Vegetable and Poultry Production	How Flex Leases Can Benefit Farm Tenants and Landowners	
	Diversified Vegetable Production With Global Greens	Top Considerations for Cover Crop Seed Production and Certification	Farming Before Tractors	
	<b>ROUNDTABLE:</b> Overcoming Landscape Challenges to Establish and Maintain Oxbows and Buffers	Planter Set-Up for Cover Crops and No-Till	Nature's Terrace: Prairie Strips as a Method of Soil and Nutrient Reduction	
	2023 Road T(h)rips: Pests and Diseases Around Iowa	Precision Conservation in Action: Increasing Farm Profits and Habitat Outcomes	<b>PANEL:</b> Listening to the Numbers: A Farmer Pivot Panel	
	Developing Wildlife Habitat With Grazing Practices	Rising Up: Increasing Community Food Access Through We Arose	Establishing and Managing Organic Blueberries	
	<b>MESA REDONDA:</b> ¿Por Dónde Empiezo?	Voces Latinas en Agricultura	Centro Para el Desarrollo Economico Latino	



SATURDAY	SATURDAY	SATURDAY	SATURDAY	SATURDAY
9-10 a.m.	10:30-11:30 a.m.	1:30-2:30 p.m.	2:45-3:45 p.m.	4-5:15 p.m.
<b>PANEL:</b> The Value of Grazing Covers	Entomology Where You Graze	Overwintering Honeybees	Pasturing Pigs in Woodlots	<b>PFI STORYTELLING</b>
<b>PANEL:</b> Looking for Land? Meet a Farmland Access Navigator	Storytelling to Reach Markets: The Anatomy of a Newsletter	<b>ROUNDTABLE:</b> How Are You Integrating Agroforestry Into Your Forage Chain?	<b>ROUNDTABLE:</b> Managing Grazing in a Drought	
Beyond the Farm: Growing Grains and Establishing Creative Partnerships	<b>LIGHTNING TALKS ROUND 1</b>	Ewetopia: Building a Wool Enterprise	<b>LIGHTNING TALKS ROUND 2</b>	
<b>ROUNDTABLE:</b> A Conversation on Implementing Soil Health Practices With Farmers and Landowners	Tips for Producing Hybrid Rye as Livestock Feed	Exploring Oat and Pea Varieties for Intercropping as Forage	<b>ROUNDTABLE:</b> The Gift of Grains: Sharing Ideas for Incorporating Food-Grade Grains in Daily Life	
Farmers Market 101	Reaping the Rewards of a Regenerative Year	<b>PANEL:</b> A Study in Sustainability: How Extended Rotations Affect Soil Health	Cover Crop Strategies Ahead of Corn	
<b>PANEL:</b> Q&A With Conference Keynote Keith Berns	<b>PANEL:</b> Supporting Urban Farms Through Pollinator Biodiversity	Sustainable Prairie and Timber Management on 400-Plus Acres	Stress Management in Agriculture: Coping With the Ups and Downs of Farm Life	
Let's Talk Habitat! PFI Introduces New Conservation Cost-Share Programs	Bringing Down the Cost of Season Extension With a Geothermal High Tunnel	<b>PANEL:</b> Special Ops for Specialty Crops: A Panel on Tracking Tasks and Managing Farm Operations	Looking at Native Bee Health in CRP: Assessing Establishment and Mid-Contract Management	
The Resilient CSA	<b>ROUNDTABLE:</b> Working With Labor: Be the Employer Workers Want	Pep Rally: Growing and Marketing Peppers	Piloting the Decorah Flower Hub: Collaboration and Community Instead of Competition	
Produccion Avicola Regenerativa con RAA	Acesso de Terrenos: Consejos de los Navegadores	Vendiendo en Mercados Locales	Apicultura para Principiantes	

**SAVE POSTAGE AND REGISTER ONLINE!**

[practicalfarmers.org/annual-conference](https://practicalfarmers.org/annual-conference)  
or by calling the office at (515) 232-5661.



# Conference Sponsors

Thank you to our generous sponsors!

## Level A Sponsors



GRAIN MILLERS



Hosting the Friday PFI Dinner:

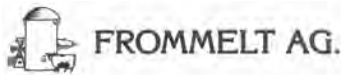


Hosting the Saturday PFI Breakfast:





# Level B Sponsors



## Acknowledgements

Thank you to the organizations, business and agencies who provide funding for the PFI Annual Conference:

- ADM
- Cargill
- Cedar Tree Foundation
- Ceres Trust
- Clif Bar
- Farm Aid
- Lifeline
- Oatly
- PepsiCo
- Seija Family Foundation
- Stranahan Foundation
- Unilever
- Vere Initiatives
- Walmart
- Walmart Foundation
- Walton Family Foundation
- National Fish and Wildlife Foundation and the U.S. Department of Agriculture, under agreement number 2004.22.074823
- National Fish and Wildlife Foundation and the U.S. Department of Agriculture, under agreement number 2007.23.076330
- NRCS CIG and Pheasants Forever
- Sub-award funded by Offices of Partnerships and Public Engagement (OPPE)
- U.S. Department of Agriculture and National Fish and Wildlife Foundation, under grant ID 2004.22.075401 and agreement number 75401
- U.S. Department of Agriculture's (USDA) Agricultural Marketing Service through grant 21FMPPIA1012-00
- U.S. Department of Agriculture, under agreement number NR213A750013G024
- U.S. Department of Agriculture, under agreement number NR216114XXXXG003
- Financial support from U.S. EPA under an Assistance Agreement

Any opinions, findings, conclusions or recommendations expressed in this publication are those of the author(s) and do not necessarily reflect the views of the U.S. Department of Agriculture. In addition, any reference to specific grants or types of products or services does not constitute or imply an endorsement by the U.S. Department of Agriculture for those products or services.

USDA is an equal opportunity provider and employer.

The views and conclusions contained in this document are those of the authors and should not be interpreted as representing the opinions or policies of the U.S. Government or the National Fish and Wildlife Foundation and its funding sources. Mention of trade names or commercial products does not constitute their endorsement by the U.S. Government, or the National Fish and Wildlife Foundation or its funding sources.





# Conference Registration

PFI members save big money!

People make the PFI Annual Conference a rich knowledge-sharing event, and we believe everyone on the farm contributes to a farm's success now, and in the future. We want our conference to be accessible to everyone, so we strive to keep our registration rates low and offer steep discounts for members.

## Individual or Access Memberships

PFI members who have an **Individual** membership (\$50) or an **Access** membership (\$25) may register themselves for a \$20 discount each day.

## Farm & Household or Lifetime Memberships

Members with a **Farm & Household** (\$60) or **Lifetime** PFI membership may register themselves and all individuals covered under their membership (*their household and farm employees up to 10 people*) with the purchase of just one ticket (*yes, one ticket*).

## Organizational Memberships

Members with an **Organizational** membership may register up to three individuals covered under that membership with the purchase of just one ticket.

## Not sure about your membership status?

Check the mailing label on any publication from PFI (*including this one*) to find your membership expiration date. You may also find out by calling the PFI office at **(515) 232-5661**.





# Other Registration Details

## Are you a student?

For individuals currently enrolled in coursework, we have a steeply discounted \$40 ticket to attend both Friday and Saturday sessions. Membership is not required, but a valid student ID is required at check-in.

## Not a member?

Join on the back of your registration form and register under the member rate!

## Need financial assistance to attend?

As funding allows, volunteer opportunities and scholarships may be available. Please call the PFI office to inquire at (515) 232-5661, or email [katie.aupperle@practicalfarmers.org](mailto:katie.aupperle@practicalfarmers.org). You may also check the website at [practicalfarmers.org/annual-conference](http://practicalfarmers.org/annual-conference).

## Don't forget meals!

All meal tickets must be purchased per person, in addition to conference tickets.

For short course attendees, Friday lunch tickets are available but must be purchased with your registration. Friday dinner tickets and Saturday meal tickets (*breakfast and lunch ticket combo*) may be available for purchase on-site, but keep in mind that tickets sell out some years.

All meals at the PFI annual conference are made primarily with ingredients sourced from PFI member farms or local producers. *(In accordance with venue policy, outside food may not be brought into the venue without explicit, prior permission from PFI)*

## Pre-registration deadline

Pre-registrations must be received by **Thursday, Jan. 11**. After that date, registration rates increase and all registrations are walk-in only. No refunds will be given after Jan. 11. All refunds will be charged an \$8 processing fee.

## Accessibility accommodations

We strive to make our conference accessible to everyone. Requests for accommodations should be made at least two weeks prior to the conference (*by Jan. 4*). PFI will make every effort to secure services, but services are subject to availability.

● **Language accessibility**

We have reserved interpretive headsets for the annual conference that are available to use for free. If you know of a group or individual who would like to use an interpretive headset, please contact Valeria Cano Camacho at [valeria.cano.camacho@practicalfarmers.org](mailto:valeria.cano.camacho@practicalfarmers.org) or (515) 232-5661 so we can work together to coordinate an interpreter and ensure sufficient transmitter and receiver headsets are available.

● **Disabilities**

Persons with disabilities, including physical disabilities and hearing or vision impairment, who would like to request accommodations or have questions about physical access may contact Katie Aupperle at [katie.aupperle@practicalfarmers.org](mailto:katie.aupperle@practicalfarmers.org) or (515) 232-5661.

SAVE POSTAGE AND REGISTER ONLINE!

[practicalfarmers.org/annual-conference](http://practicalfarmers.org/annual-conference)

or by calling the office at (515) 232-5661.

◀ OPEN HERE FOR REGISTRATION FORM

# Join PFI or renew your membership!

I AM JOINING AT THE LEVEL OF:

- ☐ Access – \$25
- ☐ Farm or Household – \$60
- ☐ Lifetime Member\* – \$1,200
- ☐ Individual – \$50
- ☐ Organization – \$110
- \* See details at [bit.ly/PFI-lifetime](http://bit.ly/PFI-lifetime)

PFI Membership Total: \$ \_\_\_\_\_

► Primary Conference Registrant Contact Information

Name: \_\_\_\_\_

Farm/Business Name: \_\_\_\_\_

Address: \_\_\_\_\_

City: \_\_\_\_\_ State: \_\_\_\_\_ ZIP: \_\_\_\_\_ Phone: \_\_\_\_\_ Email: \_\_\_\_\_

1. PLEASE CHECK THE CATEGORY THAT BEST DESCRIBES YOU: (CHOOSE ONE)

- ☐ Woman
- ☐ Man
- ☐ Non-Binary
- ☐ Prefer not to answer
- ☐ Prefer to self-describe: \_\_\_\_\_

2. PLEASE CHECK THE CATEGORY THAT BEST DESCRIBES YOU: (CHOOSE ONE)

- ☐ Farmer or farm operator
- ☐ Not farming yet, but would like to be
- ☐ Farmland owner who doesn't actively farm myself
- ☐ Other: \_\_\_\_\_

3. HOW MANY YEARS OF FARMING EXPERIENCE DO YOU HAVE? (CHOOSE ONE)

- ☐ 0
- ☐ 1-5
- ☐ 6-10
- ☐ 11 or more

4. WHAT AGRICULTURAL PRODUCTS DO YOU CURRENTLY RAISE AND MARKET? (CHECK ALL THAT APPLY)

- ☐ Field Crops
- ☐ Horticulture & Specialty Crops
- ☐ Livestock
- ☐ Other: \_\_\_\_\_
- ☐ Not applicable; I don't currently operate a farm

5. PLEASE CHECK THE CATEGORY THAT BEST DESCRIBES YOU: (CHECK ALL THAT APPLY)

- ☐ African American/Black
- ☐ Asian/Pacific Islander
- ☐ Caucasian/White
- ☐ Latino/Hispanic
- ☐ Native American
- ☐ Middle Eastern/North African
- ☐ Prefer not to answer
- ☐ Prefer to self-describe: \_\_\_\_\_

6. HOW DID YOU HEAR ABOUT THE PFI ANNUAL CONFERENCE? (CHECK ALL THAT APPLY)

- ☐ I was invited by a PFI staffer
- ☐ I was invited by a PFI member
- ☐ Shared with me by a friend or colleague
- ☐ Shared with me by another organization
- ☐ PFI website
- ☐ PFI email newsletters
- ☐ PFI printed publication
- ☐ PFI social media (*Facebook, Twitter, Instagram, etc.*)
- ☐ Radio
- ☐ Newspaper or news story
- ☐ Other: \_\_\_\_\_

## PAYMENT – Conference Registration & Membership

PAYMENT SUMMARY: Enter totals from form:

Short Course Total	\$
Member Registration Total	\$
Non-Member Registration Total	\$
PFI Membership Total	\$
Additional Donation*	\$
TOTAL AMOUNT	\$

*\*We take great pride in keeping our conference affordable! To help us keep conference registration rates low into the future, please consider adding a donation to PFI to your registration.*

- ☐ Check or money order is enclosed  
*(Please make payable to "Practical Farmers of Iowa")*
- ☐ Credit card  
*(Visa, MasterCard or Discover only)*

Name on Card \_\_\_\_\_

Number \_\_\_\_\_

Exp. Date \_\_\_\_\_ CVC# (3 digits) \_\_\_\_\_

- ☐ Please charge this credit card annually so my membership will automatically renew

Mail completed form to **Practical Farmers of Iowa, 1615 Golden Aspen Drive, Suite 101, Ames, IA 50010**



# Conference Registration Form

Dietary Restrictions Key	NR = No Restrictions	V = Vegetarian	VG = Vegan	DF = Dairy Free	GF = Gluten Free
--------------------------	----------------------	----------------	------------	-----------------	------------------

## Short Course Registration

Priced **per person**. Due to limited space in the short courses, tickets are priced per person for members and non-members. Please write in the name of each person attending, choose the short course each person will attend and enter the dollar amount in the appropriate column. If you'd like one of the optional meals, enter the price in the lunch column and check your meal type. Then add up the price of all entries in the subtotal. If you're unsure of your membership level or status, please call the office at (515) 232-5661. Membership expiration dates are also on the address label of this brochure.

**Short Course registration is for:** Thursday, Jan. 18: 1:30-6 p.m. and continuing Friday, Jan. 19: 8-11 a.m.

NAME(S)	SELECT ONE SHORT COURSE FOR EACH ATTENDEE			ENTER MEMBER OR NON-MEMBER PRICE FOR EACH PERSON		FRIDAY LUNCH (OPTION FOR SHORT COURSE ATTENDEES ONLY)	SELECT TICKET TYPE (SEE DIETARY KEY ABOVE)
	ORGANIC TRANSITION	GRAZING INTENSIVE	HORTICULTURE SOIL HEALTH	PFI MEMBER PRICE - \$40	NON-MEMBER PRICE - \$80	\$20	
	<input type="checkbox"/>	<input type="checkbox"/>	<input type="checkbox"/>				<input type="checkbox"/> NR <input type="checkbox"/> V <input type="checkbox"/> VG <input type="checkbox"/> DF <input type="checkbox"/> GF
	<input type="checkbox"/>	<input type="checkbox"/>	<input type="checkbox"/>				<input type="checkbox"/> NR <input type="checkbox"/> V <input type="checkbox"/> VG <input type="checkbox"/> DF <input type="checkbox"/> GF
	<input type="checkbox"/>	<input type="checkbox"/>	<input type="checkbox"/>				<input type="checkbox"/> NR <input type="checkbox"/> V <input type="checkbox"/> VG <input type="checkbox"/> DF <input type="checkbox"/> GF
	<input type="checkbox"/>	<input type="checkbox"/>	<input type="checkbox"/>				<input type="checkbox"/> NR <input type="checkbox"/> V <input type="checkbox"/> VG <input type="checkbox"/> DF <input type="checkbox"/> GF
SUBTOTAL OF COLUMNS				\$	\$	\$	
SHORT COURSE TOTAL				\$			

## PFI Member Registration

ONE ticket covers **up to 10** members of a Farm/Household or Lifetime membership, **three** members per Organizational membership and **one** person per Individual or Access membership. To upgrade your membership level, please call the PFI office at (515) 232-5661. Please write in the name of each person attending, and enter the dollar amount to be calculated in the subtotal. **Note:** Kids under 8 eat free on a parent's meal ticket.

**Conference registration is for:** Friday, Jan. 19: 11 a.m.-6:30 p.m. + optional dinner, and Saturday, Jan. 20: 7:30 a.m.-5:15 p.m.

NAME(S)	TICKETS		CONFERENCE MEAL TICKETS		
	FRIDAY \$55	SATURDAY \$55	FRI. DINNER \$15	SAT. BRKFST & LUNCH \$20	SELECT TICKET TYPE (SEE DIETARY KEY ABOVE)
					<input type="checkbox"/> NR <input type="checkbox"/> V <input type="checkbox"/> VG <input type="checkbox"/> DF <input type="checkbox"/> GF
	Remember, one ticket pays for multiple people if you have a Farm/Household, Lifetime or Organizational membership!				<input type="checkbox"/> NR <input type="checkbox"/> V <input type="checkbox"/> VG <input type="checkbox"/> DF <input type="checkbox"/> GF
					<input type="checkbox"/> NR <input type="checkbox"/> V <input type="checkbox"/> VG <input type="checkbox"/> DF <input type="checkbox"/> GF
					<input type="checkbox"/> NR <input type="checkbox"/> V <input type="checkbox"/> VG <input type="checkbox"/> DF <input type="checkbox"/> GF
					<input type="checkbox"/> NR <input type="checkbox"/> V <input type="checkbox"/> VG <input type="checkbox"/> DF <input type="checkbox"/> GF
					<input type="checkbox"/> NR <input type="checkbox"/> V <input type="checkbox"/> VG <input type="checkbox"/> DF <input type="checkbox"/> GF
					<input type="checkbox"/> NR <input type="checkbox"/> V <input type="checkbox"/> VG <input type="checkbox"/> DF <input type="checkbox"/> GF
					<input type="checkbox"/> NR <input type="checkbox"/> V <input type="checkbox"/> VG <input type="checkbox"/> DF <input type="checkbox"/> GF
					<input type="checkbox"/> NR <input type="checkbox"/> V <input type="checkbox"/> VG <input type="checkbox"/> DF <input type="checkbox"/> GF
SUBTOTAL OF COLUMNS		\$	\$	\$	
MEMBER REGISTRATION TOTAL		\$			

## Non-Member & Student Registration

Priced **per person**. Please write in the names for each ticket being purchased, and enter the dollar amount to be calculated in the subtotal. Students must show a valid student ID at check-in.

**Conference registration is for:** Friday, Jan. 19: 11 a.m.-6:30 p.m. + optional dinner, and Saturday, Jan. 20: 7:30 a.m.-5:15 p.m.

NAME(S)	TICKETS			MEALS		
	FRIDAY \$75	SATURDAY \$75	STUDENT (FRI & SAT) \$40	FRI. DINNER \$15	SAT. BRKFST & LUNCH \$20	SELECT TICKET TYPE (SEE DIETARY KEY ON OPPOSITE PAGE)
						<input type="checkbox"/> NR <input type="checkbox"/> V <input type="checkbox"/> VG <input type="checkbox"/> DF <input type="checkbox"/> GF
						<input type="checkbox"/> NR <input type="checkbox"/> V <input type="checkbox"/> VG <input type="checkbox"/> DF <input type="checkbox"/> GF
						<input type="checkbox"/> NR <input type="checkbox"/> V <input type="checkbox"/> VG <input type="checkbox"/> DF <input type="checkbox"/> GF
						<input type="checkbox"/> NR <input type="checkbox"/> V <input type="checkbox"/> VG <input type="checkbox"/> DF <input type="checkbox"/> GF
SUBTOTAL OF COLUMNS	\$	\$	\$	\$	\$	
NON-MEMBER REGISTRATION TOTAL	\$					

## Childcare Registration

Optional. **Childcare is FREE**, but we strongly encourage pre-registering for times needed as only a limited number of drop-in childcare spaces will be available. Snacks and Saturday lunch are provided during childcare; children 8 years and younger eat free on a parent's meal ticket during other meals.

NAME(S)	AGE	TICKETS			SNACKS & SAT. LUNCH
		SHORT COURSE (THURS: 12:45-6 p.m. & FRI: 7:45 a.m.-12 p.m.)	FRIDAY-CONFERENCE (12-6:30 p.m.)	SATURDAY (8:15 a.m.-5:15 p.m.)	SELECT TICKET TYPE (SEE DIETARY KEY ON OPPOSITE PAGE)
					<input type="checkbox"/> NR <input type="checkbox"/> V <input type="checkbox"/> VG <input type="checkbox"/> DF <input type="checkbox"/> GF
					<input type="checkbox"/> NR <input type="checkbox"/> V <input type="checkbox"/> VG <input type="checkbox"/> DF <input type="checkbox"/> GF
					<input type="checkbox"/> NR <input type="checkbox"/> V <input type="checkbox"/> VG <input type="checkbox"/> DF <input type="checkbox"/> GF
					<input type="checkbox"/> NR <input type="checkbox"/> V <input type="checkbox"/> VG <input type="checkbox"/> DF <input type="checkbox"/> GF

PLEASE COMPLETE CONTACT INFO FORM AND PAYMENT ON REVERSE SIDE OF THIS PERFORATED INSERT





# BECOME A MEMBER TODAY!

## PFI MEMBERSHIP

In addition to reduced registration rates for PFI's Annual Conference, membership in PFI offers a host of benefits! Our inclusive organization represents a diversity of farmers, friends of farmers and farmland owners who guide PFI's priorities and lead our programming. Farmers in our network represent a range of experience levels and production practices, raising corn, soybeans, livestock, fruits and vegetables, hay, small grains and more.

We invite you to join our expanding network, and take part in an open exchange of practical information to improve our farms and communities.

Membership Level	Membership For	Annual Fee
<b>Access</b>	Individuals who are current students, retired or beginning farmers, and others on fixed or limited incomes	\$25
<b>Individual</b>	Individuals	\$50
<b>Farm / Household</b>	All members of farm families and any farm employees	\$60
<b>Organization</b>	Non-farming businesses, agencies and departments; benefits cover up to three employees	\$110
<b>Lifetime</b>	Individuals or families who would like to make a lifetime commitment <i>*terminates with the primary members; excludes businesses</i>	\$1,200

## Member Benefits

- A subscription to our quarterly **magazine**, the Practical Farmer, full of inspiring stories, on-farm research results, innovative projects, member profiles and more
- Invitations to 100+ (virtual and on-farm) **events** annually, with steep discounts to our annual conference and other events
- Eligibility to participate in our members-only **email discussion groups** to share ideas, resources and tools with one-another. Discussion groups include Announcements, Field Crops, Horticulture, Livestock and Perspectives
- Eligibility to participate in our **Cooperators' Program** and to design and conduct on-farm research projects exploring questions you want to answer for your farm
- Eligibility to participate in **Labor4Learning**, our program for aspiring farmers, and our **Savings Incentive Program** for beginning farmers
- Opportunities to **serve as a farmer leader**, with stipends for sharing your knowledge as an event host, speaker or mentor
- The ability for your farm to be listed in our public **Local Foods Directory**, or your organization to be listed in our **Business Directory**, which can help you find new customers and markets for your products
- The chance to become part of a network of people who share our vision for healthy soil, healthy food, clean air, clean water, resilient farms and vibrant communities – and to help guide the focus of our farmer-led organization

**To become a member, complete the membership form on the conference registration insert, visit [practicalfarmers.org](http://practicalfarmers.org) or call (515) 232-5661.**



1615 Golden Aspen Drive | Suite 101 | Ames, IA 50010  
(515) 232-5661 | [practicalfarmers.org](http://practicalfarmers.org) | [info@practicalfarmers.org](mailto:info@practicalfarmers.org)



# PRACTICAL **FARMERS** *of Iowa*

1615 Golden Aspen Drive, Suite 101  
Ames, IA 50010

Thank you to our Level A Sponsors!



Visit our website today to register ► [practicalfarmers.org/annual-conference](http://practicalfarmers.org/annual-conference)