

PRACTICAL FARMERS OF IOWA

2024

FIELD DAY

Guide



PRACTICAL
FARMERS
of Iowa

practicalfarmers.org

THANK YOU TO OUR LEVEL A SPONSORS!



GRAIN MILLERS



SundermanSM
FARM MANAGEMENT

ADM[®]
re:generations[™]



WELTER SEED
& HONEY CO.

800.470.3325
welterseed.com

Finest Quality Seeds



MAD!
CAPITAL



GREENCOVER



ORGRAIN



COVER CROPS
OUR ROOTS RUN DEEP



NATURAL
RESOURCES
CONSERVATION
SERVICE



IOWA AGRICULTURE
WATER ALLIANCE

IOWA STATE UNIVERSITY
Extension and Outreach



► Visit pages 36-37 to see the rest of our major sponsors!

Welcome to Practical Farmers of Iowa's 2024 Field Day Season!

Over 50 farms across Iowa, as well as Illinois, Minnesota, Missouri, Nebraska and Wisconsin, are opening their farm gates, inviting you to join PFI for another summer of farmer-to-farmer learning.

Whether you're new to PFI field days or a yearly attendee, you'll find a welcoming atmosphere, a spirit of curiosity, a culture of mutual respect and farmers openly sharing their knowledge and experience. At PFI, we have a unique learning model: Our events are led by farmers – we know they are the experts on their specific farming systems. At PFI field days, farmers believe in sharing their knowledge, discoveries, mistakes and successes so you can learn and grow your own operation.

Please join us – we look forward to seeing you at a field day this season.

See you on the farm,

Liz Kolbe

Farmer-Led Education Director



Table of Contents

6-7

Field Day
Policies & Logistics

8-9

Field Day
List & Map

10-11

Spanish
Summer Events

12-67

Individual Field
Day Descriptions

68

Acknowledgements

69-70

PFI Membership
Information

Field days are free
and open to everyone!



Looking for more events or information?

- Find events, resources and more on our website at practicalfarmers.org.
- Connect with us on social media.
- Sign up for our free weekly email newsletter or one of our specialty email newsletters at bit.ly/SubscribeToPFI or **scan the QR code** here to get the latest news, resources and information delivered right to your inbox.



Field Day Policies & Logistics

Open to Everyone

All PFI field days are **free for anyone to attend**; PFI membership is not required or expected. Our goal here is simple: We want farmers to visit with and learn from one another. Not a farmer? That's okay, you're invited too! If you're an eater, consumer, researcher, friend-of-farmer, policymaker, neighbor or simply curious to learn about agriculture – everyone has a role to play in supporting resilient farms and communities. We hope you'll join us.

RSVPs Appreciated

RSVPs are appreciated for PFI field days. To RSVP, visit practicalfarmers.org/field-days, call our office at (515) 232-5661, or use the **QR codes** on individual field day pages.

Getting to Field Days

For most field days, online maps are accurate. However, if special guidance is needed, it will be included under “Location Notes” on the individual field day pages in this guide. To help you find your way, directional signs with the PFI logo will be placed near the last few turns.



What to Bring

All PFI events occur rain or shine. Please dress for the weather and the terrain. Many field days include walking through tall grasses or fields, or around equipment, and in a range of weather conditions. We recommend that you bring:

- **Close-toed shoes**
(comfortable for walking)
- **Sun protection**
(cap or hat, sunscreen)
- **Water bottle**
(we will provide refills!)
- **Rain jacket or poncho**
(depending on the forecast)
- **Camp chair or stool**
(especially if there's a meal!)
- **Personal snacks**
(particularly if you have a food allergy or other dietary restrictions, please bring personal snacks in case the provided meal or refreshments do not meet your needs.)
- **Your family**
(Children are welcome to attend with parents! Please be mindful of the dangers on a working farm, including electric fence, difficult terrain, animals and equipment.)

What Not to Bring

- **Dogs or other pets are not permitted** (service dogs, as defined by the Americans with Disabilities Act, are permitted)
- Professional camera or recording equipment, unless you are a member of the news media or have prior approval from PFI – see more at practicalfarmers.org/resourcesformedia
- Exhibitor or promotional materials or solicitations, unless you are an official field day sponsor



Special Instructions for Visiting Farms With Livestock

We ask that all attendees at field days where livestock are present observe the following biosecurity practices. While biosecurity is important on all farms, clean shoes and clothes are particularly important due to the presence of highly pathogenic avian influenza (HPAI).

When visiting farms with livestock, we ask that attendees:

- **Wear clean shoes or boots** that have not been worn on other farms with livestock or livestock buildings, or around a dense population of wild birds. If shoes or boots were worn around livestock or birds, they must be cleaned and disinfected.
- **Wear clean clothes** that have not been worn around other livestock.
- Upon request of the farmer host or PFI staff during the field day, you may be asked to:
 - Disinfect shoes or boots in a phenol or similar solution.
 - Wear disposable plastic boot covers over your shoes (*provided by PFI*).

Civility Commitment

Our commitment is to learn from each other. We acknowledge differences in beliefs, values, politics, culture, interests and experiences.

We Commit To:

- Listening respectfully to each other
- Recognizing and respecting different levels of understanding
- Actively seeking common ground
- Creating an environment free from language and symbols that are hostile, intimidating or abusive of others

Notice of Photography & Filming

By attending this event, you agree to be photographed, filmed, and/or otherwise recorded and for PFI to use this content in future communications and marketing, including (*by way of example only*) on social media and in media coverage, publications and advertising. This includes children and dependents attending the event with you.

PFI staff will do their best to accommodate the requests of individuals who do not wish to be photographed.

Questions?

Contact the PFI office at info@practicalfarmers.org or (515) 232-5661.

Field Day List & Map

- June 7 · Paullina**p.12 | Map ID 1
Dairy Grazing, Silvopasture and Compost
- June 12 · Cedar Falls**p.13 | Map ID 2
Targeted Conservation for Layered Benefit:
Using Data To Create Habitat
- June 14 · Knoxville**p.14 | Map ID 3
Grazing 'Round the Farm
- June 17 · Packwood**p.15 | Map ID 4
Rye Resiliency: Strategies for Using Rye To
Build and Maintain Soil Health
- June 19 · Washington**p.16 | Map ID 5
A Legacy of Stewardship: Using Cover Crops,
Biochar and Nature for Sustainable Agriculture
- June 20 · Garnavillo**p.17 | Map ID 6
Discovering Covers: Options From Seeding to
Species and How They Affect Soil Health
- June 20 · Lonsdale, MN**p.18 | Map ID 7
The Basics of Raising Sheep for Wool
- June 22 · Hubbard**p.19 | Map ID 8
Maintaining High Yields With Cover Crops and Conservation
- June 23 · Norwalk**p.20 | Map ID 9
Cultivating an Experience: Engaging Through
Agritourism, Marketing and Production at Rose Farm
- June 26 · Humboldt**p.21 | Map ID 10
Building Soil Health Through Relay-Cropping,
Extended Rotations and Reduced Tillage
- June 27 · McLean, NE**p.22 | Map ID 11
Farming Outside the Box: A Fresh Approach
to Diversification on a Nebraska Farm
- June 28 · Cuba City, WI**p.23 | Map ID 12
Creating Resiliency Through Diversity With Crops and Livestock
- June 30 · Coggon**p.24 | Map ID 13
Hands-On Field Day at Garden Oasis Farm
- June 30 · Ames**p.25 | Map ID 14
Agriculture Supporting Community: Cultivating Food, Habitat
and Leaders at Mustard Seed Community Farm
- July 2 · Maynard**p.26 | Map ID 15
Nutrient Management Using Intercropping
in an Organic Operation
- July 2 · Chelsea · *In Spanish***p.11 | Map ID 16
Year in the Life With Adam: Goat Health and Management
- July 10 · Fertile**p.28 | Map ID 17
Growing, Processing and Marketing Onions
and Potatoes for Wholesale Outlets
- July 10 · Corning**p.29 | Map ID 18
Innovative Strategies for Diversifying a Row Crop Operation
- July 11 · Brighton**p.30 | Map ID 19
Organic U-Pick Blueberries and Day-Neutral
Strawberries at Blueberry Bottom Farm
- July 13 · Spring Grove, MN**p.31 | Map ID 20
Communicating Cuts Workshop: From Carcass to Consumer
- July 16 · Oconomowoc, WI**p.32 | Map ID 21
Setting Up a Multi-Species Grazing Operation
- July 18 · Grundy Center**p.33 | Map ID 22
Grundy County Workshop: Biologicals, the Hot Topic
- July 19 · Pecatonica, IL**p.34 | Map ID 23
Going With the Grain: Diversified, Small-Scale Grain Farming
With On-Farm Processing
- July 20 · Waterloo**p.35 | Map ID 24
Growing Food for Habitat: Supporting Pollinators and Beneficial
Insects in a Community Garden
- July 23 · Kerkhoven, MN**p.36 | Map ID 25
Centering Sustainability From Farrow to Finish
- July 24 · Osage**p.37 | Map ID 26
Improving Soil Through Nitrogen Reduction
and Conservation Practices
- July 28 · Bridgewater**p.40 | Map ID 27
Growing Opportunity: Season Extension,
Organic Production and Scaling Up at Bridgewater Farm
- July 30 · Stanley**p.41 | Map ID 28
Establishing and Growing a Cover Crop
Seeding and Service Business
- Aug. 4 · Central City**p.42 | Map ID 29
Adaptive Marketing Through a Collaborative CSA, Value-Added
Products and On-Farm Sales at Buffalo Ridge Orchard
- Aug. 6 · Gothenburg, NE**p.42 | Map ID 30
Central Nebraska Cover Crop Workshop
- Aug. 9 · Sartell, MN**p.43 | Map ID 31
Boots on the Ground: Tips for Transitioning to No-Till
- Aug. 10 · Harlan**p.44 | Map ID 32
Honing Pasture Management With Rotational
Grazing + Cover Crops
- Aug. 13 · Des Moines**p.45 | Map ID 33
PFI Member Day at the Iowa State Fair
- Aug. 16 · Illinois City, IL**p.46 | Map ID 34
Relay-Cropping and Reducing Inputs To
Achieve Regenerative Resilience
- Aug. 21 · Lakefield, MN**p.47 | Map ID 35
Make Way for Pheasants: Assessing Habitat
Potential on Marginal Acres
- Aug. 23 · Logan**p.48 | Map ID 36
Scaling Up Custom Cover Crop Application
- Aug. 24 · Red Oak · *In Spanish***p.11 | Map ID 37
Year in the Life With Jenny & Emilio:
What To Expect From Rotational Grazing
- Aug. 25 · Gladbrook**p.50 | Map ID 38
Hands-On Poultry Processing at Mad Acre Farms
- Aug. 27 · Parnell**p.51 | Map ID 39
Getting Started With Chestnuts
- Aug. 27-29 · Boone**p.52 | Map ID 40
PFI at the Farm Progress Show

Aug. 29 · Storm Lakep.53 | **Map ID 41**
Adding Produce to the Mix at Hayes Farm

Aug. 30 · Marengop.54 | **Map ID 42**
Reducing Nitrogen With Rotational Cover Cropping and Biologic Additions

Sept. 1 · Calmarp.55 | **Map ID 43**
Mindful Growth at Sweet Season Farm

Sept. 3 · Red Oakp.56 | **Map ID 44**
Transitioning Ground and Changing Generations

Sept. 4 · Mount Pleasantp.57 | **Map ID 45**
Fitting Farming Into Life at Mogo Farms

Sept. 7 · Wintersetp.58 | **Map ID 46**
Cattle Handling and Grass-Based Genetics

Sept. 7 · Camanchep.59 | **Map ID 47**
Establishing New Prairie for Endangered Beneficial Insects on a Century Farm

Sept. 12 · Boutonp.60 | **Map ID 48**
Making a Livelihood With Livestock: A Whole-Farm Approach With Forage Crops and Cover Crops

Sept. 13 · Marionp.61 | **Map ID 49**
Equitable Land Access and Culturally Relevant Vegetable Production at Feed Iowa First's Wanatee Farm

Sept. 13 · Elmo, MOp.62 | **Map ID 50**
Multi-Species Cover Crops + Farmland Owner Legacy Award

Sept. 15 · Waverlyp.63 | **Map ID 51**
Diversifying the Farm by Integrating Pastured Poultry With Tree Fruit and Berries at Solstice Farm + Paha Cider Co.

Sept. 20 · Exirap.64 | **Map ID 52**
Developing Infrastructure on a Diversified Farm One Project at a Time at Brun Ko Farm

Sept. 26 · Washingtonp.65 | **Map ID 53**
Sheep, Dogs and Sheepdogs

Oct. 1 · Chelsea · In Spanishp.11 | **Map ID 54**
Year in the Life With Adam: Equipment Overview

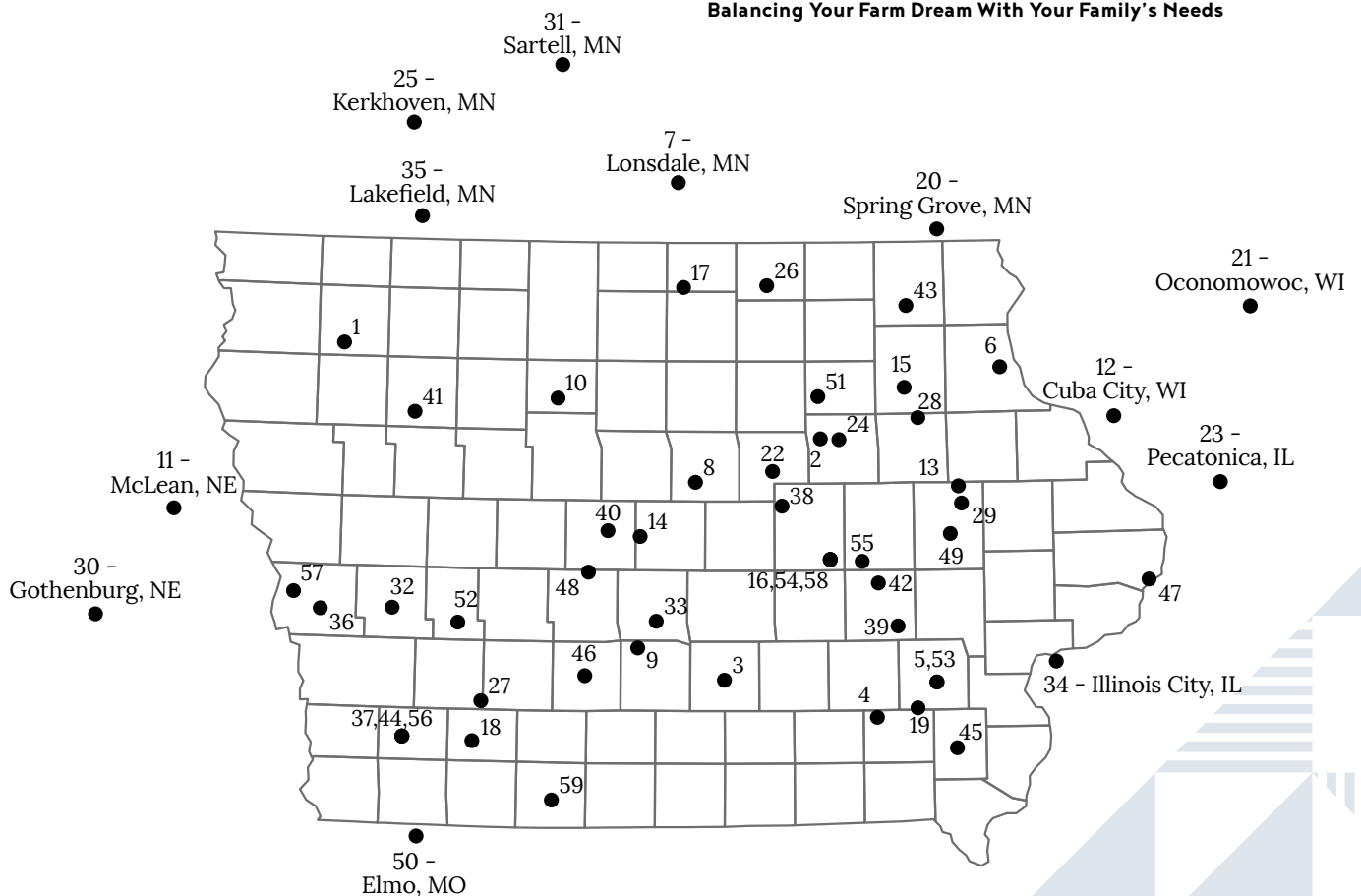
Oct. 2 · Luzernep.67 | **Map ID 55**
Starting Out and Building Up With Pigs, Poultry and Small Grains

Oct. 12 · Red Oak · In Spanishp.11 | **Map ID 56**
Year in the Life With Jenny & Emilio: Goat Health Basics

Oct. 26 · Mondaminp.69 | **Map ID 57**
Establishing Prairie: Selecting Seeds To Restore and Optimize Native Habitat

Nov. 5 · Chelsea · In Spanishp.11 | **Map ID 58**
Year in the Life With Adam: Fall Grazing and Pasture Management

Nov. 9 · Mount Ayrp.71 | **Map ID 59**
Balancing Your Farm Dream With Your Family's Needs



Note: Out-of-state locations are not shown to geographic scale; they have been placed to give you an approximate representation of their position relative to Iowa.

Spanish Summer Events

Field Days and Events in Spanish

For the second year in a row, PFI is pleased to offer a suite of field days, socials and online learning in Spanish. Additionally, a set of English-language field days will offer Spanish interpretation. If you, or another person or organization, would appreciate having one (or a stack) of PFI's Spanish Event Guides, please contact the PFI office at (515) 232-5661 or email valeria.cano.camacho@practicalfarmers.org.

For more information on PFI's Latino Program and events in Spanish, visit practicalfarmers.org/agricultores-latinos.



Días de Campo y eventos en español

Por segundo año consecutivo, PFI se complace en ofrecer un conjunto de días de campo, eventos sociales y aprendizaje en línea en español. Además, una serie de días de campo en inglés ofrecerán interpretación en español. Si usted, u otra persona u organización, apreciaría tener una (o una pila) de las Guías de Eventos en español de PFI, comuníquese con la oficina de PFI al (515) 232-5661 o envíe un correo electrónico valeria.cano.camacho@practicalfarmers.org.

Para más información sobre nuestra programación para hispanohablantes, visite practicalfarmers.org/agricultores-latinos.

Creating Community With PFI Spanish Socials

Join us for open house-style socials throughout the state starting in May! As Practical Farmers grows, we welcome new faces and backgrounds to our network. One of the many ways we do this is through our community-hosted PFI Spanish socials. For these events, PFI partners with local Latino-led organizations and businesses. To see the complete list of socials, scan the QR code at the right.



Find Us At Local Festivals

Come say hello to Valeria, our Latino engagement coordinator, at local festivals and events throughout the year. We'd love to connect and learn more about you, what you're curious about and how PFI can support you.

La Luz Gran Festival
Hampton, IA | June 8

OLOA "Jamaica" Community Festival
Des Moines, IA | August TBD

Iowa's Heritage Festival
Des Moines, IA | Sept. 21-22

Emerging Farmers Conference
Minneapolis, MN | Nov. 1-2

Stay in the Loop!

Sign up for our monthly Spanish e-newsletter, Sembrando Resiliencia, to stay up to date on PFI's Spanish events and resources. You can sign up at bit.ly/SubscribeToPFI.

Agricultores
Practicos
SEMBRANDO
RESILIENCIA

“Year in the Life” Workshop

We are hosting eight Spanish field days in 2024 in our “Year in the Life” workshop series, which launched in early April and includes four field days each focused on the experiences of two different goat farmers. These field days are supported by online classes to dive deeper into starting a meat or dairy goat operation. To see recordings of field days and online classes, contact Valeria at valeria.cano.camacho@practicalfarmers.org or (515)-232-5649.

Meet Our Hosts



Jenny Horner and Emilio Moreno are beginning livestock farmers in Red Oak, Iowa. They farm on Jenny’s family farm, Spring Lake Organics, which includes 110 acres of certified organic hay. Jenny added the goats to the farm six years ago to help revive the land with rotational grazing and foraging. Jenny’s and Emilio’s future plans include producing value-added products and getting started with agritourism.

Red Oak, Iowa

March 30

Introduction to the Farm & Herd

May 25

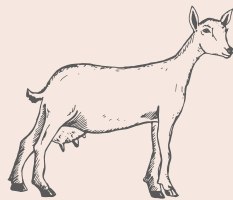
Goatscaping 101

Aug. 25

What to Expect From Rotational Grazing

Oct. 12

Goat Health Basics



Adam Ledvina runs a large-scale holistic meat goat operation, Iowa Kiko Goats, based in Tama County, Iowa. This is a forage-based operation focused on low maintenance and high performance. Through rotational grazing and good management, he has grown his herd to between 500 to 1,000 goats depending on the time of year.

Chelsea, Iowa

May 21

Introduction to the Farm & Kidding

July 2

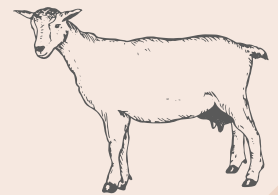
Goat Health & Management

Oct. 11

Equipment Overview

Nov. 5

Grazing & Pasture Management



Remaining Online Workshops

June 6 | Risk Mitigation and Loss Prevention Part 1, and Parasites, Predation, Disease, Nutritional and Environmental Impacts

July 18 | Virtual Farm Tour of Kidding and Nursery Facilities Followed by Q&A

Sept. 5 | Marketing, Evaluating, Improving and Planning

Nov. 7 | Holistic Management, FSA and Legal Issues



See further details at bit.ly/caprina24
or scan here for more information.

Dairy Grazing, Silvopasture and Compost



Friday, June 7
10 a.m.–Noon

4375 Pierce Ave.
Paullina, IA 51046

HOSTS

Torray & Erin Wilson
Wilson Organic Dairy



RSVPs appreciated at
practicalfarmers.org/field-days

Torray and Erin Wilson are part of the third generation on the Wilson farm. Each family member active in the farm is responsible for a different crop or livestock enterprise. Torray and Erin operate the grass-based dairy, selling milk to Organic Valley since 2016. They both have training in Holistic Management and continue to find those insights helpful in managing the complexity of the farm and family.

Come learn how they are doing things differently in corn and soybean country, from grazing their dairy herd and planting silvopasture to experimenting with Johnson Su compost. Torray says their goal is to have a farm that is flourishing and beautiful.

SPONSORS

- Albert Lea Seed House
- Byron Seeds
- Iowa State University Organic Ag Program
- MOSA Certified Organic
- Niman Ranch
- Riverside Feeds, LLC
- Savanna Institute

MEAL

Lunch will follow the field day.

LOCATION NOTES

If driving from the northeast, avoid 430th Street. Take 420th Street west to Pierce Avenue, turn left and drive south about 2 miles. The farm will be on the right.

See & Discuss

- Planning and planting silvopasture around tile lines
- Infrastructure for grazing dairy cows
- Rotational grazing with daily moves
- Making and using Johnson Su Compost
- Soil health and biology

Targeted Conservation for Layered Benefit: Using Data To Create Habitat

In partnership with Pheasants Forever



Wednesday, June 12
9 a.m. – Noon



5495 N. Union Rd.
Cedar Falls, IA 50613

HOST
Steve Robisky



RSVPs appreciated at
practicalfarmers.org/field-days

Planting prairie can achieve many goals. When strategically located, that prairie can improve your farm's bottom line. Join us at Steve Robisky's 15-year-old Conservation Reserve Program planting to discuss how conservation practices can increase yield averages, reduce input costs and improve the "farmability" of the rest of your field, all while creating wildlife habitat.

Neighboring farmer Chuck Hesse will explain how he improved his farm's profitability by targeting his marginal acres. Stephanie Nelson, with Pheasants Forever, will share profitability maps and other data that can aid your decision-making process. Steve will cover tips for successfully establishing and managing your prairie and crop interface. Please bring your own lawn chairs.

SPONSOR

Mad Capital

SPEAKERS

Stephanie Nelson – Pheasants Forever
Chuck Hesse – neighboring farmer

MEAL

Light refreshments will be provided during the field day.

See & Discuss

- Using soils, topographic and yield data to identify marginal land for conservation opportunities
- Flexible CRP practices that can be tailored to many situations
- The economics of establishing and maintaining prairie within the framework of a CRP contract
- Tips for managing weeds and encroaching trees on established prairie
- Pheasants Forever's precision conservation incentive

Grazing 'Round the Farm



Friday, June 14
10 a.m. – Noon

1707 80th Ave.
Knoxville, IA 50138

HOSTS

Ethan & Becca Book
Crooked Gap Farm



RSVPs appreciated at
practicalfarmers.org/field-days

Since 2006, the Book family has been raising livestock at Crooked Gap Farm and direct-marketing through farmers markets and a CSA. Ethan is currently working to transition 60 newly acquired acres from row crop to permanent pasture, guided by a holistic view of sustainability that includes physical, emotional and financial considerations.

Come learn how Ethan is making the transition pencil out. You'll also hear how he has made use of Natural Resources Conservation Service programs, cover crops and multi-species grazing. The field is in the first year of transition, so bring your questions – but also be ready to share your experiences! Ethan will also share how he uses marginal woodland for the health of both forest and pigs.

SPONSORS

Albert Lea Seed House
 Mad Capital
 Story City Locker LLC

MEAL

Lunch will follow the field day.

FARM INFO

Facebook: Crooked Gap Farm
 Instagram: Crooked Gap Farm
 Website: crookedgapfarm.com

NOTE

There will be a wagon ride to the Book family's cover crop field a quarter-mile away.

See & Discuss

- Transitioning row crop ground to permanent pasture
- Grazing cover crops with sheep and cattle
- NRCS programs
- Woodlot infrastructure for pigs
- How to raise pigs in the woods

Rye Resiliency: Strategies for Using Rye To Build and Maintain Soil Health



Monday, June 17
4:30–6:30 p.m.

1374 Colombine Blvd.
Packwood, IA 52580

HOSTS

J.D. Hollingsworth and Dave Hollingsworth



RSVPs appreciated at
practicalfarmers.org/field-days

David Hollingsworth has been farming near Packwood, Iowa, for 47 years. His son, J.D., has farmed with him for the past 24 years. Together, they raise corn and soybeans and grow cereal rye as a cover crop and for seed. After years of exploring reduced tillage strategies since the 1990s, J.D. and Dave became fully no-till in 2015; they now have 100% of their 1,200 acres cover cropped as well. Soil health and water quality are a key concern as J.D. raises the farm's next generation on the land. Come learn how they're working to steward their farm's soil. You'll get to see a small field of soybeans with roller-crimped rye, and the rye crop J.D. and Dave will harvest for seed mid-summer.

LOCATION NOTES

The field day will begin at 1374 Colombine Blvd. for the first portion. Attendees will then caravan to 1176 125th St. for the closing portion, with one field stop along the way.

SPONSORS

ADM re:generations
Continuum Ag

SPEAKERS

Jason Steele – NRCS

Ryan Wolf & Chris Wolf – Farm neighbors

MEAL

Dinner will follow the field day at nearby 1176 125th St.

FARM INFO

Facebook: Hollingsworth Farms Soil Health

See & Discuss

- Roller-crimping rye in soybeans
- Management strategies for cereal rye pre-harvest
- Cutting back on fertilizer and chemical inputs
- A slake test demonstration and rainfall simulator

A Legacy of Stewardship: Using Cover Crops, Biochar and Nature for Sustainable Agriculture



Wednesday, June 19
4-6 p.m.

2449 Hemlock Ave.
Washington, IA 52353

HOST
Rob Stout



RSVPs appreciated at
practicalfarmers.org/field-days

Rob Stout owns 120 acres in Washington, Iowa, and has been farming there since 1990, raising corn, soybeans, small grains and pigs. He grew up just 2 miles from his current farm and has been no-till since 1983. In 2009, Rob started using cover crops. For many years, he has also been active in PFI's Cooperators' Program conducting on-farm research on a range of topics, including many aspects of cover crops.

One recent project looked at whether planting corn into a green cereal rye cover crop affected corn seedling disease. In his latest trial, Rob is testing whether using biochar as a seed treatment can boost his corn yields. Join Rob and his family to explore how cover crops have helped keep nutrients on the land and improved their soil and water quality. Rob will also share what he's learned so far from his latest on-farm trial.

SPONSOR

Continuum Ag

MEAL

Dinner will follow the field day.

See & Discuss

- Using cover crops like cereal rye and oats to suppress weeds and improve soil and water quality
- Soil sampling and testing methods with the goal of increasing organic matter 0.1% each year
- Integrating the Conservation Stewardship Program to reduce erosion, tillage and nutrient runoff and to improve water quality

Discovering Covers: Options From Seeding to Species and How They Affect Soil Health



Thursday, June 20
4-6 p.m.

26143 Ivory Rd.
Garnavillo, IA 52049

HOSTS

Edmund & Barbara Ruff



RSVPs appreciated at
practicalfarmers.org/field-days

Edmund and Barbara both grew up on farms in Clayton County, Iowa. Today, they steward Edmund's family farm, a century farm, growing corn and soybeans on about 85 acres. They have planted cover crops across the whole farm since 2018 using rye and a mix of other species. To seed their cover crops, they have explored seeding by airplane, no-till drill, drone and even by hand.

Years of work in agriculture education helped inspire Edmund to plant educational cover crop plots last fall on a rodeo arena at the Clayton County Fairgrounds. Join Edmund and Barbara to view a range of cover crop management practices at the fairgrounds. Then head to the farm to discuss how no-till and cover crops can help build soil health and improve nutrient management.

SPONSORS

Albert Lea Seed House
Iowa Soybean Association Research Center
for Farming Innovation

MEAL

Dinner will follow the field day.

See & Discuss

- Planting single- and multi-species cover crop test plots for education
- Using terracing and no-till to minimize soil erosion
- The ins and outs of different cover crop seeding methods
- Soil health assessments from a carbon-nitrogen perspective
- A project to preserve a historic 90-year-old barn

The Basics of Raising Sheep for Wool



Thursday, June 20
4-6 p.m.

10900 Garfield Ave.
Lonsdale, MN 55046

HOSTS

Stacy & Kevin Dresow
Dresow Family Farms



RSVPs appreciated at
practicalfarmers.org/field-days

Dresow Family Farm is a start-from-scratch story. Stacy and Kevin raise white and colored Cormo and Cormo cross-bred fine-fleeced sheep for their squishy, soft wool. They rotationally graze their sheep in woods and pastures and have been certified through Minnesota’s Agricultural Water Quality Certification Program since 2018. From lambing and feeding to shearing and marketing, Stacy has been figuring out how to do it all while keeping “local” in mind in all their farm operations. If you’re thinking about starting to farm, are new to sheep or want to explore new opportunities for marketing, come learn what Stacy says are the key things you need to know about sheep.

LOCATION NOTES

Use the full address to navigate directly to the farm. Typing in “Dresow Family Farms” brings you to the intersection of Garfield Avenue and County Road 1 / Millersburg Boulevard. From there, travel south on Garfield Avenue until arriving at the farm at the end of the road.

SPONSOR

Premier 1 Supplies

MEAL

A meal will follow the field day.

FARM INFO

Facebook: Dresow Family Farm
 Instagram: Dresow Family Farm
 Website: dresowfamilyfarm.com

See & Discuss

- Balancing time between family and farm
- Feeding sheep by estimating carrying capacity, rotational grazing and winter hay supplies
- Facilities for shearing and lambing
- Marketing wool and meat

Maintaining High Yields With Cover Crops and Conservation



Saturday, June 22
10 a.m. - Noon

25819 M Ave.
Hubbard, IA 50122

HOSTS

Kurtis & Kathy Kadolph and Al Kadolph



RSVPs appreciated at
practicalfarmers.org/field-days

Kurtis Kadolph and his father, Al, farm 700 acres of no-till corn and soybeans in Hardin County, Iowa, where Al is working to transition farming operations to Kurtis. They use cover crops on all their acres with the goal of improving weed control and building soil health. They also work to maintain high yields and profitability with cover crops – and through the edge-of-field conservation practices. Besides using no-till, these practices include grass waterways, terraces, buffer strips and pollinator habitat to control erosion and promote biodiversity. Al and Kurtis look forward to showing their conservation efforts and sharing how they manage their multi-species cover crop.

SPONSORS

ADM re:generations
Center for Rural Affairs
Innovative Ag Services
Iowa Soybean Association Research Center
for Farming Innovation

SPEAKERS

John Gilbert – Gibraltar Farm and Southfork Watershed Alliance

Melissa Miller – Southfork Watershed Alliance

MEAL

Lunch will follow the field day.

See & Discuss

- Using cover crops to increase soil biology and organic matter
- A cover crop mix of brassicas, cereal rye and camelina ahead of a corn crop
- A cover crop mix of cereal rye, rapeseed and camelina ahead of soybeans
- No-till corn-on-corn and corn-on-soybeans with use of a cover crop
- Edge-of-field conservation practices
- Equipment including a Case IH Precision 550T no-till drill and Case IH 2150 planter set-up for no-till into cover crops with in-furrow starter fertilizer

Cultivating an Experience: Engaging Through Agritourism, Marketing and Production at Rose Farm



Sunday, June 23
3-5 p.m.

7197 43rd Ave.
Norwalk, IA 50211

HOSTS

Karri & Patrick Rose
Rose Farm



RSVPs appreciated at
practicalfarmers.org/field-days

Karri Rose wants to welcome you to her farm, where magic awaits. The former executive director of beauty brand Aveda, Karri and her husband Patrick Rose opened Rose Farm to the public in 2019, and have been growing ever since. In addition to managing 3 acres of cut flowers and 2 acres of pollinator habitat, they cultivate an array of memorable guest experiences and employ a consistent business philosophy across enterprises.

On the production side, dahlias are a key offering; Karri and Patrick are excited to share what they've learned about managing the demanding crop. Karri's business savvy, gained from her previous career, leads her to always assess what does and doesn't work, and to identify new opportunities.

SPONSOR

Iowa Specialty Crop Growers Association

MEAL

A social hour with light refreshments will follow the field day.

FARM INFO

Facebook: Rose Farmstead
Instagram: Rose Farmstead
Website: rosefarmstead.com

See & Discuss

- Agritourism and diverse on-farm revenue streams
- Using focus groups to assess your market
- Creating and applying a business philosophy
- Dahlia production from start to finish

Building Soil Health Through Relay-Cropping, Extended Rotations and Reduced Tillage



Wednesday, June 26
4:30–6:30 p.m.

1582 250th St.
Humboldt, IA 50548

HOSTS

Doug & Kim Adams and Harley Hett



RSVPs appreciated at
practicalfarmers.org/field-days

Doug Adams is a sixth-generation row crop farmer in Humboldt, Iowa. He also works off-farm for the Natural Resources Conservation Service helping farmers with terraces, waterways and soil health. On his own farm, Doug grows corn and soybeans and has been using strip-till and no-till practices since 2000, and cover crops since 2012. Using oats and other small grains extends Doug's rotation, covers the soil for more of the year and allows more opportunity for nutrient cycling.

Doug is excited to share his experiences with relay-cropping soybeans and winter wheat to control weeds and build the soil. You will also learn about Doug's partnership with neighbor Harley Hett of Deerfield Farms. Together, they are working to transition Harley's operation as he plans for retirement.

SPONSORS

Farming for Public Health

Grain Millers

Sunderman Farm Management Co.

SPEAKER

Representative from Humboldt County NRCS

MEAL

Dinner will follow the field day.

FARM INFO

X (formerly Twitter): @farmerdoug93

See & Discuss

- Relay-cropping soybeans and winter wheat
- Using cover crops for weed control
- Extending rotations with small grains to improve nutrient cycling
- Forming partnerships for farm transition
- A rainfall simulator and slake test

Farming Outside the Box: A Fresh Approach to Diversification on a Nebraska Farm



Thursday, June 27
10 a.m.–Noon

FIELD LOCATION: 868th Road between 550th Avenue and 551st Avenue McLean, NE 68747

HOSTS

**Junior & Katelyn Pfanstiel,
Gene & Julie Pfanstiel**



**RSVPs appreciated at
practicalfarmers.org/field-days**

Junior Pfanstiel and his family farm near McLean, Nebraska, raising corn, soybeans, small grains, grain sorghum, buckwheat, forage peas and pinto beans on 270 acres that they are transitioning to a regenerative organic system. Junior started down the regenerative path when nitrogen costs were over a dollar per pound, and he decided to grow his own nitrogen by planting legume cover crops.

As he reduced his chemical inputs, Junior decided he should be striving for the organic premium and started transitioning acres to organic. At this field day, Junior will showcase his trial testing the performance of corn hybrids after roller-crimping a legume cover crop mix. He'll also highlight his food-grade white grain sorghum and discuss his journey transitioning to organic, reducing inputs and growing his own nitrogen.

LOCATION NOTES

This field day is eight minutes northwest of McLean, Nebraska, on 868th Road between 550th Avenue and 551st Avenue. From McLean: Head north out of town on 553rd Avenue. In 1.5 miles, turn left (west) onto 868th Road. Continue 2 miles to the intersection of 868th Road and 551st Avenue. Follow signs for parking.

SPONSORS

Lower Elkhorn Natural Resources District
Walmart Foundation

MEAL

Lunch will follow the field day, and will be held at 215 Main St., Magnet, Nebraska, at the Magnet Community Center.

FARM INFO

Facebook: Outside the Box Agronomy
X (formerly Twitter): @pfanstieljunior

See & Discuss

- A corn hybrid plot testing hybrid performance in a roller-crimped cover crop system with zero synthetic inputs
- Food-grade white grain sorghum planted green
- Transitioning to a regenerative organic system
- A nitrogen-fixing cover crop mix of ND Gardner, a variety of winter rye, along with balansa clover and hairy vetch for roller-crimping

Creating Resiliency Through Diversity With Crops and Livestock



Friday, June 28
10 a.m. – Noon

585 Saint Rose Road
Cuba City, WI 53807

HOSTS

Kevin Wagner & family
KC Stock and Crop LLC



RSVPs appreciated at
practicalfarmers.org/field-days

Kevin Wagner raises beef cattle and grows corn, soybeans, alfalfa, oats and wheat on his family farm near Cuba City, Wisconsin. As the farm transitioned out of the dairy business, Kevin's goal was to diversify their operation – a goal he continually strives for in his crops and livestock. Kevin has been fine-tuning his rotations to maintain high yields while reducing inputs. He has also added cover crops and integrated livestock.

Now, with a more diverse crop rotation and other pieces of on-farm diversity falling into place, Kevin is ready to share what he has learned. Kevin will discuss his use of small grains and alfalfa in his rotations, how his rotations support his livestock operation – which includes raising cows from start to finish – and what he has learned about planting soybeans green into cover crops.

SPONSORS

Scott Implement
Sloan Implement
Welter Seed and Honey Company

MEAL

Lunch will follow the field day.

See & Discuss

- Growing winter wheat for forage with an underseeding of alfalfa to establish for two years of hay cuttings
- Growing frost-seeded oats for grain harvest and straw with an underseeding of alfalfa as a legume cover crop
- Planting soybeans green into living cover crops
- A Great Plains drill with custom in-furrow fertilizer system

Hands-On Field Day at Garden Oasis Farm



Sunday, June 30
9 a.m. - Noon

Coggon, IA 52218

Complete event details will be provided upon registration.

HOSTS

T.D. & Sarah Holub | Garden Oasis Farm



REGISTRATION REQUIRED at
practicalfarmers.org/field-days

T.D. and Sarah Holub are working hard to create a diverse and sustainable farm to improve the health of people in their community. They started farming vegetables at Garden Oasis Farm in 2013 on a half-acre. Now, their farm is a 10-acre operation that includes high tunnels and greenhouses. T.D. and Sarah also have a pasture-raised broiler operation to further diversify their farm. They market through a CSA and farm-side pick-up program, and sell their produce and meat wholesale to grocery stores and restaurants. At this field day, you'll have a chance to learn about and test a variety of hand tools, gain in-depth experience with transplanting crops and more.

FARM INFO

Facebook: Garden Oasis Farm

Instagram: @gofarmveggies

Website: gofarmveggies.com

SPONSOR

Beginning Farmer and Rancher Development
Program Project, Department of
Horticulture, Iowa State University

MEAL

Refreshments will follow the field day.

REGISTRATION REQUIRED

Due to the hands-on nature of this event, attendance is limited to 20 participants and registration is required. Complete event details, including address, will be provided upon registration.

See & Discuss

- Greenhouse organization and work flow
- Hand tools, their purpose and how to use them
- The process and equipment used to transplant crops
- Cultivation tools, and what they look like in action
- The washing and packing facility

Agriculture Supporting Community: Cultivating Food, Habitat and Leaders at Mustard Seed Community Farm



Sunday, June 30
3–5 p.m.

366 W Ave.
Ames, IA 50014

HOST
Alice McGary
Mustard Seed Community Farm



RSVPs appreciated at
practicalfarmers.org/field-days

The purpose of Mustard Seed Community Farm is to grow good, healthy food in an ecological way, and to share that food with whoever needs it. Alice McGary owns the land and is the chief farmer, but the farm operation is entirely volunteer-run. The 13-acre farm includes 3 acres of vegetables that supply produce for around 50 CSA shares every week, plus another 5 acres in restored prairie, a smattering of sheep and chickens and a diverse mix of perennial food crops.

As part of its mission, Mustard Seed works with nine community partners to share food with those who need it. The initiatives include delivering vegetables to medical clinics that patients may take for free, supplying local food pantries and feeding individuals who connect via referrals. Come to this field day to revel in the joy of community connection and support at a farm unlike any other.

SPONSORS

Iowa Interfaith Power & Light
Iowa State University Organic Ag Program
Wheatsfield Cooperative
Women, Food and Agriculture Network (WVAN)

MEAL

Summer snacks will follow the field day.

FARM INFO

Facebook: Mustard Seed Community Farm
Website: mustardseedfarm.org

📍 LOCATION NOTES

People can park on the road, but the ditch is steep. A few cars can park on the place. A volunteer will help manage parking.

See & Discuss

- Partnering with community food pantries and health organizations to feed people in need
- On-farm research trials on honeyberries and onion thrips
- Cultivating leaders on the farm to manage different but intersecting enterprises, such as a cut-flower enterprise
- Operating a volunteer-run farm
- Seed-saving for vegetables

Nutrient Management Using Intercropping in an Organic Operation



Tuesday, July 2
10 a.m.-Noon

18663 110th St.
Maynard, IA 50655

HOSTS
Scott & Catherine Wedemeier
Grassway Farm



RSVPs appreciated at
practicalfarmers.org/field-days

Scott and Catherine Wedemeier own and run an organic dairy and row crop operation called Grassway Farm in Fayette County, Iowa. Scott is the third generation in his family to farm the land, which grew from a small, diversified livestock farm to a larger dairy operation. He has been involved since 2003, growing the herd and row crop acres and initiating the farm's three-year transition to becoming certified organic in 2017.

To provide nutritious forage for livestock and reduce weed pressure to cash crops, Scott incorporates polycultures wherever possible and has noted a dramatic improvement in soil quality. Join the Wedemeiers to hear their story, see cover crop mixes and small grain-legume intercropping and learn how these practices benefit the whole farm.

SPONSORS

- Byron Seeds
- Farming for Public Health
- Farm Nutrients
- Iowa State University Organic Ag Program
- Mad Capital
- MOSA Certified Organic
- OCIA Chapter 1 of Iowa
- Riverside Feeds, LLC

MEAL

A light meal will follow the field day.

See & Discuss

- Intercropping to manage nutrients
- Replacing corn silage with an 18-way cover crop mix chopped for silage
- Diversifying rotations with small grains underseeded with legumes
- Using a baled oats, barley and pea forage mix
- Equipment for seeding and chopping

Growing, Processing and Marketing Onions and Potatoes for Wholesale Outlets



Wednesday, July 10
10:30 a.m.–2 p.m.

3622 Dogwood Ave.
Fertile, IA 50444

HOSTS

Steve Rachut | Kittleson Brothers
Ron Rachut | Fertile Valley Gardens



RSVPs appreciated at
practicalfarmers.org/field-days

A few fields near Fertile, Iowa, look different than others in the area. Kittleson Brothers, owned by Steve Rachut, grows 30-plus acres each of onions and potatoes. Steve's uncle, Ron Rachut, grows an additional 2 acres combined of each crop, having downsized during retirement, at nearby Fertile Valley Gardens. Steve and Ron each grow their crops primarily for wholesale markets. At this enterprise scale, production, handling, packing and marketing look different to most direct-market farms in Iowa. But operations this size are important for fulfilling state and regional demand for food.

This field day will visit two sites. We'll start at the Kittleson Farms site, at 3622 Dogwood Ave., to discuss machinery and crop fields, followed by lunch at noon. Then we'll move to Fertile Valley Gardens, at 3551 Dogwood Ave., to see Ron's vegetable handling and packing facility.

SPONSORS

Beginning Farmer and Rancher Development
Program Project, Department of
Horticulture, Iowa State University
Healthy Harvest of North Iowa
Iowa Specialty Crop Growers Association

MEAL

A light lunch will be served at noon.

FARM INFO

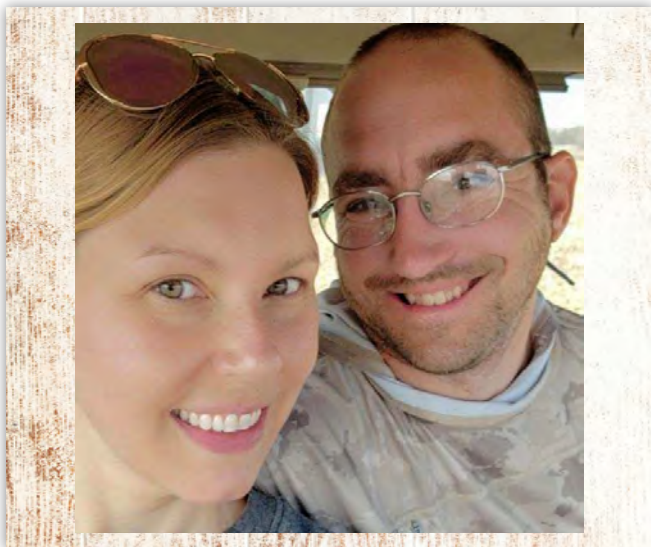
Facebook: Kittleson Bros

Website: kittlesonbrothers.com

See & Discuss

- Broad-acre production of onions and potatoes
- Equipment and implements for onion and potato production at scale
- Fertility and management of muck soils (~50% organic matter)
- Pest management for onions and potatoes
- Processing crops (washing, grading, sorting, packing) for a wholesale market
- Storage and a warehouse for bulk crops

Innovative Strategies for Diversifying a Row Crop Operation



**Wednesday, July 10
4-6 p.m.**

**2507 Quince Ave.
Corning, IA 50841**

HOSTS

**Chris & Shannon Gaesser
GX Agriculture**



**RSVPs appreciated at
practicalfarmers.org/field-days**

Chris and Shannon Gaesser farm just over 4,000 acres of corn, soybeans and small grains near Corning, Iowa. Together, they also run GX Agriculture, a farm service business that sells and custom-applies cover crop seed. They grow and harvest rye as cover crop seed and as grain for Revelton Distillery in Osceola, Iowa. Shannon and Chris follow their corn and soybeans with a rye, triticale or other small-grain cover crop. They also take part in several research trials studying a range of topics, from nitrogen fixation and biological fertilizers to drone applications. Join the Gaessers at their field day to explore innovative strategies for diversifying rotations and establishing partnerships to build a resilient farm and business.

SPONSORS

Iowa Agriculture Water Alliance
Iowa Soybean Association Research Center
for Farming Innovation
Iowa State Department of Agronomy
Mad Capital

MEAL

A light meal will follow the field day.

FARM INFO

Facebook: GX Agriculture
Instagram: @farmingwithshannon
Website: gxagriculture.com

See & Discuss

- Management strategies for small grains
- A Walker combine modified to clean grain
- Grazing neighbors' livestock on cover crops
- Finding niche markets for small grains
- On-farm research exploring perennial ground cover, biologicals, nitrogen fixation and more

Organic U-Pick Blueberries and Day-Neutral Strawberries at Blueberry Bottom Farm



Thursday, July 11
10 a.m.-Noon

3316 Hwy 78
Brighton, IA 52540

HOST
Kim Andersen
Blueberry Bottom Farm



RSVPs appreciated at
practicalfarmers.org/field-days

Kim Andersen's operation at Blueberry Bottom Farm has seen incredible growth in recent years since planting 5 acres of organic blueberries in 2017. The demand for her fruit and the enthusiasm of her customers has increased steadily, giving Kim the opportunity to learn many production and marketing lessons. From managing crop pests (including furry critters!), to irrigation and variety selection, to issues like what to do when demand exceeds supply and how to communicate clearly about U-pick hours and practices, these lessons have helped Kim successfully grow her business. For the coming season, Kim is branching out from blueberries with day-neutral strawberries and is excited to share what she's learned about this new venture.

SPONSORS

Iowa Farmers Union
Iowa Organic Association
Iowa Specialty Crop Growers Association
Iowa State University Organic Ag Program
OCIA Chapter 1 of Iowa
Sustainable Iowa Land Trust
Women, Food and Agriculture Network (WFAN)

MEAL

A light lunch will follow the field day.

FARM INFO

Facebook: Blueberry Bottom Farm
Instagram: Blueberry Bottom Farm
Website: blueberrybottomfarm.com

📍 LOCATION NOTES

For drivers coming from the west: Due to construction on state Route 78 west of Brighton, you will need to take an alternate route to reach the farm. Instead of Route 78, take state Route 92 to Washington, then take state Route 1 south to Brighton. Turn east onto Route 78 and continue to Blueberry Bottom Farm.

See & Discuss

- Establishing and maintaining organic blueberries
- Pest control methods for blueberries, including OMRI-labeled products and exclusion fencing
- Running a successful U-pick operation

Communicating Cuts Workshop: From Carcass to Consumer

In partnership with Land Stewardship Project



Saturday, July 13
9 a.m.–3 p.m.

Spring Grove, MN 55974
Complete event details will be provided upon registration.



REGISTRATION REQUIRED at
practicalfarmers.org/field-days

Between an animal grazing in the field and a meal on your customers' plate lies a maze of possibility and decision. What are the cuts of meat and how do they differ? What about cooking times or tips? Customers often rely on you, as the farmer, to guide them through the options. As a result, part of your roll is shaping expectations for the meat they receive.

Come learn as Cecka Parks, of the Minneapolis Meat Collective, breaks down half a lamb, explains how the cuts relate to each other and shares basic rules of thumb for cooking based on what part of the animal the cut comes from. Then learn from food photographer Tiffany Alexandria of Choochoo-ca-Chew how to affordably take attractive photos of meat with your phone to use in marketing. Everyone will go home with their own photos of grass-fed lamb cuts.

REGISTRATION REQUIRED

Due to the interactive nature of this workshop, attendance is limited to 20 participants and registration is required. Complete event details, including address, will be provided upon registration.

SPEAKERS

Cecka Parks – Minneapolis Meat Collective
Tiffany Alexandria – Choochoo-ca-Chew

MEAL

The event will feature a potluck lunch. An entree will be provided; attendees are encouraged to bring a side or dessert to share.

See & Discuss

- What to consider in preparing grass-finished meat
- Where cuts come from on a carcass and how that affects other options
- Basic cooking rules based on the source of cuts
- How to take good photos of food

Setting Up a Multi-Species Grazing Operation



Tuesday, July 16
3–5:30 p.m.

1087 W 34109 Mapleton Rd.
Oconomowoc, WI 53066

HOSTS

Michael & Courtney Gutschenritter
Three Brothers Farm



RSVPs appreciated at
practicalfarmers.org/field-days

Michael and Courtney Gutschenritter, along with their three small children, own and operate Three Brothers Farm in Oconomowoc, Wisconsin. The 100-acre farm is conservation-focused, planted entirely in perennials. The Gutschenritters produce pasture-raised eggs from 2,800 laying hens; grass-fed lamb; wool blankets and sheepskins from their flock of 120 Shetland sheep; and custom-graze 25 of their neighbor's bred dairy heifers. They sell their eggs in local grocery stores and direct-market their lamb and wool products.

They also make and sell innovative farm manuals, including their sliding fence system for their chickens, which allows them to move their coops and electric netting without handling. Join Michael and Courtney to learn how they bring a conservation mindset to establishing, managing and marketing their multi-species grazing operation.

SPONSORS

Cashton Farm Supply Ltd
Glacierland RC&D
Premier 1 Supplies

MEAL

A meal will follow the field day.

FARM INFO

Facebook: Three Brothers Farm

Instagram: @3brothersfarm

Website: 3brothersfarmwi.com

See & Discuss

- Building innovative, beginner-friendly fencing
- Planning ways to add wildlife habitat into a grazing operation
- Financial planning and value-added products
- Creating a multi-species grazing operation

Grundy County Workshop: Biologicals, the Hot Topic



Thursday, July 18
9 a.m.–Noon

308 4th St.
Grundy Center, IA 50638

HOSTS

**Fred Abels, Courtney Myers &
Grundy County SWCD**



RSVPs appreciated at
practicalfarmers.org/field-days

This workshop held at the Grundy County Fair brings farmers together to learn about and discuss different field crop topics. This year, the workshop will be led by farmer Fred Abels and district conservationist Courtney Myers with the Grundy County Soil and Water Conservation District. Come hear farmers’ experiences with biological products, how they make their own compost tea and how these products fit into their operations.

Josh Nelson and Ryan Gibbs, both farmers who work with Singular Agronomics, will share their use of biological products and how these products work on their own farms. If you’ve wondered about biological products, this event is a chance to ask questions and discuss how these products can affect the bottom line

SPEAKERS

Ryan Gibbs – Farmer and dealer with Singular Agronomics
Josh Nelson – Farmer and dealer with Singular Agronomics

MEAL

Lunch will follow the workshop.

FARM INFO

Website: grundyiaswcd.com

See & Discuss

- Evaluating crop benefits and financial returns on biological products
- Making compost extract and best practices for storing
- How to apply biological products, including at planting and foliar application
- Fitting biological products into a crop management plan

Going With the Grain: Diversified, Small-Scale Grain Farming With On-Farm Processing



Friday, July 19
4-6:30 p.m.

14041 Kelley Rd.
Pecatonica, IL 61063

HOST

Andrea Hazzard
Hazzard Free Farm



RSVPs appreciated at
practicalfarmers.org/field-days

Andrea Hazzard farms heirloom corn, oats, wheat, barley, rye, flax and other small grains, oilseeds and dry beans on Hazzard Free Farm, her small farm outside of Pecatonica, Illinois. After starting with a small vegetable CSA in 2007, Andrea decided to switch to grain production in 2012. Building on what she learned from her farming family growing up, she has expanded her diversity of crops and underseeds all her small grains with clover to increase ground cover and stabilize nutrient flow. She processes all her own grains and sells to local restaurants, grocers and co-ops, along with shipping her orders. Andrea is eager to share her seed-saving process, show her diversity of crops and walk through steps for processing and marketing food-grade grains.

LOCATION NOTES

The field day will begin at 14041 Kelley Road. Later during the field day, attendees will caravan to the second location at 5111 Ahrens Road, about 6 miles away.

SPONSOR

UW-Madison OGRAIN

SPEAKER

Leslie Schroeder - Wisconsin Linen Revival

MEAL

A light dinner will follow the field day at 5111 Ahrens Road.

FARM INFO

Instagram: @hazzardfreefarmgrains

Website: hazzardfreefarm.com

See & Discuss

- Heirloom corn in the field
- How to operate a seed-saving and gravity table
- Trying out flax for seed, oil and fiber
- Storing, handling and milling food-grade grains amidst a feed-grade operation
- Small grains underseeded with clover
- Marketing opportunities for food-grade grains
- Navigating federal programs and certification processes

Growing Food for Habitat: Supporting Pollinators and Beneficial Insects in a Community Garden

In partnership with Xerces Society



Saturday, July 20
10 a.m.-Noon



905 Franklin St.
Waterloo, IA 50703

HOST
Kamyar Enshayan



RSVPs appreciated at
practicalfarmers.org/field-days

Peoples Community Health Clinic Garden near downtown Waterloo, Iowa, is a nonprofit clinic serving the local community, regardless of insurance status. The clinic operates a garden that distributes fresh vegetables twice a week for clinic patients, dubbed the Peoples Community Garden. In partnership with Xerces Society, the garden has tried to improve upon existing habitat and create new habitat for pollinators and beneficial insects that, in turn, support local food systems. Join the clinic’s garden director, Kamyar Enshayan, and Xerces Society’s Sarah Nizzi, as they discuss ways you can create needed habitat in your own urban gardens or urban farm.

SPEAKER
Sarah Nizzi - Xerces Society

MEAL
No food will be served at this field day.

SPONSORS

- Farming for Public Health
- Iowa Farmers Union
- National Young Farmers Coalition

See & Discuss

- Helping communities through urban gardening and sourcing local food
- Creating pollinator and beneficial insect habitat in limited and urban spaces
- Improving urban soil quality through sustainable practices, such as composting
- Pesticide-free urban garden management
- Using cover crops in urban farming for extended soil and insect support

Centering Sustainability From Farrow to Finish



Tuesday, July 23
9-11 a.m.

4077 110 Ave. NE
Kerkhoven, MN 56252

HOST

Andrew VanDerPol
Pastures A Plenty



RSVPs appreciated at
practicalfarmers.org/field-days

Since 1952, the VanDerPols have been raising hogs at Pastures A Plenty near Kerkhoven, Minnesota. As part of the fourth generation, Andrew is in charge of the pigs on this farm that is guided by the principles of environment, family, community and long-term profitability. Come learn from Andrew how those values manifest in their production system today. We'll see all the stages of a pig's life on the farm, from the gestation barn, to the farrowing barn (rebuilt from an old hog building and featuring geothermal cooling), to growing and finishing in deep-bedded systems. Finally, Andrew will share how his family direct-markets up to 700 hogs a year.

Due to biosecurity practices, booties will be passed out at the end of the driveway.

SPONSOR

MOSA Certified Organic

MEAL

No food will be served at this field day.

FARM INFO

Facebook: Pastures A Plenty Farm & Co

Website: pasturesaplenty.com

See & Discuss

- Repurposing old infrastructure
- Geothermal cooling for pigs
- Gestating, farrowing and finishing pigs
- Putting farm principles into practice

THANK YOU TO OUR LEVEL B SPONSORS!



IOWA SPECIALTY
CROP GROWERS
ASSOCIATION





The University of Iowa • Iowa State University
Iowa Department of Agriculture and Land Stewardship
Iowa Health and Human Services • Non-Profits for Farm Health



TH FABRICATION
METAL FABRICATION - CUSTOM MANUFACTURING
OEM PRODUCTS



Improving Soil Through Nitrogen Reduction and Conservation Practices



Wednesday, July 24
2-4 p.m.

3386 Hickory Ave.
Osage, IA 50461

HOSTS
Alec & Rachel Amundson



RSVPs appreciated at
practicalfarmers.org/field-days

Alec and Rachel Amundson operate a 100% cover cropped, no-till corn and soybean farm spanning 2,400 acres in Mitchell County, Iowa. In 2018, they started experimenting with cover crops on a small number of acres. Since then, they have found new rotation options that work for them, including diversified rotations, alternative crops and managing inputs such as variable-rate fertilizer and seed.

In 2020, Alec and Rachel started participating in PFI's Cooperators' Program to answer questions about their farm through on-farm research. One recent trial explored the impact of reducing nitrogen. With guidance and tips from other farmers, they have made adjustments to in-field and edge-of-field practices that benefit their farm's soil and water quality. Join Alec and Rachel for a lively discussion and tour of their cropping and edge-of-field conservation practices.

SPONSORS

Grain Millers
Iowa Agriculture Water Alliance

MEAL

Light refreshments will be provided during the field day.

See & Discuss

- Relay intercropping cereal rye and soybeans
- No-till corn and soybean production with covers
- Use of a bioreactor and the Conservation Reserve Program
- Fixing nitrogen by interseeding red clover into small grains
- Results of a nitrogen reduction on-farm research project through PFI's Cooperators' Program
- Using cover crops to improve water quality in the Rock Creek Watershed

Growing Opportunity: Season Extension, Organic Production and Scaling Up at Bridgewater Farm



Sunday, July 28
4-7 p.m.

2409 Brown Ave.
Bridgewater, IA 50837

HOST
Dale Raasch
Bridgewater Farm



RSVPs appreciated at
practicalfarmers.org/field-days

Dale Raasch started growing vegetables commercially in 2007. Since then, Bridgewater Farm has grown into Iowa's largest certified organic vegetable farm, with 25 acres in production, four high tunnels operating for the past 10 years and eight more high tunnels newly built in spring 2024. Dale and his crew grow a wide variety of produce, including tomatoes, melons, sweet corn, spinach, peppers, carrots, summer and winter squash and more.

Bridgewater Farm produce is sold at farmers markets in Omaha and Des Moines and at about 15 Hy-Vee stores in Iowa, though the number of stores is expected to at least double with the extra high tunnel space. As an Iowan and a farmer, Dale is passionate about increasing Iowa's food security by growing food for our state. And he is eager to share and inspire beginning and emerging farmers to do the same.

SPONSORS

Iowa Farmers Union
Iowa Specialty Crop Growers Association
Iowa State University Organic Ag Program

MEAL

A meal will follow the field day.

FARM INFO

Facebook: Bridgewater Family Farm

Website: bfproduce.com

See & Discuss

- The potential of season extension to increase production and profit with tomatoes, spinach, greens and (new in 2024!) day-neutral strawberries
- Pest management through crop diversity, multiple plantings and higher tolerance to avoid spraying and save on labor
- Companion planting and interplanting to increase diversity and maximize production
- Equipment to increase efficiency and capacity

Establishing and Growing a Cover Crop Seeding and Service Business



Tuesday, July 30
10:30 a.m.–12:30 p.m.

2451 J Ave.
Stanley, IA 50671

HOSTS

Dan & Jessica Bahe
Bahe Cover Crops



RSVPs appreciated at
practicalfarmers.org/field-days

Dan Bahe and his father, Don, first dabbled in cover crops 10 years ago with rye spread by their local co-op on an 80-acre seed corn field. The following year, they bought their own 15-foot drill and some cover crop seed and never looked back, seeding for neighbors in addition to their own acres. Dan took over the operation in 2015 and has gradually grown the business to about 5,000 acres that he seeds today.

With the help of his wife, Jessica, Dan has enjoyed adding other services to the mix, such as selling humic and fulvic products, selling equipment and parts online and advising on cost-share opportunities. Come hear Dan’s tips for getting started in the cover crop seeding business, with a close look at helpful equipment for growing your operation.

SPONSORS

Continuum Ag
 Iowa Agriculture Water Alliance
 Iowa Cover Crop

MEAL

Lunch will follow the field day.

FARM INFO

Website: bahecovercrops.com

See & Discuss

- Overcoming challenges to getting started with custom cover crop seeding
- Balancing priorities: acres vs. profitability vs. family time
- Diversifying a custom-seeding business by offering extra services
- Making the switch to full-time farming with the help of a cover crop business
- Finding the right equipment to grow your operation
- A Crustbuster 40-foot drill, a J&M LC390 and bulk seed bins

Adaptive Marketing Through a Collaborative CSA, Value-Added Products and On-Farm Sales at Buffalo Ridge Orchard



Sunday, Aug. 4
1:30–4 p.m.

1337 Rollins Rd.
Central City, IA 52214

HOSTS

Marcus & Emma Johnson
Buffalo Ridge Orchard



RSVPs appreciated at
practicalfarmers.org/field-days

Farmers Marcus and Emma Johnson are in their 13th year of production at Buffalo Ridge Orchard, where they raise 5 acres of vegetables, 2 acres of pears and 15 acres of apples. Their business approach has been strategic, creative and collaborative, benefitting other farmers as well as customers in their local food ecosystem. They build a collaborative CSA by aligning crop planning with nearby farmers. They developed products with sensitivity to their market context, thus adding to the local product mix without creating direct competition. They also pivoted to delivery and on-farm sales when farmers markets were not an option. In short, Marcus and Emma have made their farm thrive and brought others along on their journey.

SPONSORS

Iowa Organic Association
Iowa Specialty Crop Growers Association

MEAL

Pie and ice cream will follow the field day.

FARM INFO

Facebook: Buffalo Ridge Orchard
Website: buffaloridgeorchard.com

See & Discuss

- Using adaptive marketing to be efficient and competitive
- Managing a collaborative CSA
- Developing value-added products with dried apples
- Building planning systems to manage complex operations
- Viewing an apple processing demonstration
- The farm store, apple orchard and vegetable fields

Central Nebraska Cover Crop Workshop



Tuesday, Aug. 6
9 a.m.–4 p.m.

76268 NE-47
Gothenburg, NE 69138

HOST
Practical Farmers of Iowa



RSVPs appreciated at
practicalfarmers.org/field-days

Join farmers in central Nebraska for a day of exploring all things cover crop-related! Farmers of all experience levels are encouraged to attend to learn with and from other farmers on what does and doesn't work with cover crops. We'll discuss the role of cover crops in drought conditions, how they benefit soil health and the opportunities they provide for livestock feed and reducing inputs. We will have a chance to visit on-site research fields and hear from the researchers who manage them. Come network with other farmers while exploring how to make cover crops work in Nebraska.

This event is free and open to all but preregistration is appreciated. A social gathering will follow at Good Life Gothenburg. Check the webpage for location.

SPONSORS

ADM re:generations
Center for Rural Affairs
Green Cover Seed
Roberts Seed Inc.

MEAL

Lunch will be provided. Dietary restrictions will be taken into account with advanced registration.

LOCATION NOTES

The event location is also sometimes called Monsanto Water Utilization Learning Center. Please use the street address to locate the event.

See & Discuss

- Getting started with cover crops
- The economics of incorporating cover crops
- Increasing water infiltration in the soil
- Opportunities for grazing livestock on cover crops
- Cutting herbicide inputs and improving weed suppression

Boots on the Ground: Tips for Transitioning to No-Till



Friday, Aug. 9
1-3:30 p.m.

2611 17th St. N
Sartell, MN 56377

HOSTS

Alex & Krissy Udermann, John Udermann
and Jake Udermann | Meadowbrook Dairy, Inc.



RSVPs appreciated at
practicalfarmers.org/field-days

Alex and Krissy Udermann own and operate Meadowbrook Dairy near Sartell, Minnesota, alongside Alex's father, John, and brother, Jake. Their farm includes a 1,000-acre row crop operation, which is 100% no-till, along with 80 dairy cows and 300 beef steers. They also grow cereal rye for seed, use cover crops extensively, custom-haul liquid and solid manure and do custom no-till planting and cover crop seeding. Passionate about caring for their soil health, the Udermanns recently started composting to grow fungal biology and are working to reduce their commercial fertilizer use.

They are also certified through Minnesota's Agricultural Water Quality Certification Program, which gives farmers an option to receive five other endorsements for conservation efforts ranging from soil health to wildlife. The Udermanns are proud to have achieved all five. If you're curious about cover crops, transitioning to no-till and other practices that build more resilient soil, don't miss this chance to learn from the Udermann family.

LOCATION NOTES

17th Street N reaches a dead end on either side of Bakers Lake. Meadowbrook Farm is located on the west side of the lake. Check your directions beforehand to make sure you are heading to the correct location.

MEAL

Snacks and beverages will be provided during the field day.

FARM INFO

Facebook: Meadowbrook Farm

SPONSORS

Arnold's

Kanati Land Management LLC

See & Discuss

- Meadowbrook Farm's step-by-step process to success with no-till and cover crops
- No-till air drill and corn planter demonstrations
- Nutrient management using manure and compost in a 100% no-till operation
- In-field assessments of crop roots and soil quality

Honing Pasture Management With Rotational Grazing + Cover Crops



Saturday, Aug. 10
3–5 p.m.

1222 Ironwood Rd.
Harlan, IA 51537

HOSTS

David Rosmann & Becky Tompkins–Rosmann,
Ron Rosmann & Maria Vakulskas Rosmann,
Daniel Rosmann & Ellen Walsh–Rosmann,
Mark Rosmann & Virginia Lehner–Rosmann
Rosmann Family Farms and Farm Sweet Farm



RSVPs appreciated at
practicalfarmers.org/field-days

David Rosmann operates Rosmann Family Farms in Harlan, Iowa, with his wife Becky and their two daughters, Maggie and Ellie, his parents Ron and Maria and other family members. Their 700-acre certified organic farm is a mixture of field crops, pasture, popcorn, small grains and hay as well as cattle and hogs. David is a lifetime member of PFI currently serving as president of PFI's board of directors. His parents were among the first PFI members and on-farm research cooperators.

Strong proponents of rotational grazing, the Rosmanns pay close attention to the health of their pastures at all stages of their grazing calendar. At this field day, you'll learn how the Rosmanns manage pasture outside of grazing periods. David will discuss the cool- and warm-season planting mixes that accompany each grazing period. He'll share how the farm lowers its overall inputs by composting manure. You'll also hear how the Rosmanns seed rotational cover crops, such as hybrid rye, for livestock feed and as a supplement for cattle and hogs.

SPONSORS

Farming for Public Health
Iowa Organic Association
Iowa State Department of Agronomy
Iowa State University Organic Ag Program
OCIA Chapter 1 of Iowa
Premier 1 Supplies
Riverside Feeds, LLC
Sustainable Iowa Land Trust
Wheatsfield Cooperative

MEAL

Dinner will follow the field day.

FARM INFO

Facebook: Farm Sweet Farm
Website: farmsweetfarmiowa.com

See & Discuss

- Timing rotational grazing practices based on farm and livestock needs
- Rotating and interseeding cool- and warm-season small grains for continual grazing
- Converting cropland to pasture and deciding on pastureland duration
- Using compost and cattle on the land to reduce inputs in the soil
- Using rye and hybrid rye as supplemental feed to reduce corn feed, and deciding which is best for you

PFI Member Day at the Iowa State Fair



Tuesday, Aug. 13
8 a.m.–Noon

3000 E Grand Ave.
Des Moines, IA 50317

HOST
Practical Farmers of Iowa



RSVPs appreciated at
practicalfarmers.org/field-days

Practical Farmers of Iowa is excited to host “PFI Member Day at the Iowa State Fair.” Many PFI staff will attend and we look forward to seeing long-time members and meeting newer ones. How will we find each other? From 8-11 a.m., PFI staff will be outside the fairgrounds near Gate 8 (*along Dean Avenue*) and near Gate 2 (*along University Avenue*), handing out free PFI T-shirts to members. Explore the fair with other PFI members and staff, then meet at noon for a group photo in front of the Agriculture Building.

RSVPs are appreciated by Monday, July 15 to guarantee a T-shirt. Sign up online, by emailing katie.aupperle@practicalfarmers.org or by calling (515) 232-5661. If you’d like to pick up your T-shirt early, please stop by the PFI office in Ames after Aug. 5 during business hours (9 a.m.–5 p.m.).

Save \$5 on your fair tickets by buying in advance online at iowastatefair.org or check your local Hy-Vee or Fareway.

Relay-Cropping and Reducing Inputs To Achieve Regenerative Resilience



Friday, Aug. 16
10 a.m.–Noon

10929 300 St. W
Illinois City, IL 61259

HOSTS

Keith Gorham and Blain Gorham
Gorham Family Farms



RSVPs appreciated at
practicalfarmers.org/field-days

Keith Gorham and his family have been farming regeneratively since 2016 on 500 acres near Illinois City, Illinois, just miles from Muscatine, Iowa. They grow winter wheat, soybeans and corn and raise cattle, pigs, goats and a few chickens. By adopting regenerative agriculture practices, Keith aims to increase profitability per acre by reducing inputs all while improving soil health.

On their journey to build a resilient farming operation, they've had successes and learned lessons that Keith will share during his field day. Join us to learn the latest about Keith and his son Blain's work to relay-crop winter wheat and soybeans, cut nitrogen in corn and use a roller-crimper on their cereal rye cover crop.

SPONSORS

Continuum Ag
Precision Conservation Management

MEAL

Lunch will follow the field day.

See & Discuss

- Relay-cropping winter wheat and soybeans
- A corn field with zero applied nitrogen
- Using a roller-crimper
- Experiences with a PFI on-farm research trial on timing of roll-crimping
- Whole-farm management and profitability with regenerative agriculture
- Equipment used on Gorham Family Farms, including a roller-crimper, drill and manure spreader

Make Way for Pheasants: Assessing Habitat Potential on Marginal Acres

In partnership with Pheasants Forever



Wednesday, Aug. 21
9 a.m.–12:30 p.m.



39750 820th St.
Lakefield, MN 56150

HOSTS

Jerry & Nancy Ackermann



RSVPs appreciated at
practicalfarmers.org/field-days

Jerry and Nancy Ackermann, alongside Pheasants Forever, have restored a 3.4-acre prairie habitat, home to pheasants, deer, essential pollinators and other wildlife, through a process called precision conservation. The Ackermanns started conservation efforts on their 1,200-acre corn, soybean and small grains farm in 2019 with the interseeding of cover crops into corn to create a sheltered space for pheasants.

Most recently, they have put in a pond and worked with the Natural Resources Conservation Service to create better drainage so there's less runoff from their farm. Join Jerry and Nancy at their field day, along with Pheasants Forever and the Minnesota Soil Health Coalition, as they explore conservation methods to improve soil quality and create quality habitat from unproductive acres.

SPEAKERS

**BJ Werk and Scott Rall - Pheasants Forever
 Minnesota Soil Health Coalition**

MEAL

Lunch will follow the field day.

See & Discuss

- Precision conservation using soil and yield mapping data
- Increasing soil health by creating more efficient tile drainage
- A rainfall simulator demonstration that shows varying drainage types around the farm
- Creating pollinator habitat through data analysis and eco-typical seed selection using Environmental Quality Incentives Program grants

Scaling Up Custom Cover Crop Application



Friday, Aug. 23
10 a.m. – Noon

3119 Reading Trail
Logan, IA 51546

HOSTS

Mike & Kara Dickinson and Mark Unruh
Mike Dickinson Farms | East Valley Poultry |
CoverPro 365



RSVPs appreciated at
practicalfarmers.org/field-days

Mike and Kara Dickinson own and operate Mike Dickinson Farms near Logan, Iowa, growing corn and soybeans, raising a cow-calf herd and running a commercial broiler chicken operation called East Valley Poultry. After farming part-time for 12 years, Mike dove into farming full-time in 2019 and started a custom cover crop application business called CoverPro 365 with business partner, Mark Unruh.

Together, they have been focusing on scaling up their seeding applications with seed from Iowa Cover Crop to make cover crops more accessible for large-scale farms. Come learn how to grow a cover crop seeding business, see the seeding equipment Mark and Mike use and explore Mike's fertilizer management and cover crop strategies on his own farm.

SPONSOR

Iowa Cover Crop

MEAL

Lunch will follow the field day.

See & Discuss

- Starting a cover crop seeding business
- Tips for scaling up cover crop seeding application
- A custom-built rolling basket harrow air seeder
- A teff grass-oat-alfalfa cover crop mix in the field
- Nutrient management using chicken litter and livestock grazing
- Managing cover crops in drought conditions



Hands-On Poultry Processing at Mad Acre Farms



Sunday, Aug. 25
9 a.m.–1 p.m.

Gladbrook, IA 50635

Complete event details will be provided upon registration.

HOSTS

Ryan & Jamie Madison | Mad Acre Farm



REGISTRATION REQUIRED at
practicalfarmers.org/field-days

Beginning farmers Ryan and Jamie Madison founded Mad Acre Farm in 2020. Mad Acre is a 4-acre farm consisting of a market garden, a 240-square-foot greenhouse, a high tunnel and pastured chickens. Ryan and Jamie are also starting out with microgreens along with learning hydroponics. They sell their produce, meat and eggs directly to consumers through their CSA. To grow their market and foster community, they make playful educational videos on social media platforms and write a blog for their website. They are also currently working toward creating an agritourism component to their farm. Join the Madisons for this hands-on look at a pasture-raised poultry enterprise, from getting started to processing and marketing.

FARM INFO

Facebook: MadAcre Farms

Instagram: @mad.acre

Tik Tok: @madacrefarms

Website: madacrefarms.com

MEAL

Lunch will follow the field day.

REGISTRATION REQUIRED

Attendance for this field day will be capped at 15. Complete event details, including address, will be provided upon registration.

See & Discuss

- Getting started with pasture-raised poultry
- Scalding and defeathering
- Packaging to USDA standards
- Marketing your meat

Getting Started With Chestnuts



Tuesday, Aug. 27
9–11 a.m.

3151 F52 Trl.
Parnell, IA 52325

HOST

Elana Gingerich
Olivia's Orchard



RSVPs appreciated at
practicalfarmers.org/field-days

Elana Gingerich grew up on a conventional hog operation but developed a passion for tree crops. Today, she operates Olivia's Orchard (formerly East Holbrook Chestnut Grove), a 40-acre farm with over 10 acres of chestnut trees, a few acres of pawpaw trees and a handful of other fruit and nut trees. Grass-finished beef cattle play a crucial role on the farm: They are rotationally grazed to manage pasture and timber. Elana also operates a nursery supplying chestnut and pawpaw trees for other growers who want to get started in agroforestry.

Join us at this field day to learn from Elana how you, too, can get started with chestnuts, a tree that grows well in Iowa – and which Elana says produces a carbohydrate nut similar to corn.

SPONSORS

Canopy Farm Management
Sustainable Iowa Land Trust

MEAL

Water will be available.

FARM INFO

Facebook: East Holbrook Chestnut Grove
Website: eastholbrookchestnutgrove.us

See & Discuss

- Site preparation for chestnut trees
- The financial aspects of chestnut production
- The chestnut planting process (you'll have a chance to try it out!)
- Market and cash flow options

PFI at the Farm Progress Show



**Tuesday, Aug. 27 –
Thursday, Aug. 29
8 a.m. – 5 p.m.**

**1827 217th St.
Boone, IA 50036**

**HOST
Practical Farmers of Iowa**

**You must purchase tickets to enter the show.
Visit farmprogressshow.com for more information.**

Named one of the nation's largest outdoor farm shows, the Farm Progress Show is hosted in Boone, Iowa, every other year. Hundreds of exhibitors and thousands of farmers from across the country gather to learn about the latest agricultural equipment and supplies, and to participate in live demonstrations. Practical Farmers of Iowa staff and farmers will be located in the Varied Industries tent for the duration of the event. Find our booth to join conversations, ask questions and share practical advice on topics such as cover crops, small grains, grazing, conservation cost-share and more.



Adding Produce to the Mix at Hayes Farm



Thursday, Aug. 29
10 a.m. – Noon

6342 120th Ave.
Storm Lake, IA 50588

HOST

Tate Carlson
Hayes Farm



RSVPs appreciated at
practicalfarmers.org/field-days

Having grown up on a row crop and cattle farm, Tate Carlson is eager to join Hayes Farm, the family business. But after 10 years working on Midwestern produce farms, Tate's vision for the farm goes beyond grain and cattle – it involves raising produce. Three years ago, he started working toward that vision by planting his first produce crops at the farm.

In adapting the farm to include produce, Tate has experimented with production and marketing. To build soil health and fertility, he planted small grains followed by cover crops that are grazed by cattle ahead of planting the produce. To make use of existing resources, he converted field crop equipment to plant vegetables. And to meet the needs of his community and his lifestyle, he focuses on wholesale markets and prioritizes mechanization and efficiency. And Tate is just getting started. He poses the question: What if every Iowa farmer grew just 2 acres of table food? Join us to get a glimpse of what that might be like.

LOCATION NOTES

The field day will start at the vegetable field located one-quarter mile east of the corner of 120th Avenue and 640th Street, just around the corner from the listed farm address. Follow the directional signs from 6342 120th Ave. and you'll find the right place. At noon, we'll move to the home place at 6342 120th Ave. for lunch.

MEAL

Lunch will follow the field day.

See & Discuss

- Adding horticultural crops as an enterprise to row crops and livestock
- Planning how to efficiently grow 5 acres of melons and storage crops such as squash, carrots and cabbage
- Trying no-till production of brassicas planted into crimped rye
- Marketing late-summer crops to schools and selling to food banks
- Field-packing squash, watermelon, cantaloupe and carrots
- Building soil health and fertility
- Growing small grains for milling into flour and meal
- Transitioning the farm to the next generation

Reducing Nitrogen With Rotational Cover Cropping and Biologic Additions



Friday, Aug. 30
4–6 p.m.

1798 JJ Ave.
Marengo, IA 52301

HOST
Ross McCaw



RSVPs appreciated at
practicalfarmers.org/field-days

Ross McCaw has been farming for five years near Marengo, Iowa, where he owns and operates McCaw Custom Farms – but he has been farming his whole life. He specializes in corn, soybeans and cereal rye, and has been planting cover crops since 2019 as a way to reduce his nitrogen inputs. This year, he is striving to bring his nitrogen levels below 100 pounds per acre, down from 120 pounds per acre in 2023.

Ross supports the idea that it's possible to be a conventional farmer and use 100% cover crops while reducing nitrogen. Join Ross as he shares his cover crop tricks of the trade. He'll discuss his rotational cover crop practices, which include planting 1.8 maturity group soybeans for an earlier harvest followed by rye, and explain how this may lead to increased yields in the following corn crop.

SPONSORS

ADM re:generations
Walmart Foundation

MEAL

Dinner will follow the field day.

See & Discuss

- Rotational cover crop practices using a three-year crop rotation of corn, soybean and seed rye
- Planting summer grazing crops after cereal rye for nitrogen fixation
- Nitrogen reduction trials through PFI's Cooperators' Program
- Adding compost extract or other biologics to increase soil health and quality
- Alternating planting times in a three-year cycle for larger harvest yields
- In-field testing of nitrogen and nitrate load using a calcium-chloride test kit

Mindful Growth at Sweet Season Farm



Sunday, Sept. 1
4–6 p.m.

2264 200th St.
Calmar, IA 52132

HOSTS

Carly & Ethan Zierke
Sweet Season Farm



RSVPs appreciated at
practicalfarmers.org/field-days

Beginning farmers Carly and Ethan Zierke own and operate Sweet Season Farm, a 2-acre certified organic veggie farm in Calmar, Iowa. They've recently transitioned to a new farm and are scaling up mindfully by purchasing equipment and building infrastructure with versatility in mind to fit their current needs and their vision for the future. In 2024, they are installing a washing and packing area that includes equipment for washing greens, spray tables and a walk-in cooler built from a 20-foot shipping container. Carly and Ethan direct-market their products locally and sell to wholesale outlets. They've also started a seed enterprise growing flowers, herbs and tomatoes on contract with companies.

Scaling up looks different on all farms. This event is a chance to find out what it looks like for one beginning farm in northeastern Iowa – and how the Zierkes are planning purposefully for growth.

SPONSORS

MOSA Certified Organic
Sustainable Iowa Land Trust

MEAL

Snacks will be provided during the field day.

FARM INFO

Facebook: Sweet Season Farm
Instagram: @sweetseasonfarm
Website: sweetseasonfarmiowa.com

See & Discuss

- Washing and packing infrastructure
- Selling vegetable and flower seeds through seed contracts
- Smart approaches to scaling up
- Adapting small-scale bed preparation styles to a larger acreage

Transitioning Ground and Changing Generations



Tuesday, Sept. 3
10 a.m. - Noon

1582 200th St.
Red Oak, IA 51566

HOSTS

**Matt & Jocelyn Vermeersch, Maggie McQuown
 and Steve Turman | Mud Ridge Ranch**



RSVPs appreciated at
practicalfarmers.org/field-days

Matt and Jocelyn Vermeersch are first-generation farmers now in their second year collaborating on a farm transition with Maggie McQuown outside of Red Oak, Iowa. Besides transitioning generations, they are also working to transition the row crop ground to permanent pasture. Matt is striving to raise healthy animals on year-round grazing and minimal inputs. The row crop ground, currently in cereal rye, will be planted in a warm-season annual mix that will be grazed before planting perennials. Come learn how Matt, Jocelyn and Maggie are making these transitions work and what the vision for their regenerative, grass-based system is.

SPONSORS

Center for Rural Affairs
 Sustainable Iowa Land Trust

MEAL

Lunch will follow the field day.

FARM INFO

Facebook: Mud Ridge Ranch

See & Discuss

- Navigating generational farm transition
- Collaborating for non-family farm transition
- Converting row crop ground to permanent pasture
- Grazing cover crops
- Renovating old infrastructure

Fitting Farming Into Life at Mogo Farms



**Wednesday, Sept. 4
3–5 p.m.**

**2542 Iowa Ave.
Mount Pleasant, IA 52641**

HOST
Morgan Hoenig
Mogo Farms



RSVPs appreciated at
practicalfarmers.org/field-days

Morgan Hoenig started Mogo Farms in 2008 to grow vegetables to feed her community. Over time, her farm has evolved to provide the boundaries and flexibility she needs to accommodate an off-farm job and other responsibilities. For Morgan, flowers have been the key to flexibility and profit on her farm.

Today, with 1.5 acres in production (half flowers and half veggies), a floral design business and a following of customers, Morgan’s farm supports – but does not dominate – her life. Join us at Mogo Farms to learn from Morgan about what she grows, how she right-sizes her marketing and her vision for future farm evolution. Plus, we’ll learn about the impact of installing a 3D deer fence around her field. (Hint: It’s a gamechanger!)

SPONSORS

Iowa State University Organic Ag Program
MOSA Certified Organic

MEAL

Light, summery snacks will follow the field day.

FARM INFO

Facebook: Mogo Organic
Instagram: @mogofarm
Website: MogoOrganic.com

See & Discuss

- 3D deer fencing and on-farm produce safety
- Shifting a farm’s business model to pursue what’s working
- Farming flowers while also operating as a florist
- Online sales
- Growing for industry trends and customer needs – especially brides!
- Growing flowers to support pollinators

Cattle Handling and Grass-Based Genetics



Saturday, Sept. 7
9 a.m.–Noon

1854 275th St.
Winterset, IA 50273

HOSTS

Jake & Crystal Bigelow
Bigelow Family Farm



RSVPs appreciated at
practicalfarmers.org/field-days

Jake and Crystal Bigelow, along with their two children, raise purebred Hereford cattle in a grass-based system, as well as pigs, corn and soybeans. For the past 14 years, Jake has been working towards a sustainable balance among family, farm and finances while feeding his local community with quality products. To that end, he is carefully managing his herd for genetics that thrive on a grass-based system.

Come learn what Jake looks for in cattle and their physical characteristics to decide if they'll do well in his herd. He will also demonstrate techniques for calm and quiet animal handling.

SPONSORS

B B & P Feed & Grain
Riverside Feeds, LLC
Story City Locker LLC

MEAL

Lunch will follow the field day.

FARM INFO

Facebook: Bigelow Family Farm
Instagram: @bigelowfamilyfarm
Website: bigelowfamilyfarm.com

See & Discuss

- Selecting cattle based on phenotypes and epigenetics
- Tools to gauge if cattle will be problem-free and productive
- Reading cattle body language

Establishing New Prairie for Endangered Beneficial Insects on a Century Farm

In partnership with US Fish & Wildlife Service



Saturday, Sept. 7
10 a.m. – Noon

2914 365th Ave.
Camanche, IA 52730

HOST
Julie Martinez



RSVPs appreciated at
practicalfarmers.org/field-days

Julie Martinez and her husband, Jon Kramer, own The Hardy Farm, a 127-acre corn and soybean century farm they lease out in Camanche, Iowa. Built at the end of the Civil War in 1865, Julie inherited the farm from her mother. In November 2023, Julie, along with the U.S. Fish & Wildlife Service, seeded 110 acres into native prairie habitat using a 15-year Conservation Reserve Program contract. This new planting will someday provide critical habitat to several beneficial insect species, such as the imperiled American and rusty patched bumblebees.

Join Julie and Scott James, of the FWS, to explore alternative uses for cropland. They will also discuss the process, look and feel of establishing new prairie, how to maintain it properly from one year to the next and funding options available.

SPONSOR

Iowa Agriculture Water Alliance

SPEAKER
Scott James – U.S. Fish & Wildlife Service

MEAL

Lunch will follow the field day.

See & Discuss

- Various types of CRP funding options
- An overview of the Iowa Department of Natural Resources Prairie Partners Program
- Assessing and preparing a site for a new prairie, and first-year planting expectations
- Managing a new prairie in years 1 to 3
- Controlling weeds and reducing crop encroachment in new prairie
- Identifying young and seedling prairie plants in the field to aid in weed control
- The plight and drastic decline of bumblebee species like the American bumblebee and the endangered rusty patched bumblebee

Making a Livelihood With Livestock: A Whole-Farm Approach With Forage Crops and Cover Crops



Thursday, Sept. 12
4–6 p.m.

17024 N Ave.
Bouton, IA 50039

HOSTS

Dan & Ila Taylor and Noah,
Sarah & Todd Taylor



RSVPs appreciated at
practicalfarmers.org/field-days

Dan Taylor farms with his family, along with one full-time and two part-time employees, in southwest Iowa growing corn, soybeans and forage crops for their cattle. They also raise 2,400 pigs for Niman Ranch. With 2,300 acres of corn, soy and forage, Dan and his son, Noah, are passionate about finding a third crop for Iowa and have worked to grow and trial both canning and field peas. While Dan and Noah farm separately, they share the livestock 50-50.

Their cattle graze on a cereal rye cover crop in spring, made possible by their efforts to fence row crop acres. This year, they will grow oats for oatlage, following that with millet also for summer forage. Dan values how bringing livestock onto the farm helps the local community by providing jobs on the farm and in local lockers. Join Dan and his family to learn more about how they're integrating row crops and livestock, how they manage their cover crops and how they strive for crop diversity.

SPONSORS

Albert Lea Seed House
Beaver Creek Watershed Management Authority
Heartland Co-op
Home State Bank
Iowa Farmers Union
Niman Ranch

MEAL

A meal will follow the field day.

See & Discuss

- Growing and chopping oatlage and millet following oats
- Cover crop management and seeding methods
- Integrating livestock with row crops and cover crop grazing
- Building and maintaining fencing

Equitable Land Access and Culturally Relevant Vegetable Production at Feed Iowa First's Wanatee Farm



**Friday, Sept. 13
8-11 a.m.**

**6945 Lakeside Rd.
Marion, IA 52302**

**HOST
Feed Iowa First
Wanatee Farm**



**RSVPs appreciated at
practicalfarmers.org/field-days**

Feed Iowa First's Equitable Land Access program connects landless farmers with land, seeds, irrigation and farming equipment. This support reduces their start-up costs to zero. Feed Iowa First also provides emerging farmers with education, business planning support and community-building opportunities. Wanatee Farm, in Marion, Iowa, is Feed Iowa's First newest initiative through the ELA program. The 11-acre farm hosts seven vegetable farmers: Daniel Batige, Mari Hunt Wassink, Siriro Hakizimana, Akola Parou, Guy Ngoma, Kisonia Mufuta and Patience Dahn. Using farming methods most familiar to them, these farmers grow culturally relevant crops like sorrel, eggplant and potatoes.

Join us to hear these farmers' stories, learn about their crops and markets and connect with others interested in land and food access solution in Iowa. Stay after the field day for a workshop at nearby Linn County Public Health Building, where you'll learn how to consolidate your records for tax purposes.

SPONSORS

Beginning Farmer and Rancher Development
Program Project, Department of
Horticulture, Iowa State University
Iowa Environmental Council
Iowa State University Organic Ag Program
Sustainable Iowa Land Trust

MEAL

Lunch will follow the field day, before the tax workshop begins.

FARM INFO

Facebook: Feed Iowa First
Instagram: @feediowa1st
Website: feediowa1st.com

See & Discuss

- Emerging farmer stories
- Growing culturally relevant crops
- Options for marketing and selling vegetable crops
- Consolidating your farm records

Multi-Species Cover Crops + Farmland Owner Legacy Award



**Friday, Sept. 13
4-6 p.m.**

**16525 State Highway C
Elmo, MO 64445**

HOSTS

Tim Kelley and Brent Nold



**RSVPs appreciated at
practicalfarmers.org/field-days**

Tim Kelley is Practical Farmers' 2024 Farmland Owner Legacy Award recipient. This award is granted annually to landowners who help the next generation get started, advance land stewardship and promote long-term sustainability of farm businesses, environmental quality and rural communities.

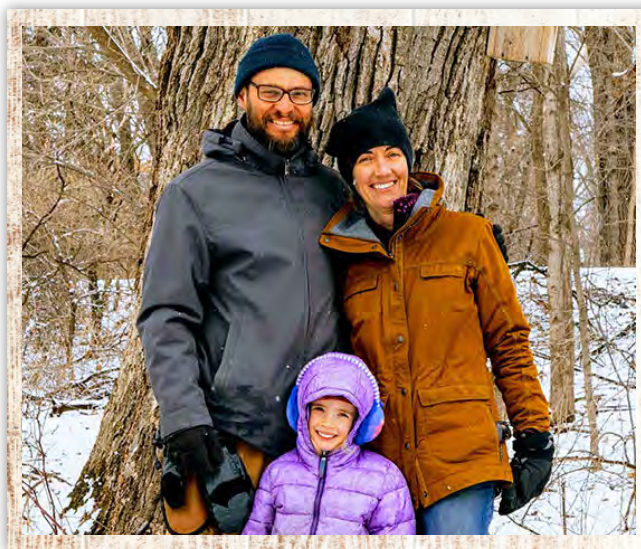
Tim and Brent will discuss their long-range soil health goals and how they intend to achieve them, including through small grains, multi-species cover crops and using less nitrogen. Tim will also briefly discuss his prairie and wetland restoration. During dinner, PFI will present Tim with the award.

Farm walk and discussion from 4-5 p.m.; dinner hosted by PFI and award presentation from 5-6 p.m.

See & Discuss

- Small grains
- Soil health
- Multi-species cover crops
- Farmland owner and tenant partnerships
- Presentation of the 2024 Farmland Owner Legacy Award

Diversifying the Farm by Integrating Pastured Poultry With Tree Fruit and Berries at Solstice Farm + Paha Cider Co.



Sunday, Sept. 15
2–4 p.m.

2392 Hilton Ave.
Waverly, IA 50677

HOST
Mark Westbrook
Solstice Farm | Paha Cider



RSVPs appreciated at
practicalfarmers.org/field-days

There's a lot happening at Mark Westbrook's place. As the farmer at Solstice Farm, Mark raises a range of horticultural crops, including mushrooms, pears, cherries, various berries and around 300 apple trees. As the cidemaker at Paha Cider Co., Mark also processes apples, ferments ciders and packages the beverages for sale. But the things Mark is most excited to share are his pastured poultry and laying hen enterprises and how they fit within his horticultural production.

The seasonal cycle for raising and marketing eggs, broilers and turkeys complements the rest of his operation. For Mark, these enterprises are also viable additions to his cider and produce enterprises. Come see Mark's systems for housing and rotating different types of poultry through his farm's diverse production areas and pick up some tips to try in your own operation.

SPONSORS

Beginning Farmer and Rancher Development
Program Project, Department of
Horticulture, Iowa State University
Canfield Family Farm
Iowa Farmers Union
Savanna Institute
Wheatsfield Cooperative

MEAL

Refreshments will be provided during the field day.

FARM INFO

Facebook: Solstice Farm Iowa | Paha Cider
Instagram: @solsticefarmiowa | @pahacider
Website: solsticefarm.net | pahacider.com

See & Discuss

- Rotationally grazing turkeys, broilers and layers with horticultural crops
- Grazing broilers in contained tractors among an orchard
- Establishing an apple orchard with around 30 varieties for cider and multipurpose use
- Intercropping aronia berries, elderberries and honeyberries with apples, pears and cherries
- A tour of Paha Cider Co.

Developing Infrastructure on a Diversified Farm One Project at a Time at Brun Ko Farm



Friday, Sept. 20
4–6 p.m.

2920 Falcon Ave.
Exira, IA 50076

HOSTS

Emily & Nathan Paulsen
Brun Ko Farm



RSVPs appreciated at
practicalfarmers.org/field-days

Brun Ko Farm is on a roll. In recent years, farmers Emily and Nathan Paulsen have overseen significant development at their operation in southwest Iowa. They've repurposed a hog barn into a packing shed, added a high tunnel to extend their vegetable season and installed additional waterlines to better use their pastures – and they have done so by using diverse funding sources.

This infrastructure also positions the farm for future growth. Among their plans, Emily and Nathan aim to increase their broiler and vegetable production and prepare for GAP certification. With market streams now established through farmers markets, food hubs, the Iowa Food Cooperative and the occasional restaurant, Brun Ko's growth is sustainable and exciting. Join us to learn how they have enhanced their farm's infrastructure to increase their revenue.

SPONSORS

Audubon SWCD
Iowa Farmers Union

MEAL

A potluck will follow the field day. The hosts will provide the main dish; please bring a side or dessert to share.

FARM INFO

Facebook: Brun Ko Farm
Website: brunkofarm.com

See & Discuss

- Investing in infrastructure to plan for future growth
- Adapting an existing building into a packing shed
- Adding a high tunnel for season extension
- On-farm food safety, including GAP readiness
- Using diverse funding sources to grow the farm

Sheep, Dogs and Sheepdogs



**Thursday, Sept. 26
9 a.m.–Noon**

**Premier 1 Experimental Farm
2031 300th St.
Washington, IA 52353**

**HOST
Fiona Harrar**



**RSVPs appreciated at
practicalfarmers.org/field-days**

Fiona Harrar has been farming for the last 25 years with a focus on grass-based ruminant management and meat production. She has worked as a manager on cow and sheep dairies throughout New England, and on small-scale farms producing pastured based lamb, beef, poultry and pork. After realizing she was most passionate about sheep, Fiona decided she wanted more of a challenge on a larger-scale operation.

This desire brought her to southeastern Iowa to become the livestock manager at Premier Experimental Farms, a production farm with 1,000 ewes and 50 meat goats that produces lambs year-round. She also raises and trains border collies and livestock guardian dogs who work with her daily on the farm. Join Fiona at this field day to learn about all things sheep, and the dogs who guard them.

SPONSOR

AgArts

MEAL

Lunch will follow the field day.

See & Discuss

- Livestock guardian dogs for sustainable predator control
- An overview of using herding dogs
- The benefits and techniques of accelerated lambing
- Sheep handling and facilities
- Record-keeping for a flock

Starting Out and Building Up With Pigs, Poultry and Small Grains



Wednesday, Oct. 2
10 a.m.–Noon

7776 15th Ave. Drive
Luzerne, IA 52257

HOSTS

Ryan & Ashley Wallace
Raw Farms



RSVPs appreciated at
practicalfarmers.org/field-days

Ryan and Ashley Wallace moved to their farm in 2023 with their five children and are in the process of building up their infrastructure. With a background in grazing beef cattle, Ryan is focused on developing their farrow-to-finish infrastructure and system. Besides rotational grazing, Ryan farms a range of small grains crops with the goal of making his grain “walk off the farm” in the form of livestock. Come learn how the Wallaces are striving to grow their pig enterprise, which includes both pasture-farrowing and mixed-system pig finishing. Be ready to learn and bring your ideas – Ryan wants feedback on his plans.

SPONSORS

99 Counties
Niman Ranch

MEAL

Lunch will follow the field day.

FARM INFO

Facebook: Raw Farms

Instagram: @rawfarms

Website: rawfarmsia.com

See & Discuss

- Farrowing on pasture
- Mixed-system pig finishing
- Broiler chickens on pasture (as an enterprise for kids)
- Growing small grains for feed
- Using Natural Resources Conservation Service funds for water infrastructure

Establishing Prairie: Selecting Seeds To Restore and Optimize Native Habitat



Saturday, Oct. 26
1-4 p.m.

2024 Hillside Ave.
Mondamin, IA 51557

HOST

Cait Caughey
Mullein Hill Farm



RSVPs appreciated at
practicalfarmers.org/field-days

Cait Caughey is owner and operator of Mullein Hill Farm, a 25-acre farm specializing in flowers, field vegetables and herbs. She has been working to restore portions of the farm back to native upland prairie through careful selection of eco-typical seeds. Lance Brisbois, the deputy director of Golden Hills RC&D, specializes in habitat restoration and outdoor recreation. Come prepared to work as Cait and Lance lead guests on a prairie seed harvest through Cait's established prairie. You'll have the opportunity to pick, clean and sort your own prairie seed to take home.

Sturdy closed-toe shoes, long pants, water, a hat and work gloves are recommended attire. Be prepared to walk up to a half-mile through tall grass and uneven terrain.

SPONSORS

Center for Rural Affairs
Golden Hills RC&D
Iowa Farmers Union
Iowa Natural Heritage Foundation
Women, Food and Agriculture Network (WFAN)

SPEAKER

Lance Brisbois – Golden Hills Resource Conservation & Development

MEAL

Refreshments will follow the field day.

LOCATION NOTES

If you're approaching Mondamin from the south on Interstate 29 north, the best way to avoid all dirt roads is to take Exit 89 (Mondamin exit). Turn right (west) off the exit and go straight through town on state Route 127 for 4.9 miles. Turn left (north) onto Hillside Avenue.

See & Discuss

- Identifying late-season grass and forb species
- Assessing which individual prairie plant specimens are mature for seed harvest
- What to consider in choosing and maintaining a site for restoring your own acreage
- Selecting geographically relevant prairie species based on regional ecotypes
- Cleaning and processing harvested seed
- Post-cleaning seed identification

Balancing Your Farm Dream With Your Family's Needs



Saturday, Nov. 9
9 a.m.–Noon

21388 220th St.
Mount Ayr, IA 50854

HOSTS

Kendra & Kevin Martin
Holdfast Farmstead



RSVPs appreciated at
practicalfarmers.org/field-days

Beginning farmers Kevin and Kendra Martin own and operate Holdfast Farmstead. Prior to farming, they captained ships in the Pacific Northwest. A life at sea equipped them with many skills, like how to manage a crisis when your crew is staring at you or how to exist peacefully in hostile weather. They've applied these skills to their 53-acre farm.

The Martins found meaningful mentorship in other farmers and allowed themselves time to find the right collection of farm enterprises to meet their family's needs and year-round income for the farm. These enterprises, for now, include raising Kiko goat breeding stock, along with freeze-dried and other value-added products. Join the Martins at this field day to learn about their journey to farming and how they're "holding fast" to their farming vision.

MEAL

A meal will follow the field day.

FARM INFO

Facebook: Holdfast Farmstead Iowa
Instagram: @holdfast.farmstead
Website: holdfastfarmstead.com

See & Discuss

- Building year-round income into your business plan
- Marketing strategies, including adding an on-farm store
- Deciding on, and trying out, freeze-dried and other value-added products
- Raising and rotationally grazing Kiko goats
- Building a network of mentors

Acknowledgements

Thank you to the organizations, business and agencies who provide funding for PFI's field day season:

- Builders Initiative
- Cargill
- Cedar Tree Foundation
- Ceres Trust
- PepsiCo
- Roger Ross Gipple on behalf of BeWildReWild and BIG RIVER CONNECTIVITY: bewildrewild.org
- Stranahan Foundation
- Unilever
- Vere Initiatives
- Walmart
- Walmart Foundation
- Walton Family Foundation
- National Fish and Wildlife Foundation and the U.S. Department of Agriculture, under agreement number 2004.22.074823
- National Fish and Wildlife Foundation and the U.S. Department of Agriculture, under agreement number 2007.23.076330
- NRCS CIG through a subaward with Pheasants Forever
- Offices of Partnerships and Public Engagement (OPPE), through a subaward with Center for Rural Affairs.
- USDA SARE, through a subaward with Lincoln University, Missouri, under agreement number LNC23-480
- U.S. Department of Agriculture and National Fish and Wildlife Foundation, under grant ID 2004.22.075401 and agreement number 75401
- U.S. Department of Agriculture's (USDA) Agricultural Marketing Service through grant 23SCBPIA1187
- U.S. Department of Agriculture's (USDA) Agricultural Marketing Service through grant 21FMPPIA1012-00
- U.S. Department of Agriculture, under agreement number NR226114XXXXG004
- U.S. Department of Agriculture, through a subaward with ADM re:generations, under agreement number NR233A750004G053
- U.S. Department of Agriculture, under agreement number NR216114XXXXG003
- Financial support from U.S. EPA under an Assistance Agreement



Any opinions, findings, conclusions, or recommendations expressed in this publication are those of the author(s) and do not necessarily reflect the views of the U.S. Department of Agriculture. In addition, any reference to specific grants or types of products or services does not constitute or imply an endorsement by the U.S. Department of Agriculture for those products or services.

USDA is an equal opportunity provider and employer.

The views and conclusions contained in this document are those of the authors and should not be interpreted as representing the opinions or policies of the U.S. Government or the National Fish and Wildlife Foundation and its funding sources. Mention of trade names or commercial products does not constitute their endorsement by the U.S. Government, or the National Fish and Wildlife Foundation or its funding sources.

BECOME A MEMBER TODAY!

PFI MEMBERSHIP

Our inclusive organization represents a diversity of farmers, friends of farmers and farmland owners who guide PFI's priorities and lead our programming. Farmers in our network represent a range of experience levels and production practices, raising corn, soybeans, livestock, fruits and vegetables, hay, small grains and more.

We invite you to join our expanding network and take part in an open exchange of practical information to improve our farms and communities.

Membership Level	Membership For	Annual Fee
Access	Individuals who are current students, retired or beginning farmers, others on fixed or limited incomes and those who want to try us out	\$25
Individual	Individuals	\$50
Farm / Household	All members of farm families and any farm employees	\$60
Organization	Non-farming businesses, agencies and departments; benefits cover up to three employees	\$110
Lifetime	Individuals or families who would like to make a lifetime commitment <i>*terminates with the primary members; excludes businesses</i>	\$1,200

MEMBER BENEFITS

- A subscription to our quarterly **magazine**, the Practical Farmer, full of inspiring stories, on-farm research results, innovative projects, member profiles and more
- Invitations to 100+ (virtual and on-farm) **events** annually, with steep discounts to our annual conference and other events
- Eligibility to participate in our members-only **email discussion groups** to share ideas, resources and tools with one-another. Discussion groups include Announcements, Field Crops, Horticulture, Livestock and Perspectives
- Eligibility to participate in our **Cooperators' Program** and to design and conduct on-farm research projects exploring questions you want to answer for your farm
- Eligibility to participate in **Labor4Learning**, our program for aspiring farmers, and our **Savings Incentive Program** for beginning farmers
- Opportunities to **serve as a farmer leader**, with stipends for sharing your knowledge as an event host, speaker or mentor
- The ability for your farm to be listed in our public **Local Foods Directory**, or your organization to be listed in our **Business Directory**, which can help you find new customers and markets for your products
- The chance to become part of a network of people who share our vision for healthy soil, healthy food, clean air, clean water, resilient farms and vibrant communities – and to help guide the focus of our farmer-led organization

▶ INTERESTED?

Visit practicalfarmers.org/join-or-renew or fill out the following page and send it to our office.

GROW YOUR FARM WITH PRACTICAL FARMERS. JOIN OR RENEW TODAY!

Want to join or renew online? Visit practicalfarmers.org/join-or-renew.

MEMBER INFORMATION

Contact Name(s)*: _____

Farm or Organization Name: _____

Address: _____

City: _____ State: _____ ZIP: _____ County: _____

Phone: _____ Email: _____

* For Farm or Household membership, please list names of all persons included. For Organization membership, you may list up to three contact persons.

JOIN OR RENEW

1. I am joining at the level of:

- Access – \$25
 Individual – \$50
 Farm or Household – \$60
- Organization – \$110
 Lifetime Member* – \$1,200
* See details at bit.ly/PFI-lifetime

3. How many years of farming experience do you have?

- 0
 1–5
 6–10
 11 or more

2. Which category best describes you? (choose one)

- Farmer or farm operator
 Not farming yet, but would like to
- Farmland owner who does not actively farm myself
 Other: _____

4. How did you hear about PFI?

MEMBER BENEFITS

When you join our email discussion groups, you can network, build community and exchange ideas from anywhere, at any time. Sign up for as many groups as you'd like (and be sure to include your email address above)!

- Announcements
 Perspectives
 Field Crops
 Horticulture
 Livestock

Please add my farm to PFI's:

- Local Foods Directory
 Business Directory (Organization members only)

SUSTAIN PRACTICAL FARMERS WITH AN ADDITIONAL DONATION

For the sake of the long-term health and vitality of Practical Farmers of Iowa, we ask you to consider making a donation above and beyond your membership fee. Practical Farmers of Iowa is a 501(c)3 organization. Your gift is tax deductible to the extent allowed by law.

I would like to make a one-time, tax-deductible donation to PFI in the amount of:

- \$1,000
 \$500
 \$250
 \$100
 \$50
 \$ _____

Or, make a recurring monthly or quarterly donation. This will be automatically charged to your credit card on the first day of each month or quarter.

- Yes, I would like to give \$ _____
 per month OR per quarter

PAYMENT

Membership Level\$ _____ per year for _____ year(s) = \$ _____

Additional Donation = \$ _____

TOTAL AMOUNT = \$ _____

- Check or money order is enclosed (Please make payable to "Practical Farmers of Iowa.")
 Credit card (Visa, MasterCard or Discover only)

Name on card _____ Number _____

Exp. Date _____ CVC# (3 digits) _____ Please automatically charge this credit card annually for membership



Field day attendees examine a rye crop at A&W Farms, managed by Caleb Akin and Noah Wendt, near Cambridge, Iowa on June 13, 2023.

PRACTICAL FARMERS *of Iowa*

1615 Golden Aspen Drive, Suite 401
Ames, IA 50010

