

Year-round Grazing in the Midwest: BUILDING A FORAGE CHAIN



Why??

Reduce labor and feed costs

Save fuel and machinery costs

Improve herd health and animal welfare

Utilize and manage crop residues and cover crops.

Improve fertility

Eliminate manure and fertilizer application

INCREASE PROFITABILITY

Key Ingredients

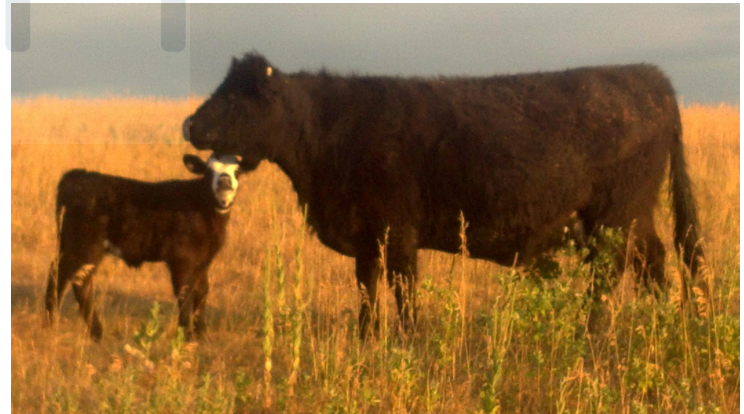
- 1) Right Genetics
- 2) Adequate infrastructure. Fences, water, etc.
- 3) AMP (Adaptive Multi Paddock) grazing system
- 4) Diversity and flexibility with forage options
- 5) Management experience with crops & livestock
- 6) Seasonal grazing plans
- 7) Flexibility regarding stocking rates
- 8) Irrigation
- 9) Cooperation from Mother Nature



Forage
Hay
Mineral
Water



No grain
No feed trucks
No lick tubs
No commercial
feeds

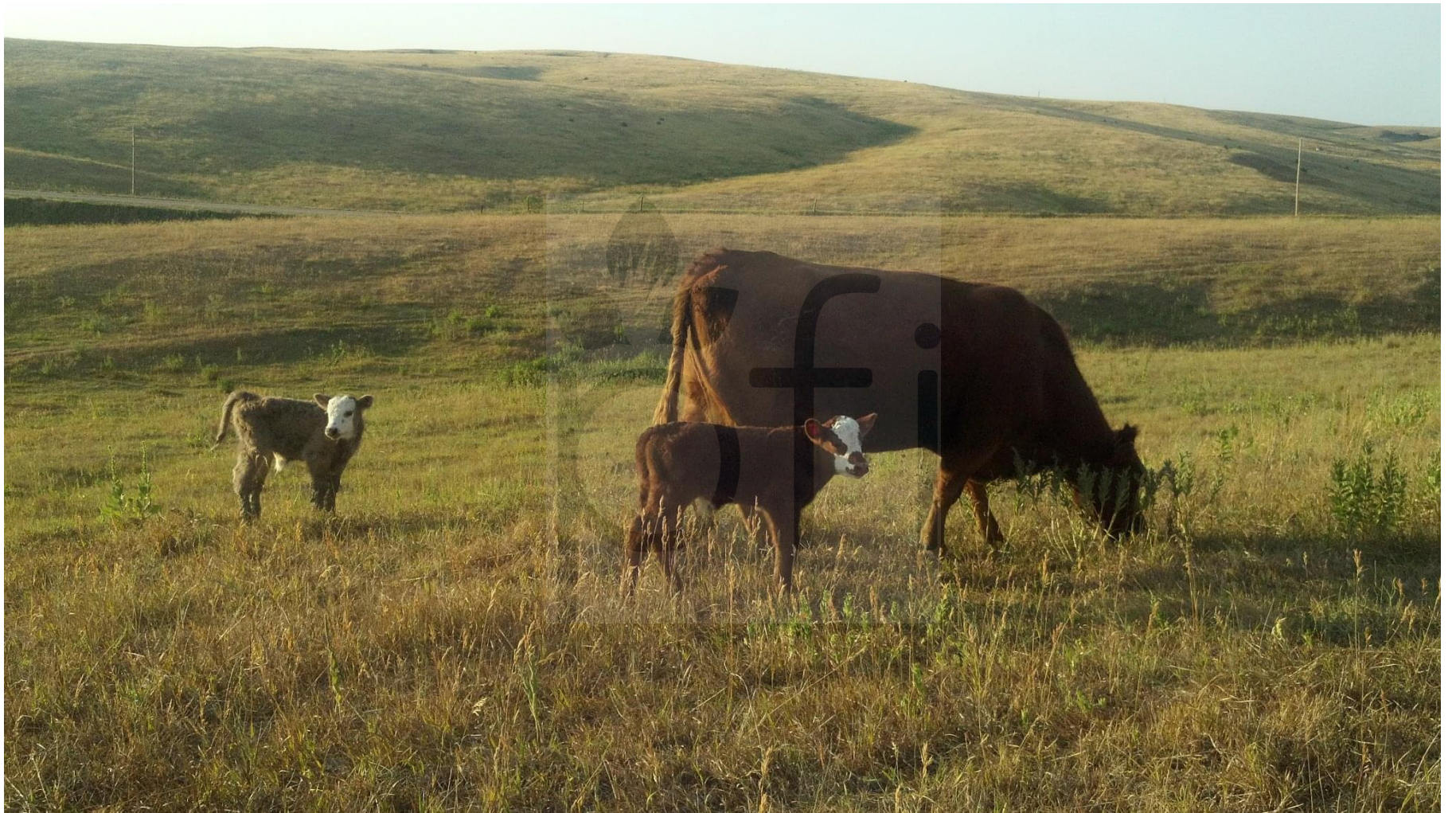






















Infrastructure for AMP GRAZING:

- 1) 50 permanent year-round watering sites on 800 acres that supply 2-4 paddocks each.
- 2) 15 miles of permanent fencing.
- 3) Unlimited options for temporary fencing.
- 4) Natural shelter in numerous locations

160 acres. 16 watering sites. 4 paddocks for each.







Diversity gives you Flexibility:

- 1) May need to adjust livestock numbers throughout the season.
- 2) Adjust for drought conditions.
- 3) Adjust for dormant season.
- 4) Flexibility in marketing strategies.
- 5) Conditions are different every year.
- 6) Need a flexible grazing plan.
- 7) A rigid grazing plan is the worst thing you can do.

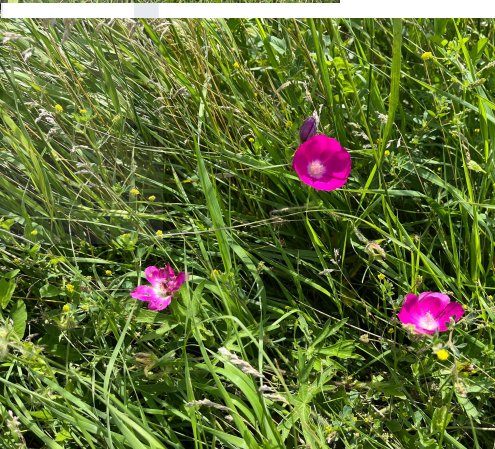
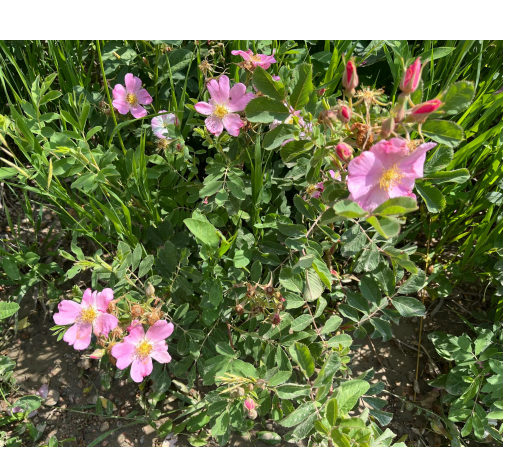
Strategies to Achieve Diversity & Flexibility

- 1) Combination of custom grazing and livestock ownership.
- 2) Graze various classes of livestock.
- 3) Forage chain consisting of annuals, perennials, warm season, cool season, grasses, legumes, brassicas, forbs, small grains, millet, sorghum/sedan, etc.
- 4) Stockpiling forages.
- 5) Grazing crop residues and cover crops.
- 6) Double cropping with annuals.
- 7) Extensive watering system and fencing.
- 8) BONUS: Irrigation: the unfair advantage
- 9) BONUS: Contiguous land base.
- 10) Backup plan: hay available. Sell or send cattle back home



View from my front yard: virgin prairie as far as I can see. 150+ species of plants.





Native Grassland







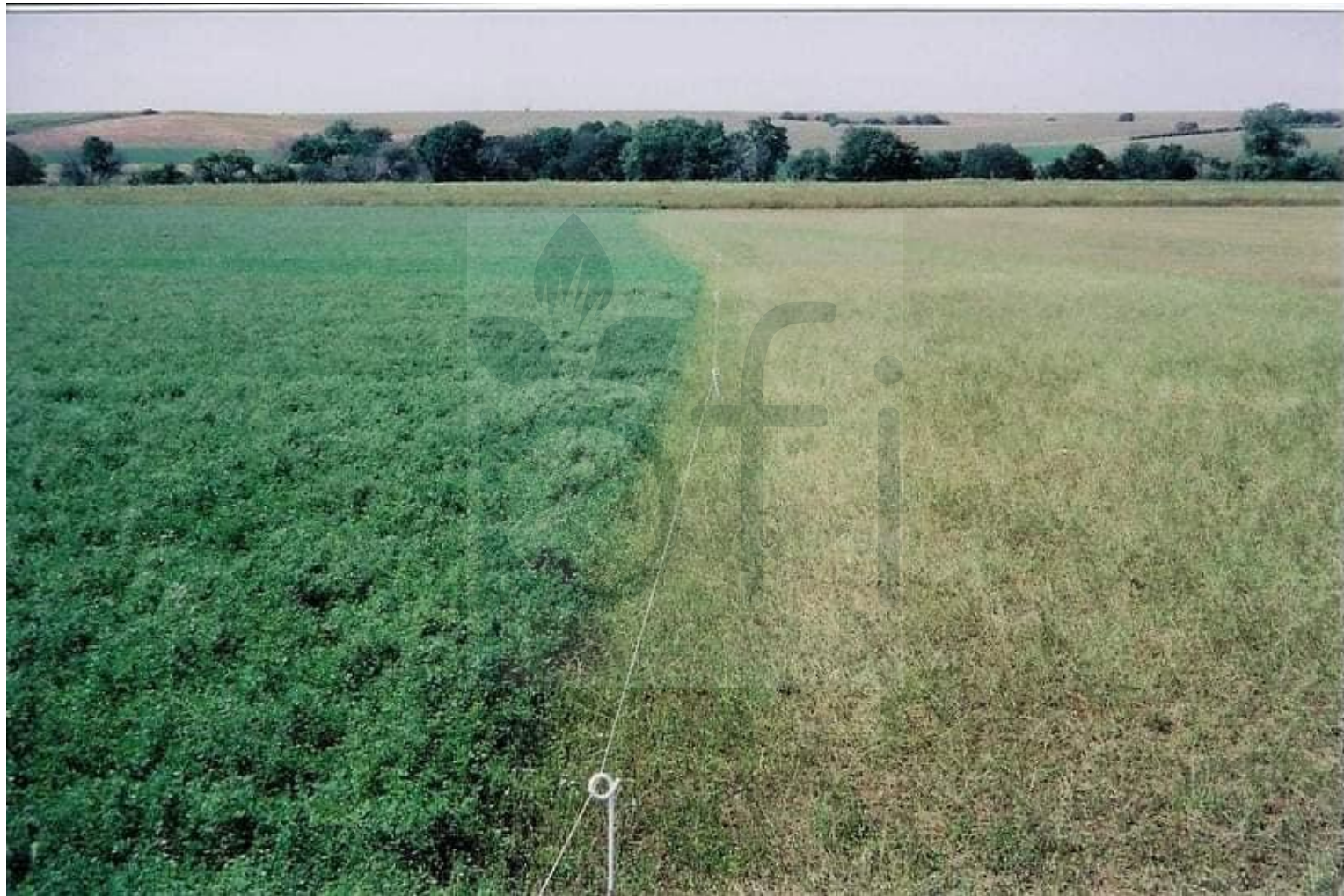
Stockpiling native perennial grass.





Irrigated cool season grass legume mix. 10 species













Stock density = one million pounds/acre





