



GREEN
ACRES
MILLING

































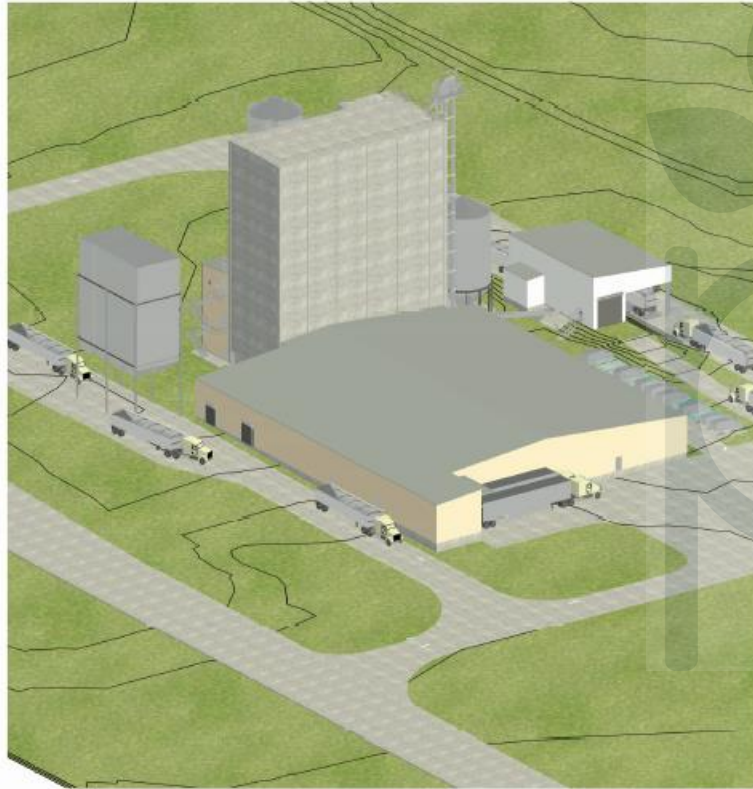




OAT PROCESSING FACILITY FACILITY

- FOR -

GREEN ACRES MILLING



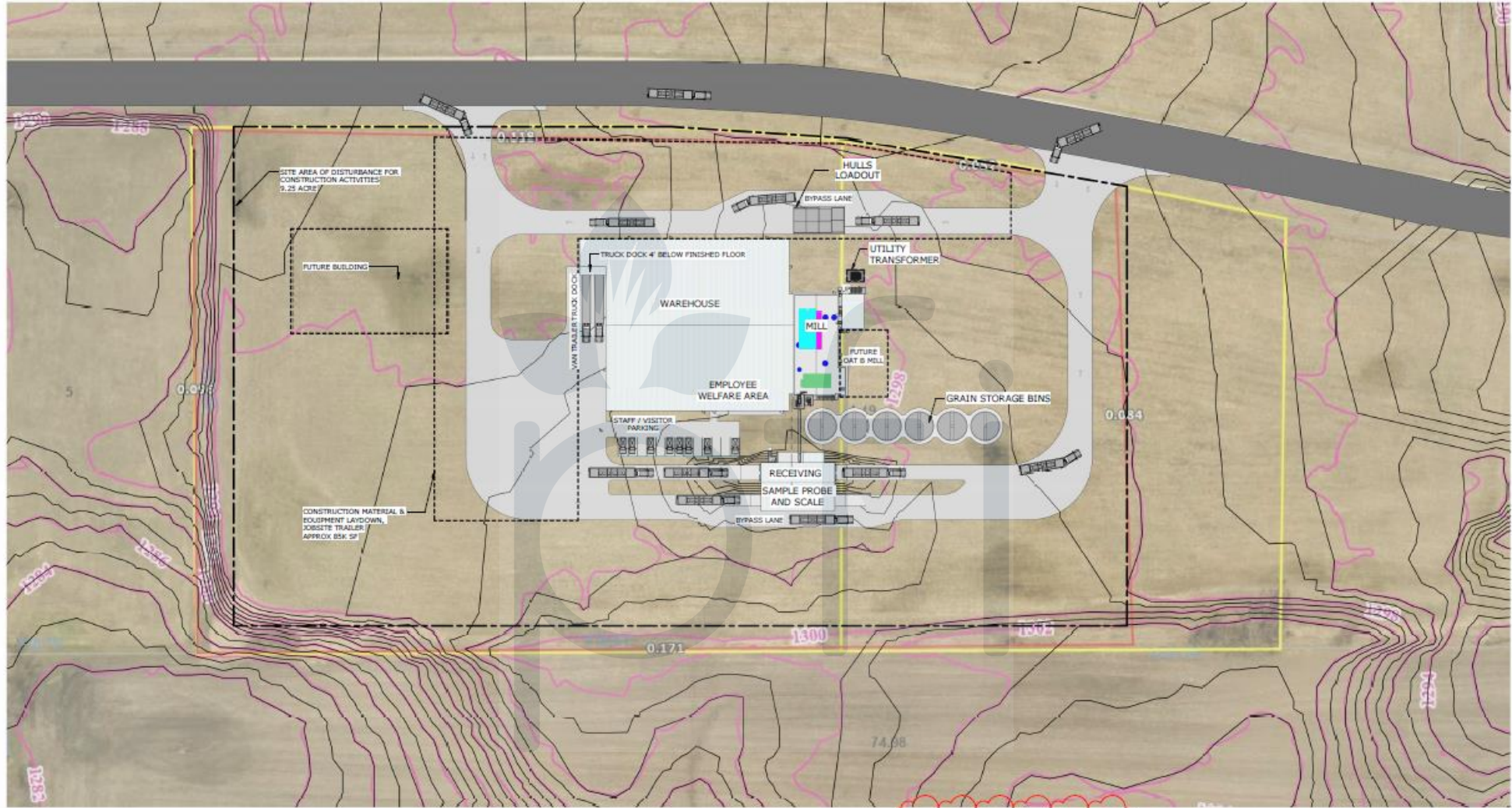
1
E000 VIEW FROM NORTHWEST



2
E000 VIEW FROM SOUTHEAST

CONTRACT DRAWING INDEX		
#	REV	DRAWING TITLE
E000	C	TITLE SHEET
E001	B	FLOW DIAGRAM
E002	G	SITE PLAN
E003	D	GENERAL PLAN
E004	B	GENERAL ELEVATIONS
E101	B	RECEIVING PLANS
E111	B	RECEIVING SECTIONS
E112	B	RECEIVING SECTIONS
E121	C	STORAGE - RECLAIM & ROOF PLANS
E132	C	STORAGE - SECTION N/S
E133	B	STORAGE - SECTION E/W
E141	C	MILL - 1ST & 2ND LEVEL PLANS
E142	C	MILL - 3RD & 4TH LEVEL PLANS
E143	C	MILL - 5TH & 6TH LEVEL PLANS
E144	C	MILL - 7TH LEVEL & ROOF PLANS
E151	C	MILL - SECTIONS CC, CB & CA
E152	C	MILL - SECTIONS CP & CP
E153	C	MILL - SECTION C2
E154	C	MILL - SECTION C3
E155	C	MILL - SECTION C4
E161	B	WAREHOUSE PLAN
E201	B	WAREHOUSE SECTIONS
E221	B	HULL LOADOUT PLANS AND SECTIONS
E231	B	SE STAIR PLANS
E232	A	SE STAIR PLANS
E233	A	SE STAIR AND SECTIONS
TOTAL SHEETS: 28		

<p style="color: red; font-weight: bold;">Progress Print</p> <p style="color: red; font-weight: bold;">NOT FOR CONSTRUCTION</p> <p style="color: red; font-weight: bold;">2024.10.16</p>	No.	Revisions	Date	By	Checked By	<p>SCALED FOR SHEET SIZE</p> <p>ANSI D (22" x 34")</p> <p style="font-size: small;">REPRODUCED AND REVISIONS: DO NOT REPRODUCE, TRANSMIT, OR DISCLOSE THIS INFORMATION WITHOUT WRITTEN CONSENT OF TODD & SARGENT, INC. © 2024</p>	<p style="font-size: x-small;">2405 DE 5TH ST. # AMED, LA 50010 T 515.232.5442</p>	<p>OAT PROCESSING FACILITY</p> <p style="font-size: x-small;">- FOR - GREEN ACRES MILLING ALBERT LEA, MINNESOTA</p>	Drawing Title TITLE SHEET		
	A	ISSUE FOR REVIEW	7/22/24	WSP					Project No.	Drawing No.	Rev. No.
	B	ISSUE FOR REVIEW	7/24/24	WSP					123005	E000	C
C	PRELIMINARY ISSUE	10/16/24	WSP								



N
 1 SITE PLAN
 E002 1" = 50'-0"

PRELIMINARY ELEVATIONS TO BE CONFIRMED

- MAIN SLAB OF MILL & WAREHOUSE BUILDINGS
 1. 100'-0" = 1300'
- RECEIVING TOP OF PIT
 1. 104'-0" = 1304'
- WAREHOUSE TRUCK DOCK EXTERIOR
 1. 096'-0" = 1296'

Progress Print
NOT FOR CONSTRUCTION
 20241016

No.	Revisions	Date	By	Reviewed By
B	ISSUE FOR REVIEW	7/27/24	WSP	
C	ISSUE FOR REVIEW	7/24/24	WSP	
D	PRELIMINARY ISSUE - SITE PLAN	8/16/24	KCB	
E	PRELIMINARY ISSUE - SITE PLAN	8/21/24	KCB	
F	PRELIMINARY ISSUE - SITE PLAN	08/26/24	KCB	
G	PRELIMINARY ISSUE - SITE PLAN	10/16/24	WSP	

SCALED FOR SHEET SIZE
 ANSI D (22" x 34")

REPRODUCTION AND TRANSMISSION OF THIS INFORMATION WITHOUT WRITTEN CONSENT OF TODD & SARGENT, INC. IS PROHIBITED.




2065 125TH ST # 1000, IA 50013 | 515.202.0442

OAT PROCESSING FACILITY
 - FOR -
 GREEN ACRES MILLING
 ALBERT LEA, MINNESOTA

Drawing Title		SITE PLAN	
Project No.	Drawing No.	Rev. No.	
123005	E002	G	



Landon Plagge, Founder
landon@greenacresmilling.com

Green Acres Milling  
www.greenacresseedco.com