

Vegetable Packshed Design for \$6,000



Carly McAndrews
trowelanderrorfarm@gmail.com

Pack shed uses

- Shade / break
 - Storage
 - Bin washing
 - Organization hub
-
- Produce cool down
 - Quality control
 - Food safety

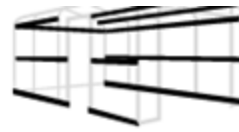


Constraints

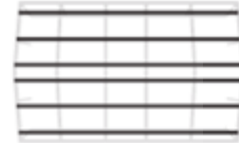
- \$6,000 budget
- Rented land
 - Cannot pour a foundation / heat a building - 3 season structure only



versatube



With Side Hat Channel
(Girts)



With Roof Hat Channel
(Purlins)

FRAME SPECS






WIDTH
10'

LENGTH
18'2"

HEIGHT
(SIDEWALL)
8'

This structure is engineered to meet or exceed your local building code requirements of:

 25lbs GROUND SNOW LOAD *	 20lbs ROOF SNOW (LIVE) LOAD *	 90MPH WIND LOAD *
---	--	---

* Source: IBC 2009 for Cedar Rapids, Iowa 52405 in Linn

Item	Cost	Source
Structure	\$3,950.00	versatube
Supplies to build tables	\$373.00	hardware store
Tubs / sinks	\$242.00	hardware store
Drainage supplies	\$143.00	hardware store
Rocks (for packshed floor)	\$65.00	river products company
Hardware	\$132.00	hardware store
Shelving	\$50.00	restore
Garage doors	\$500.00	hardware store
Misc	\$149.00	
Salad spinner build	\$808.00	see uvm extension article
Total	\$6,412.00	

Key elements

- Drainage
- Flow of produce into → out of pack shed
- Storage

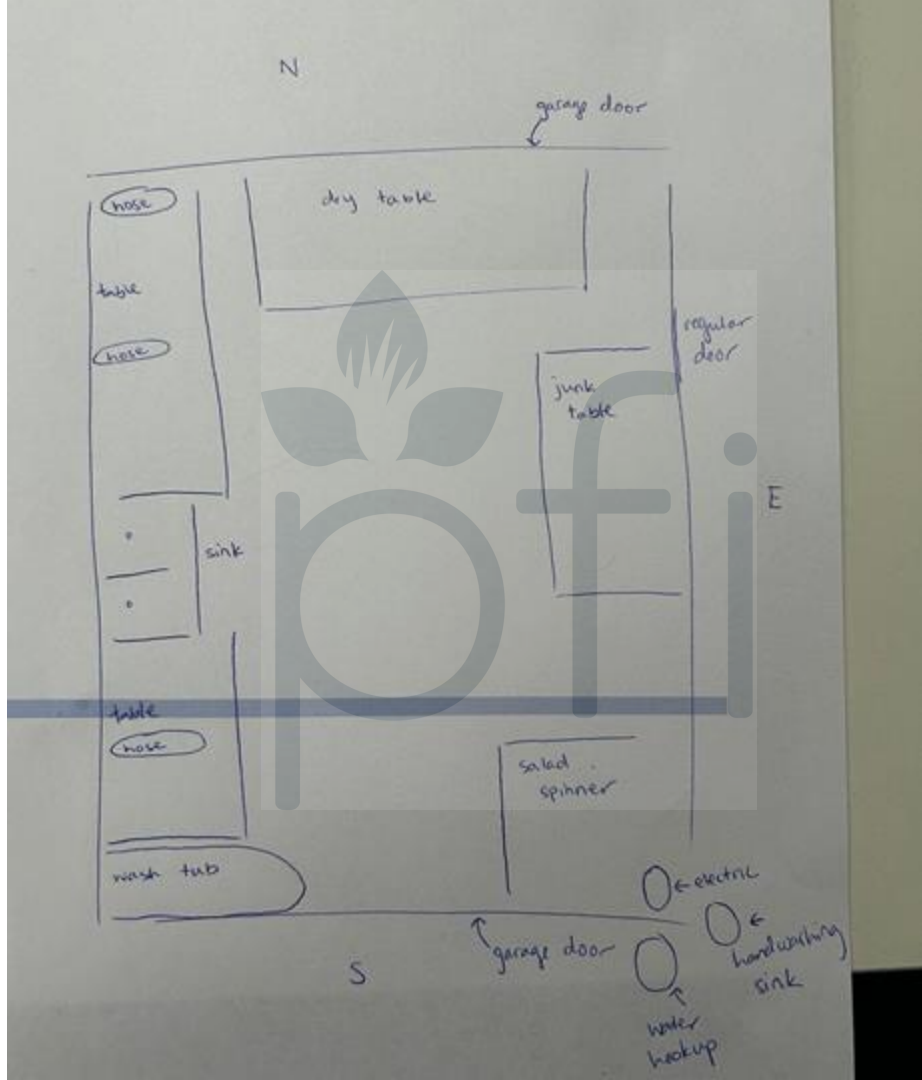


Drainage



Flow of produce

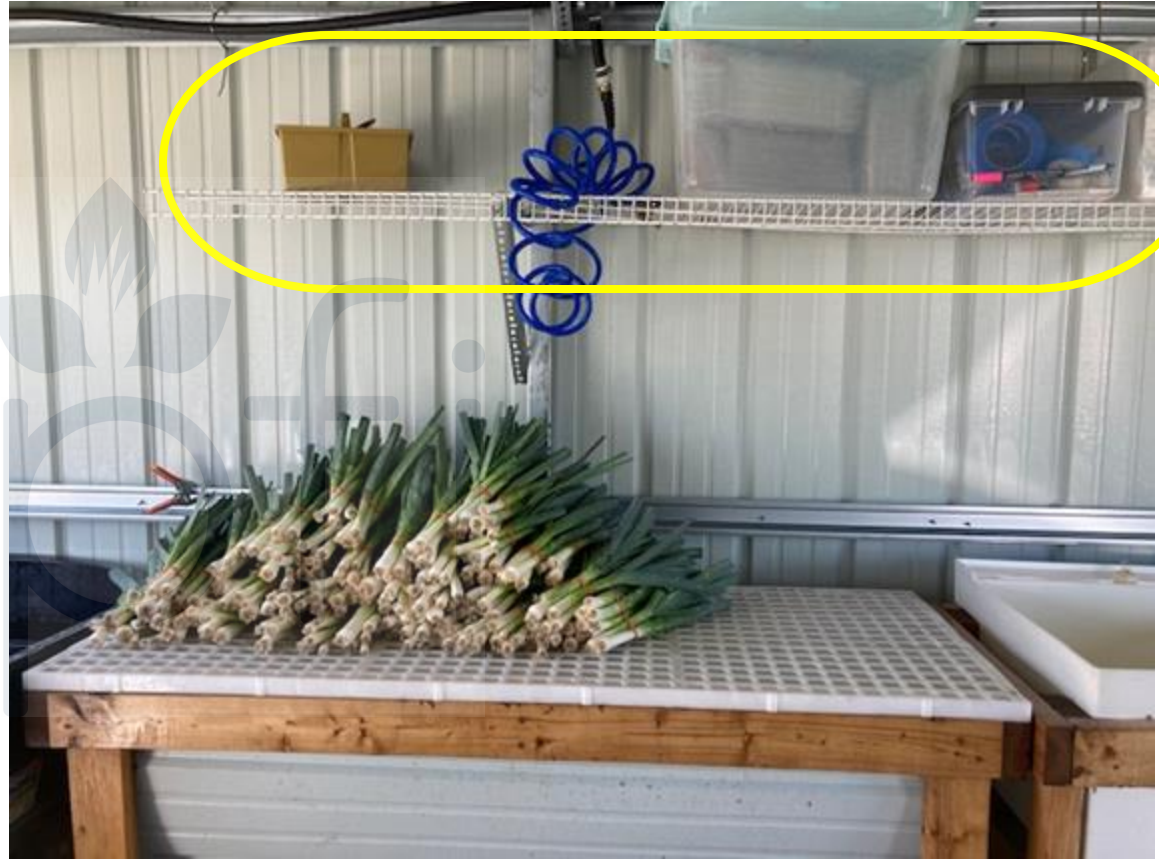
roots + greens





Storage

- Clear bins to find what you need quickly
- Vertical storage helps keep the space clutter-free
- 4 walls makes sure this space is theft-proof and wind proof



Can't do without...



Brass nozzle for spraying off roots + filling tubs, \$20 nolts produce supply



Outdoor hand washing sink, \$50 amazon



Coil hose, \$20, amazon



Easy to clean tabletop grate, \$20 each, QC supply



100 gallon wash tub, \$100 theisen's



Salad spinner build, UVM extension guide, \$800

Thank you!

