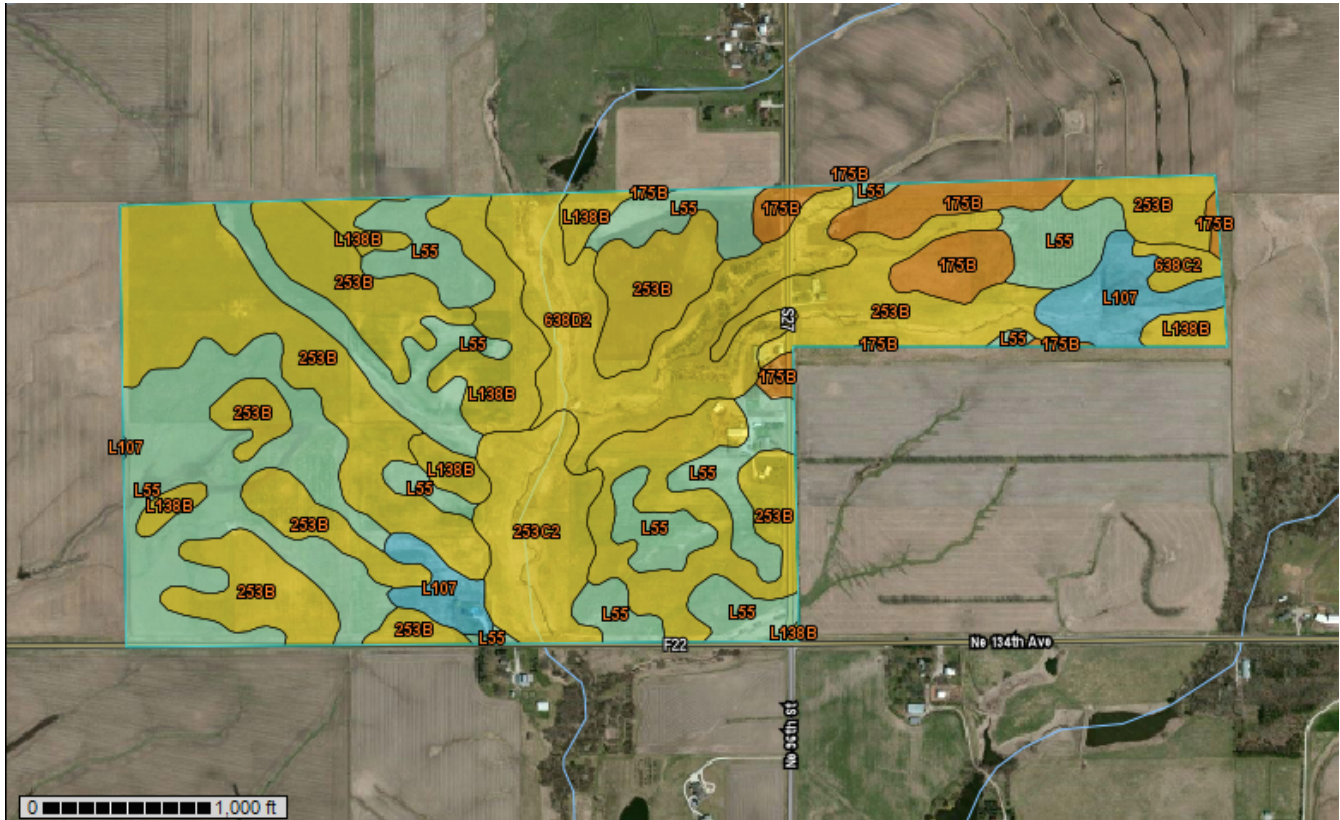


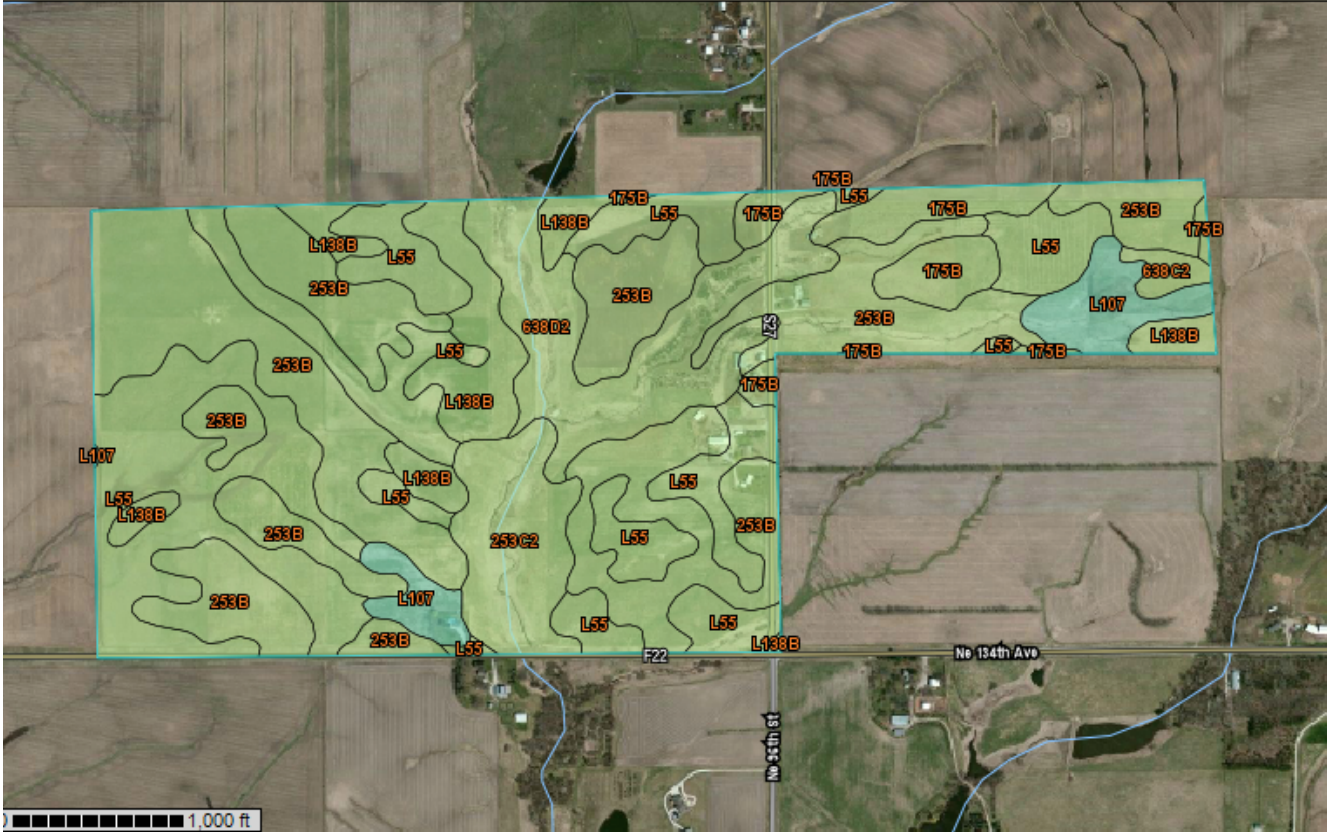
Carney Family Farms - Soil Map Drainage Class



| Tables — Drainage Class — Summary By Map Unit | | | | |
|---|--|------------------------------|--------------|----------------|
| Summary by Map Unit — Polk County, Iowa (IA153) | | | | |
| Map unit symbol | Map unit name | Rating | Acres in AOI | Percent of AOI |
| 175B | Dickinson fine sandy loam, 2 to 5 percent slopes | Somewhat excessively drained | 15.6 | 5.2% |
| 253B | Farrar fine sandy loam, 2 to 5 percent slopes | Well drained | 115.8 | 38.3% |
| 253C2 | Farrar fine sandy loam, 5 to 9 percent slopes, moderately eroded | Well drained | 17.8 | 5.9% |
| 638C2 | Clarion-Storden complex, 5 to 9 percent slopes, moderately eroded | Well drained | 2.3 | 0.7% |
| 638D2 | Clarion-Storden complex, 9 to 14 percent slopes, moderately eroded | Well drained | 30.3 | 10.0% |
| L55 | Nicollet loam, 1 to 3 percent slopes | Somewhat poorly drained | 85.5 | 28.3% |
| L107 | Webster clay loam, Bemis moraine, 0 to 2 percent slopes | Poorly drained | 13.1 | 4.3% |
| L138B | Clarion loam, Bemis moraine, 2 to 6 percent slopes | Well drained | 22.0 | 7.3% |
| Totals for Area of Interest | | | 302.2 | 100.0% |



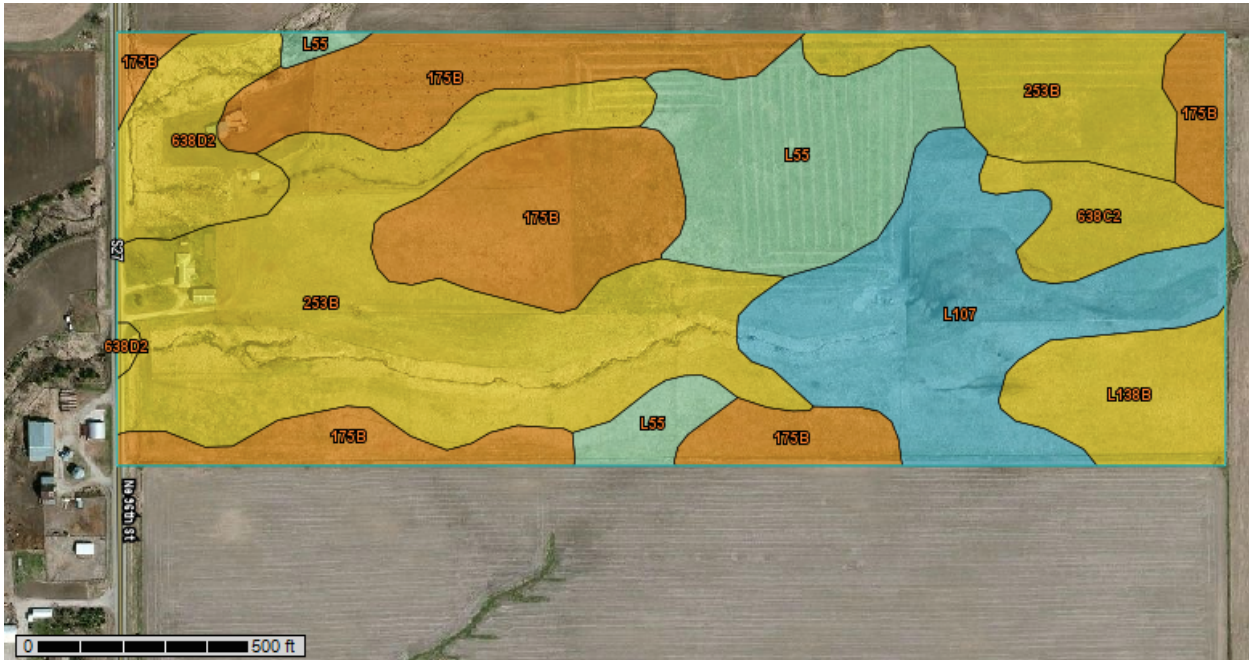
Carney Family Farms - Soil Map “ph rating”



Tables — pH (1 to 1 Water) — Summary By Map Unit

| Summary by Map Unit — Polk County, Iowa (IA153) | | | | |
|---|--|--------|--------------|----------------|
| Map unit symbol | Map unit name | Rating | Acres in AOI | Percent of AOI |
| 175B | Dickinson fine sandy loam, 2 to 5 percent slopes | 6.3 | 15.6 | 5.2% |
| 253B | Farrar fine sandy loam, 2 to 5 percent slopes | 6.5 | 115.8 | 38.3% |
| 253C2 | Farrar fine sandy loam, 5 to 9 percent slopes, moderately eroded | 6.4 | 17.8 | 5.9% |
| 638C2 | Clarion-Storden complex, 5 to 9 percent slopes, moderately eroded | 6.5 | 2.3 | 0.7% |
| 638D2 | Clarion-Storden complex, 9 to 14 percent slopes, moderately eroded | 6.5 | 30.3 | 10.0% |
| L55 | Nicollet loam, 1 to 3 percent slopes | 6.2 | 85.5 | 28.3% |
| L107 | Webster clay loam, Bemis moraine, 0 to 2 percent slopes | 6.6 | 13.1 | 4.3% |
| L138B | Clarion loam, Bemis moraine, 2 to 6 percent slopes | 6.2 | 22.0 | 7.3% |
| Totals for Area of Interest | | | 302.2 | 100.0% |

Carney Family Farms - Soil Map (East Parcel)



Summary by Map Unit – Polk County, Iowa (IA153)

| Map unit symbol | Map unit name | Rating | Acres in AOI |
|------------------------------------|--|------------------------------|--------------|
| 175B | Dickinson fine sandy loam, 2 to 5 percent slopes | Somewhat excessively drained | 15.2 |
| 253B | Farrar fine sandy loam, 2 to 5 percent slopes | Well drained | 20.5 |
| 638C2 | Clarion-Storden complex, 5 to 9 percent slopes, moderately eroded | Well drained | 2.3 |
| 638D2 | Clarion-Storden complex, 9 to 14 percent slopes, moderately eroded | Well drained | 3.4 |
| L55 | Nicollet loam, 1 to 3 percent slopes | Somewhat poorly drained | 7.9 |
| L107 | Webster clay loam, Bemis moraine, 0 to 2 percent slopes | Poorly drained | 9.7 |
| L138B | Clarion loam, Bemis moraine, 2 to 6 percent slopes | Well drained | 3.4 |
| Totals for Area of Interest | | | 62.3 |

Carney Family Farms - Soil Map Drainage Class with Topographic Map (East Parcel)



NOTE: 10 feet of elevation change occurs between each line. Thicker line in the center of the map is 950 feet of elevation. Upper right corner of parcel is at approximately 995 feet above sea level. The lowest elevation of the parcel is approximately 910 feet above sea level at the road on the west side in the center of the parcel.

Topographic map accessed at the Iowa Geographic Map Server - Iowa State University Geographic Information Systems Support and Research Facility www.ortho.gis.iastate.edu/

Soil map accessed at the USDA online Web Soil Survey websoilsurvey.sc.egov.usda.gov