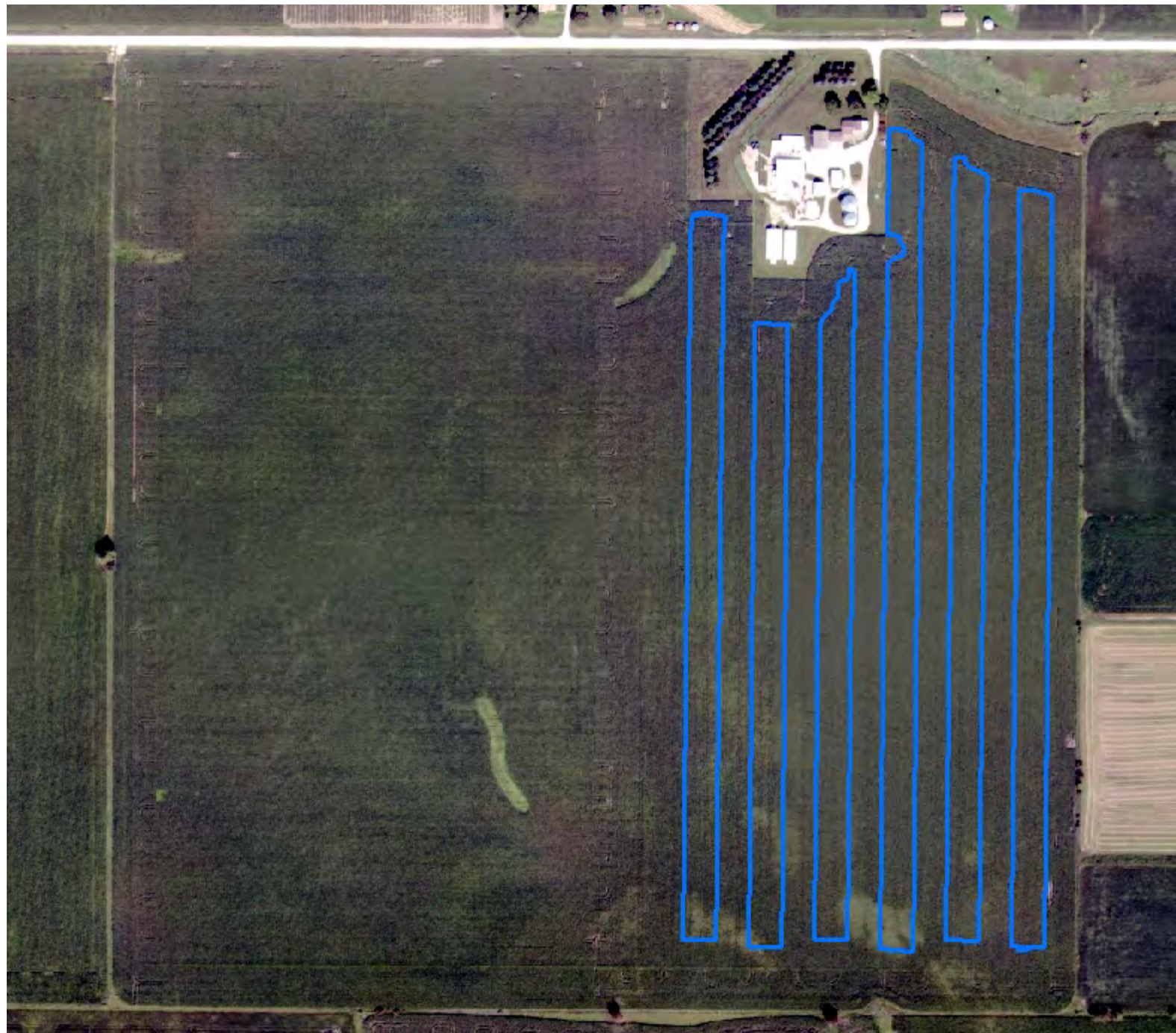




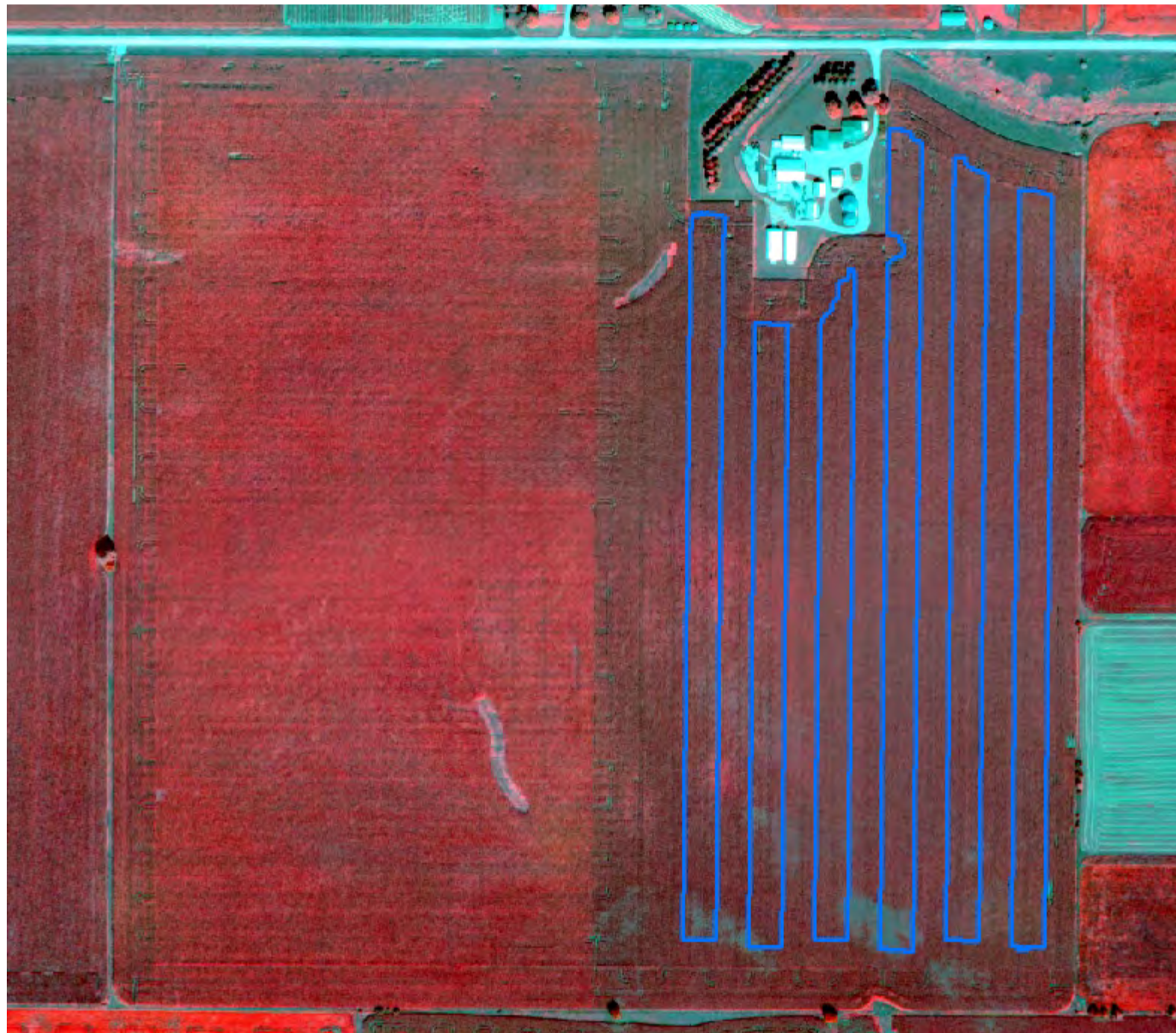
Fall Strip-till into fall drilled cereal rye. I decided to compare early termination (4/28) vs. late termination (5/4). Planted on 5/5 to P0589 at 34k. 3 gal of 8-24-0 starter as pop up was used. 10.5 gal 32% UAN plus 1.5 gal of 12-0-0-26S was used as a carrier for my preemergence herbicide on 5/12. 110# N as 32% was sidedressed in early June. Data and report slides were analyzed and prepared by the On-Farm Network in this preliminary report. A final report from the On-Farm Network with soils and weather data will follow later. This field has a long term history of no-till/strip-till and 4 year history of cover crops.



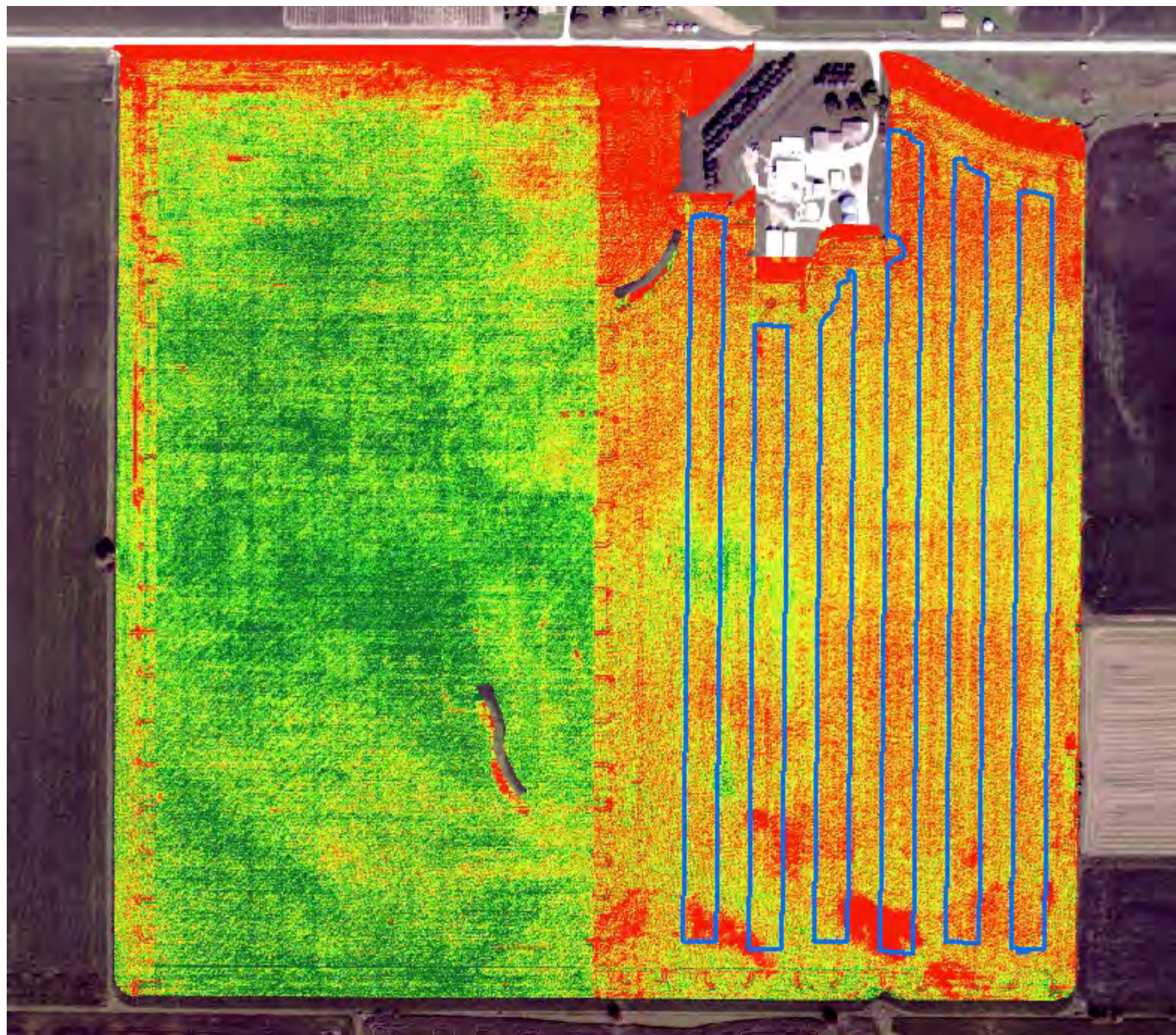
Natural Color with
Late Termination
outline



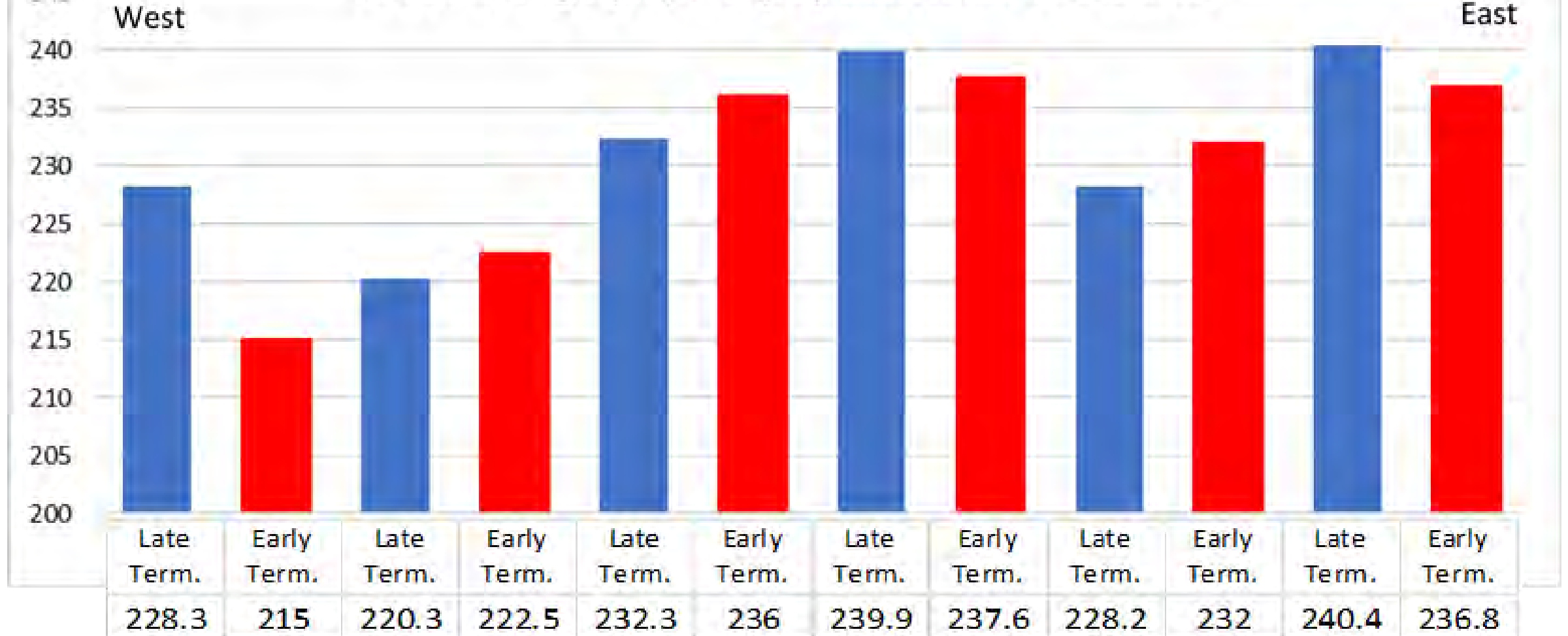
NIR with
Late Termination
outline

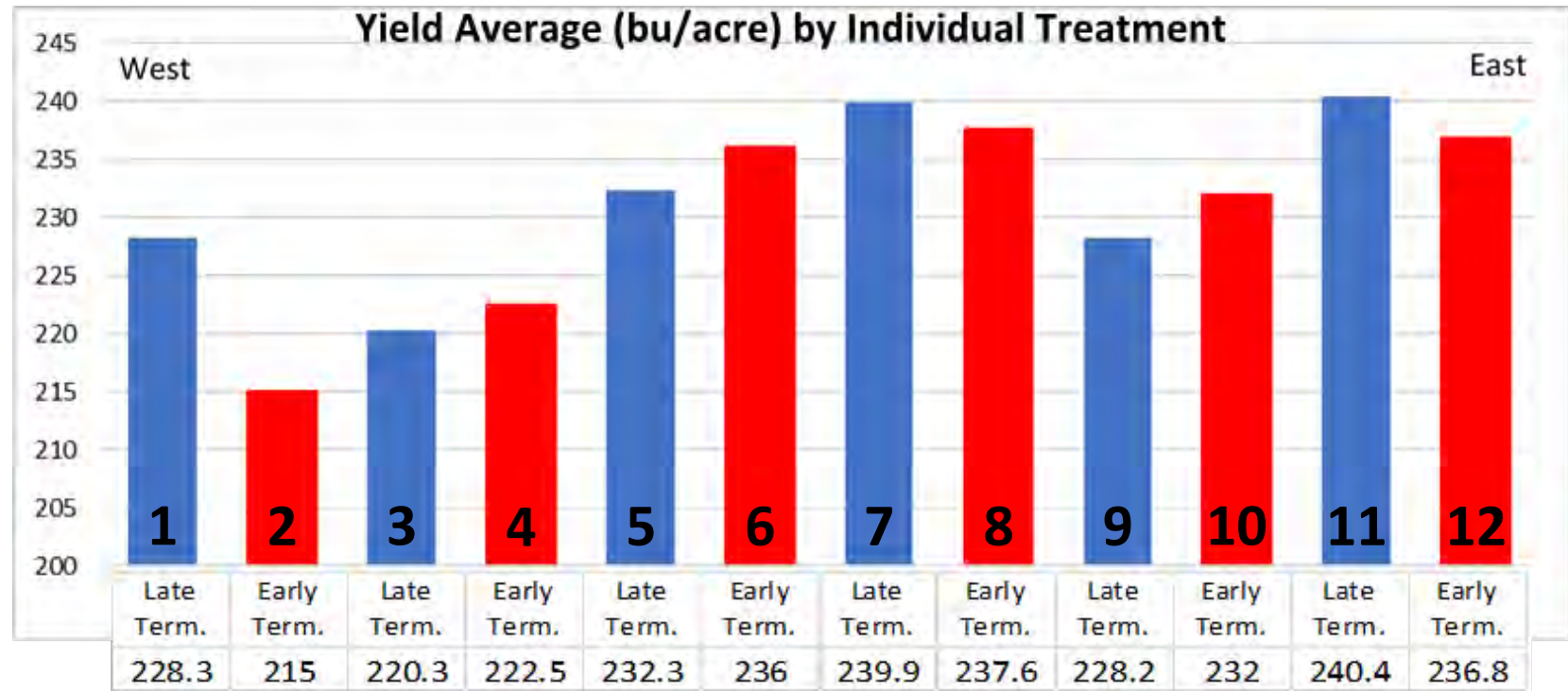
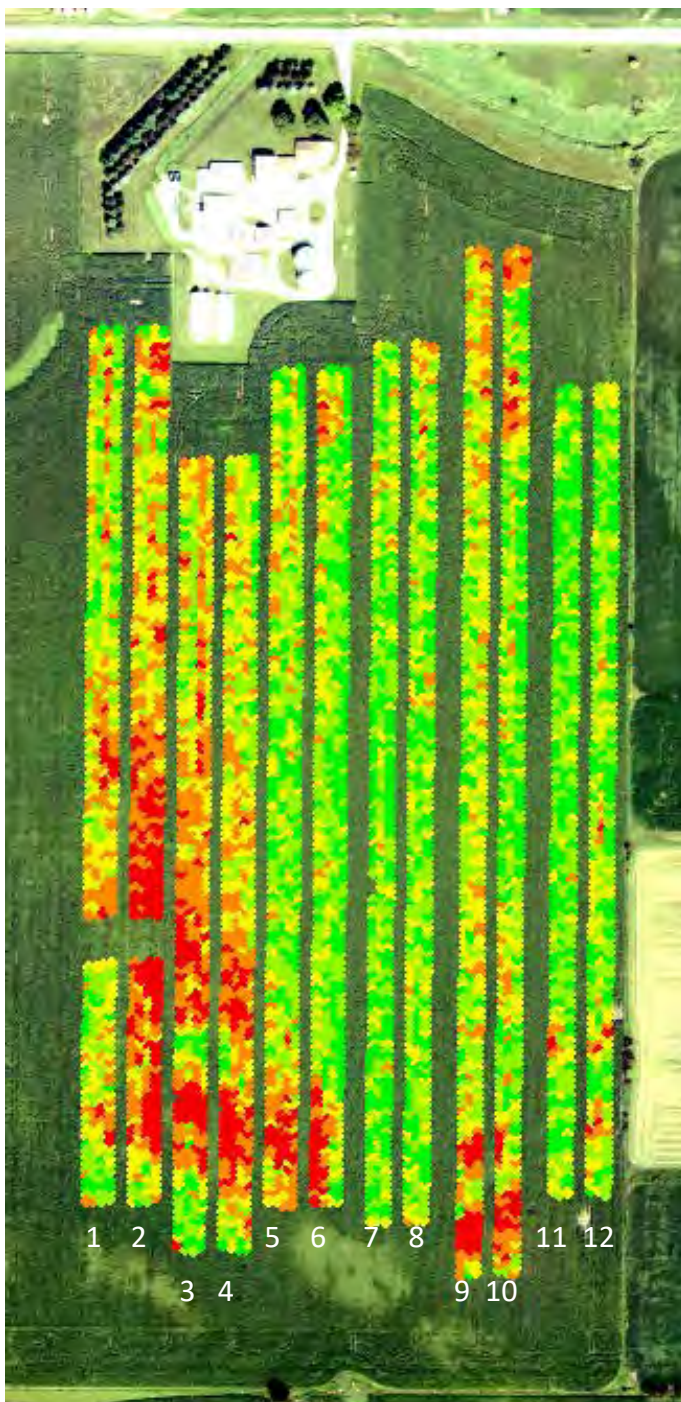


NDVI with
Late Termination
outline



Yield Average (bu/acre) by Individual Treatment





Yield Average for all Individual Treatments (bu/acre)	
Late Termination	231.6
Early Termination	230

A randomized test suggest no evidence of significant yield difference